

Bâtiment HYBRIDE

SUR L'ÎLE D'ODAIBA
UNE ÎLE ARTIFICIELLE DANS LA BAIE DE TOKYO



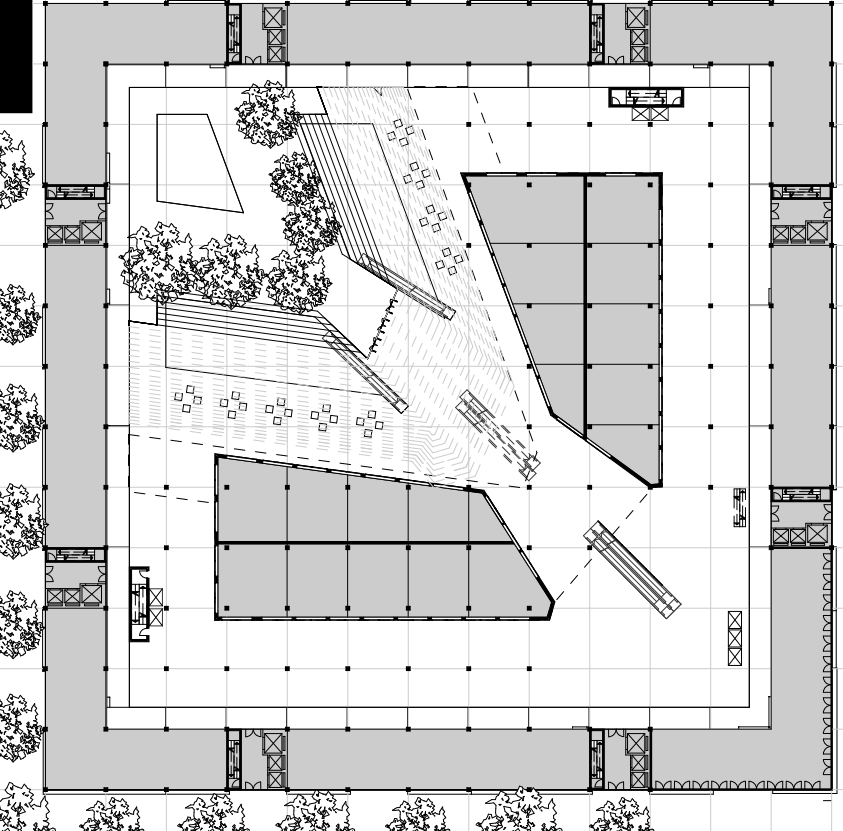
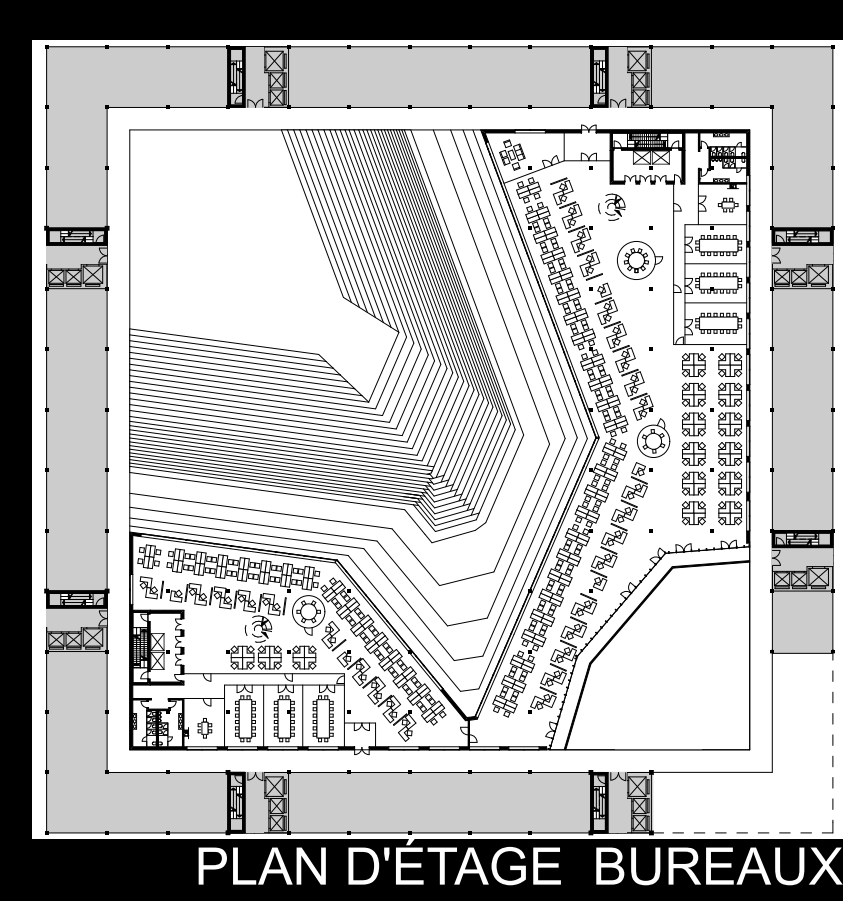
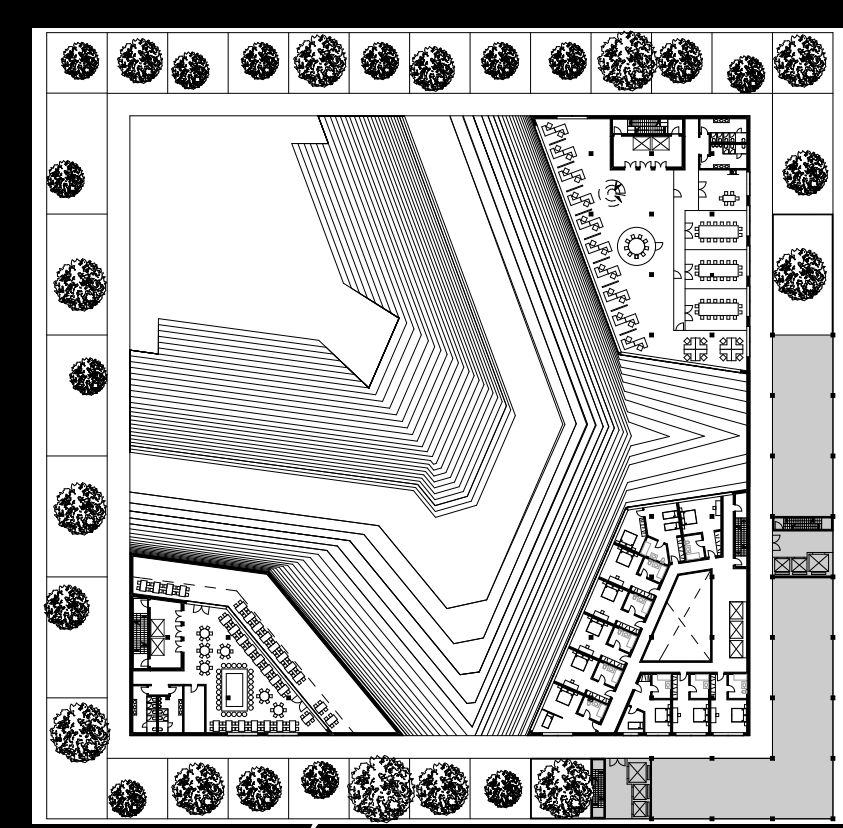
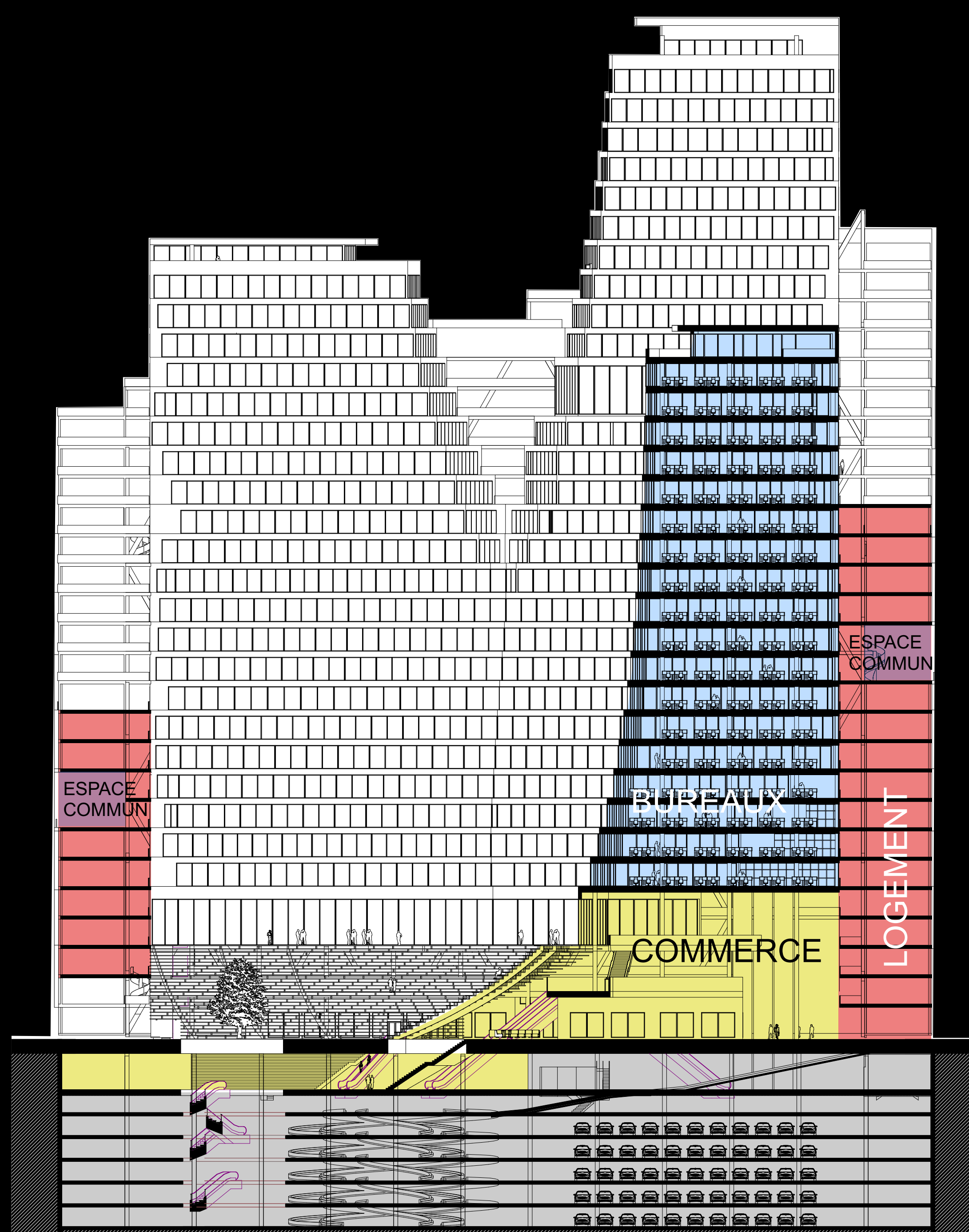
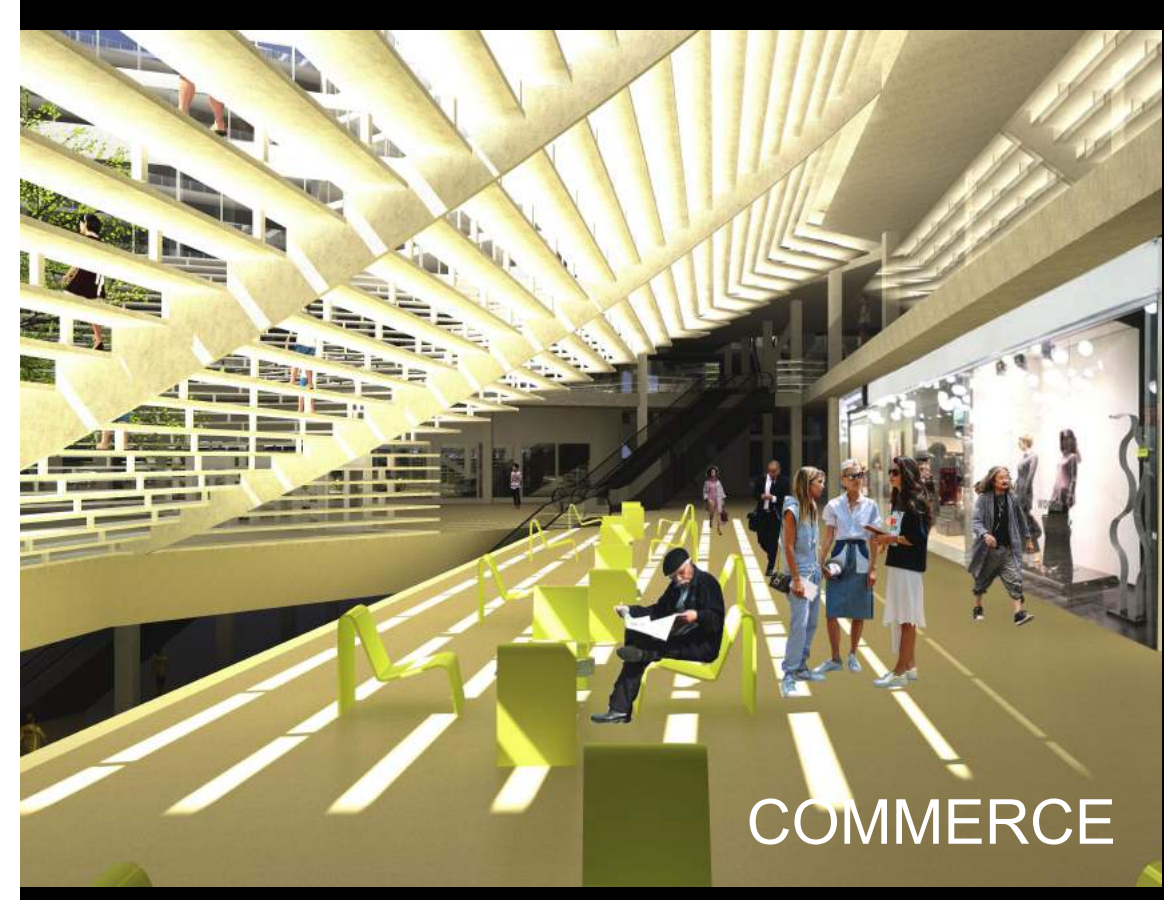
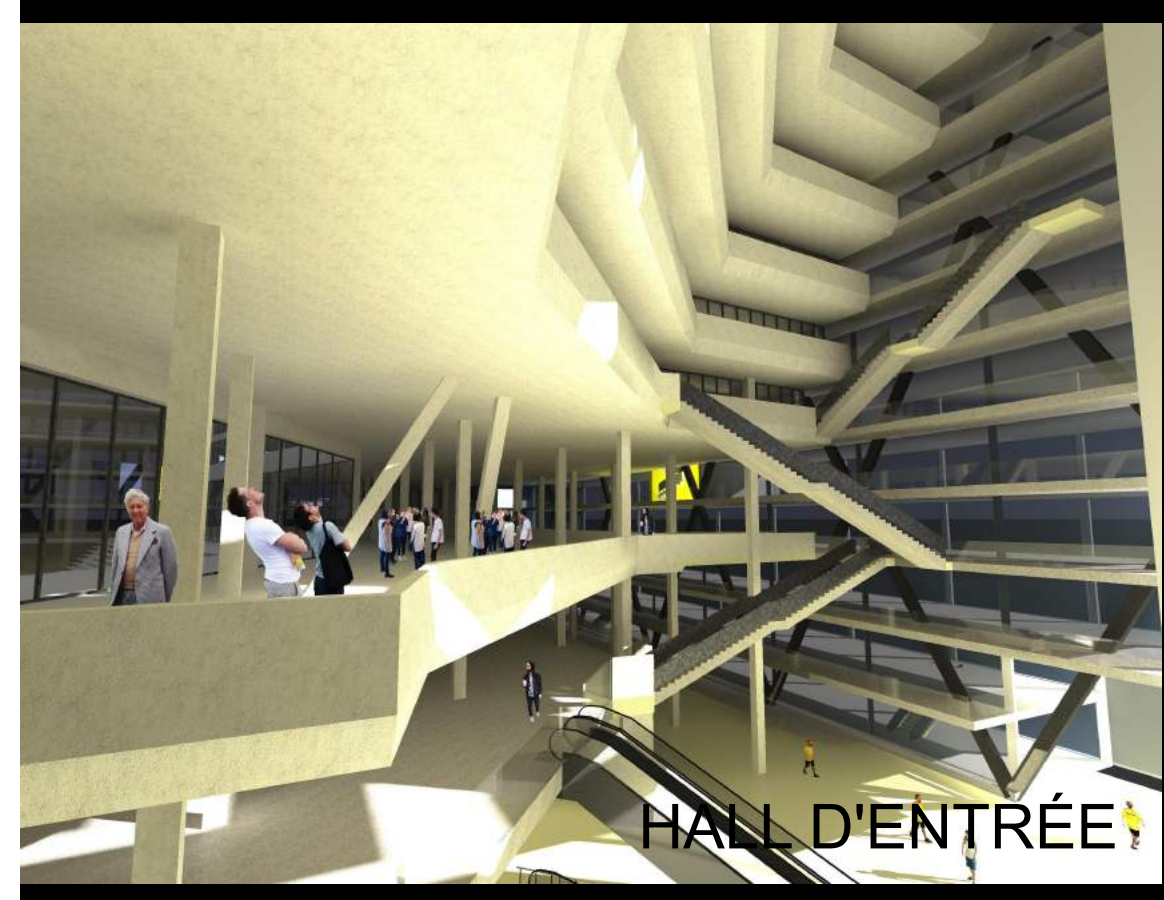
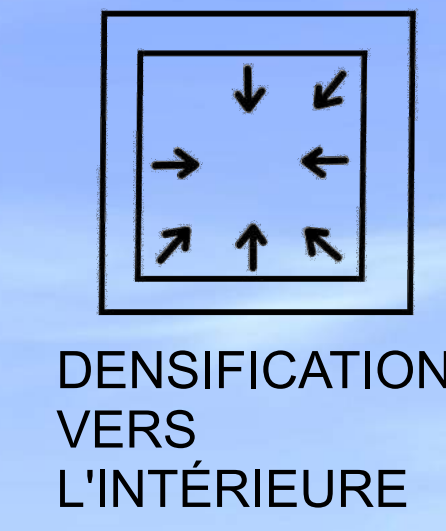
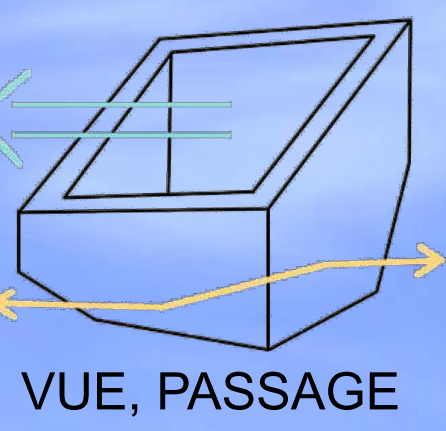
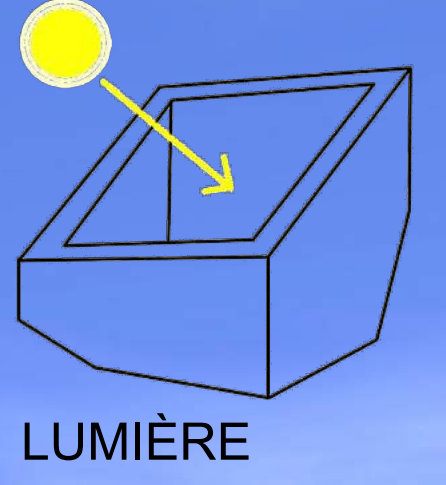
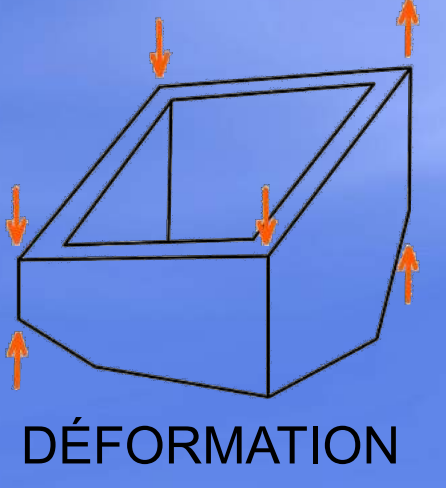
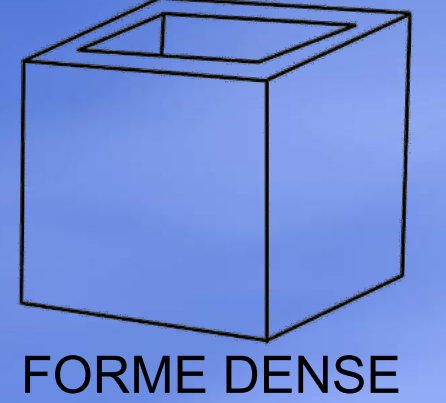
CONTEXTE URBAIN

PROGRAMMATION

LOGEMENT	47.000mq	28%	
COMMERCE	20.000mq	12%	
BUREAUX	35.000mq	21%	
HOTEL	7.000mq	4%	
PARKING	36.800mq	22%	
JARDIN D'ENFANTS, CRÈCHE	1.000mq	0,6%	
LOBBY PRINCIPALE, LOBBY D'HOTEL	750mq	0,4%	
RESTAURANT, BAR KARAOKE, BAR D'HOTEL	3.000mq	2%	
FITNESS, PISCINE	13.000mq	8%	
THÉÂTRE	3.000mq	2%	

SURFACE EN TOTAL **166.550mq**

SURFACE DU SITE 13.689mq
SURFACE BATIE 10.816mq **79%**
L'EMPRISE DU SOL **12,1**



LES ESPACES COMMUNS



LES LOGEMENTS

