

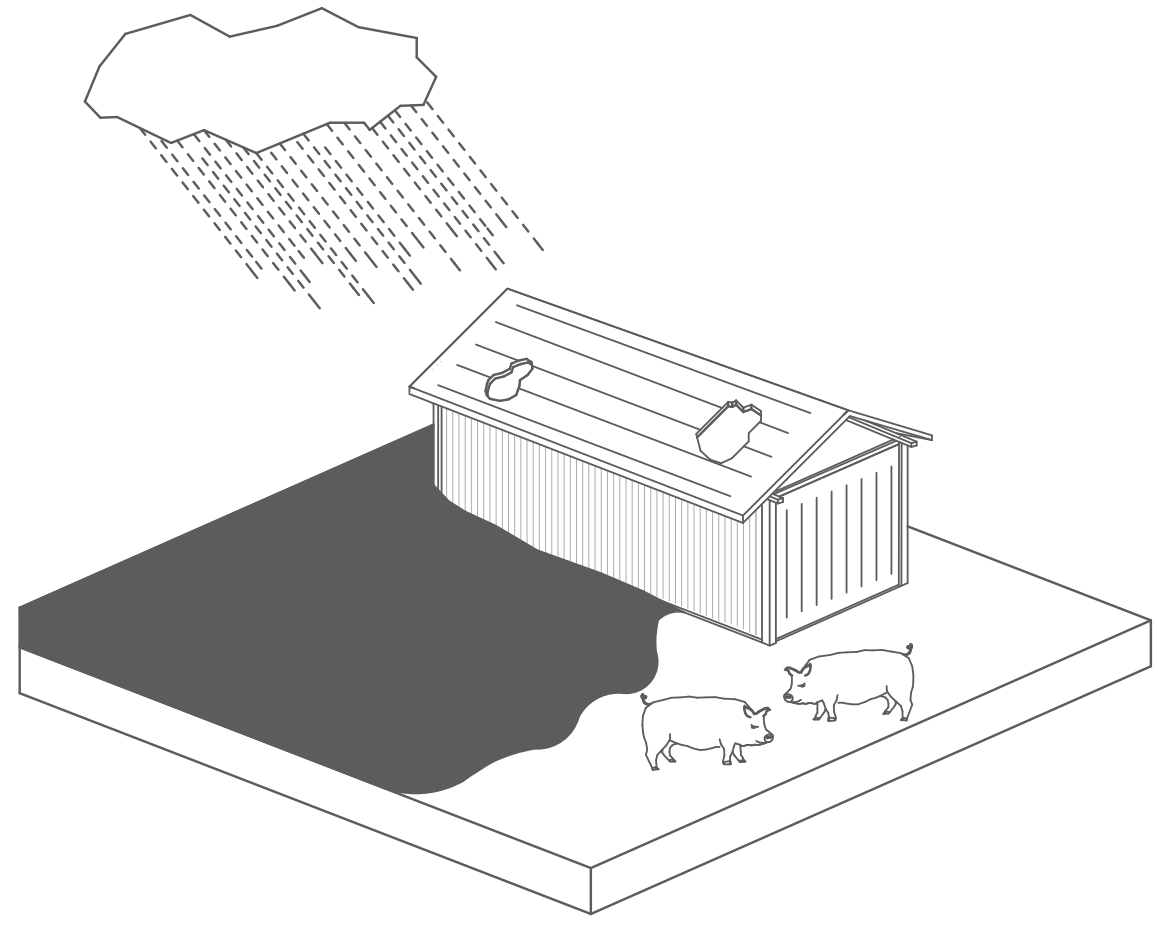
PLANIFIER L'AUTO CONSTRUCTION

PFE JUIN 2017 - HAFFAF SORAYA - POISSON ESTELLE

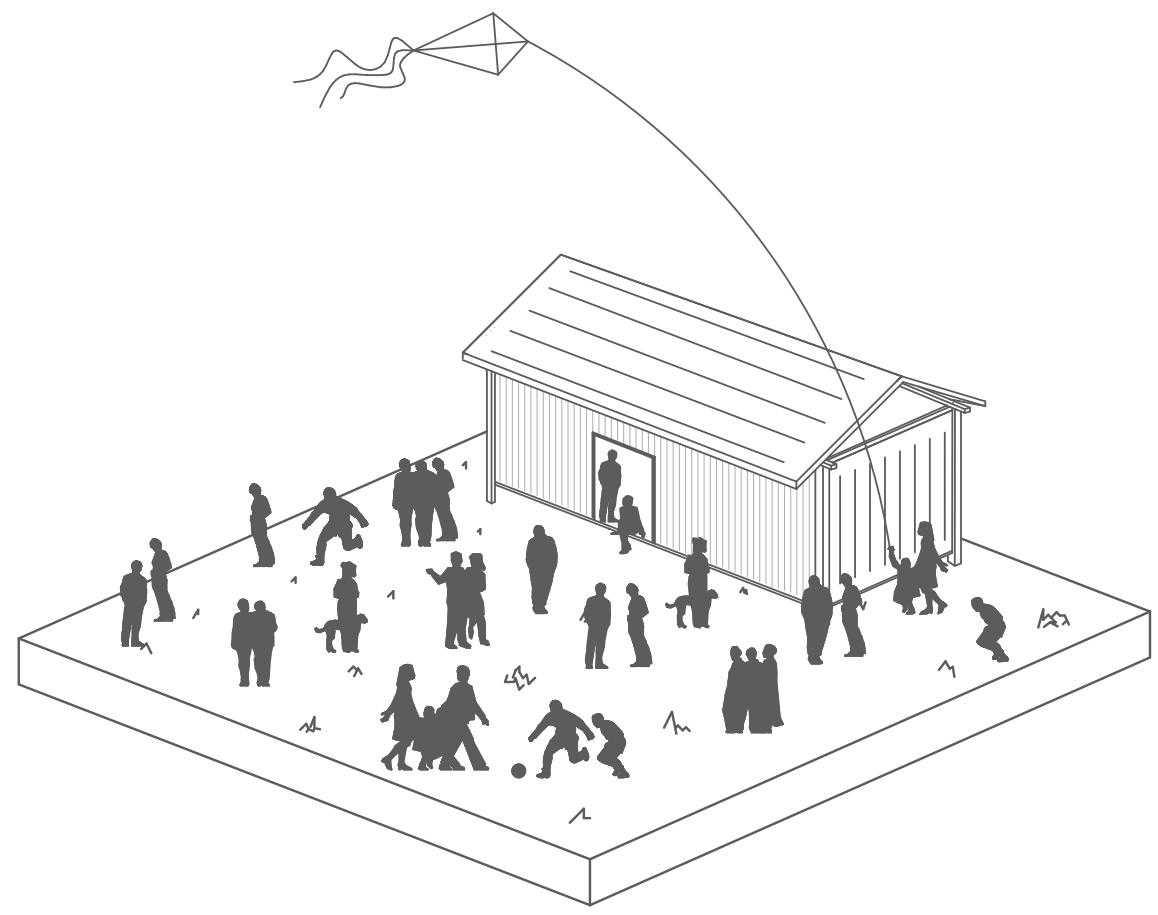
UNE SOLUTION POUR SAINT LAURENT DU MARONI ?

DEI - WEISSMANN MARTINE - PIOT MARIE CAROLINE

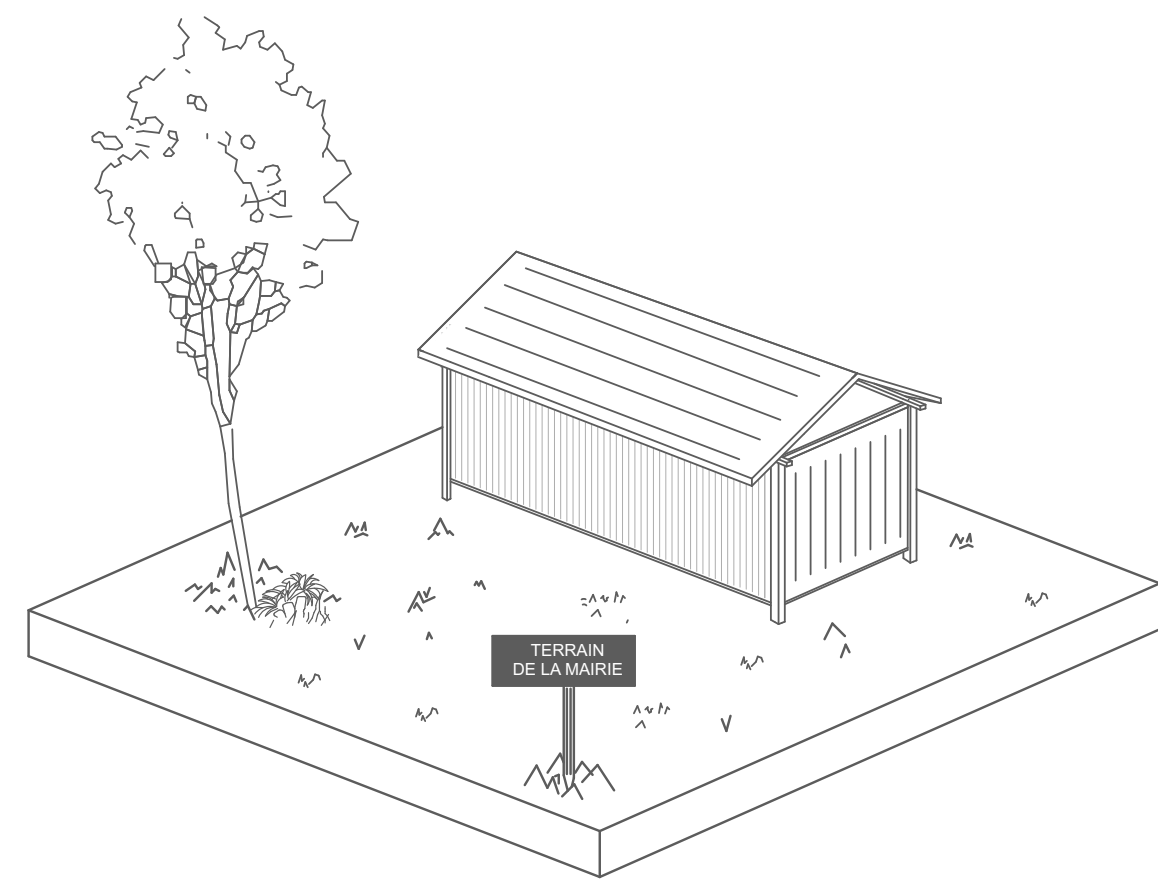
DEFAUTS



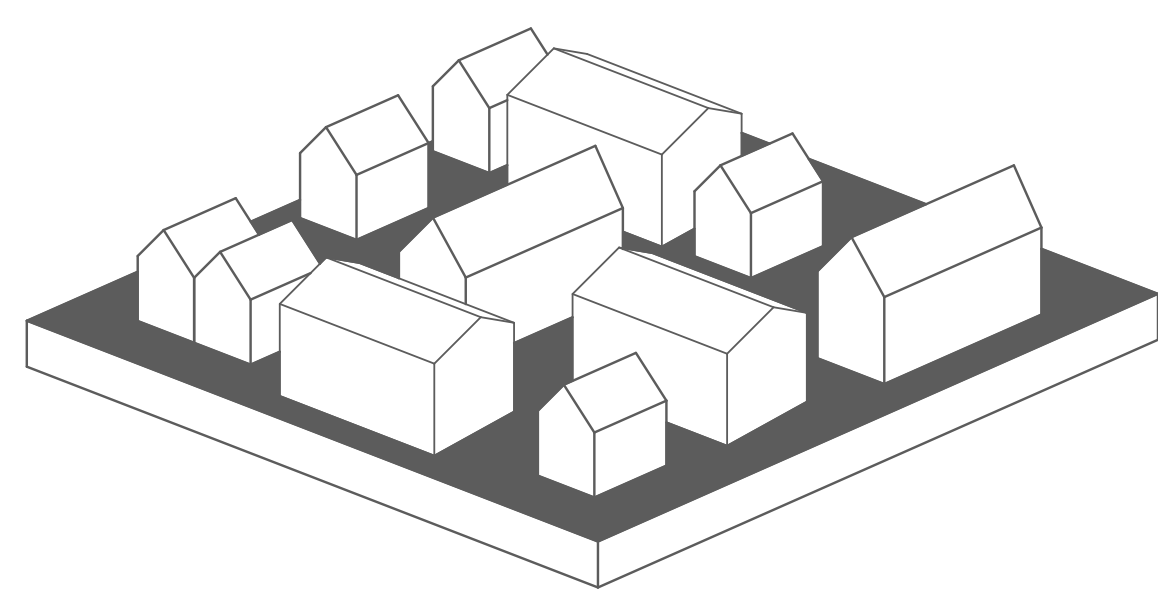
CONSTRUCTION A RISQUE ET INSALUBRE



SURPOPULATION

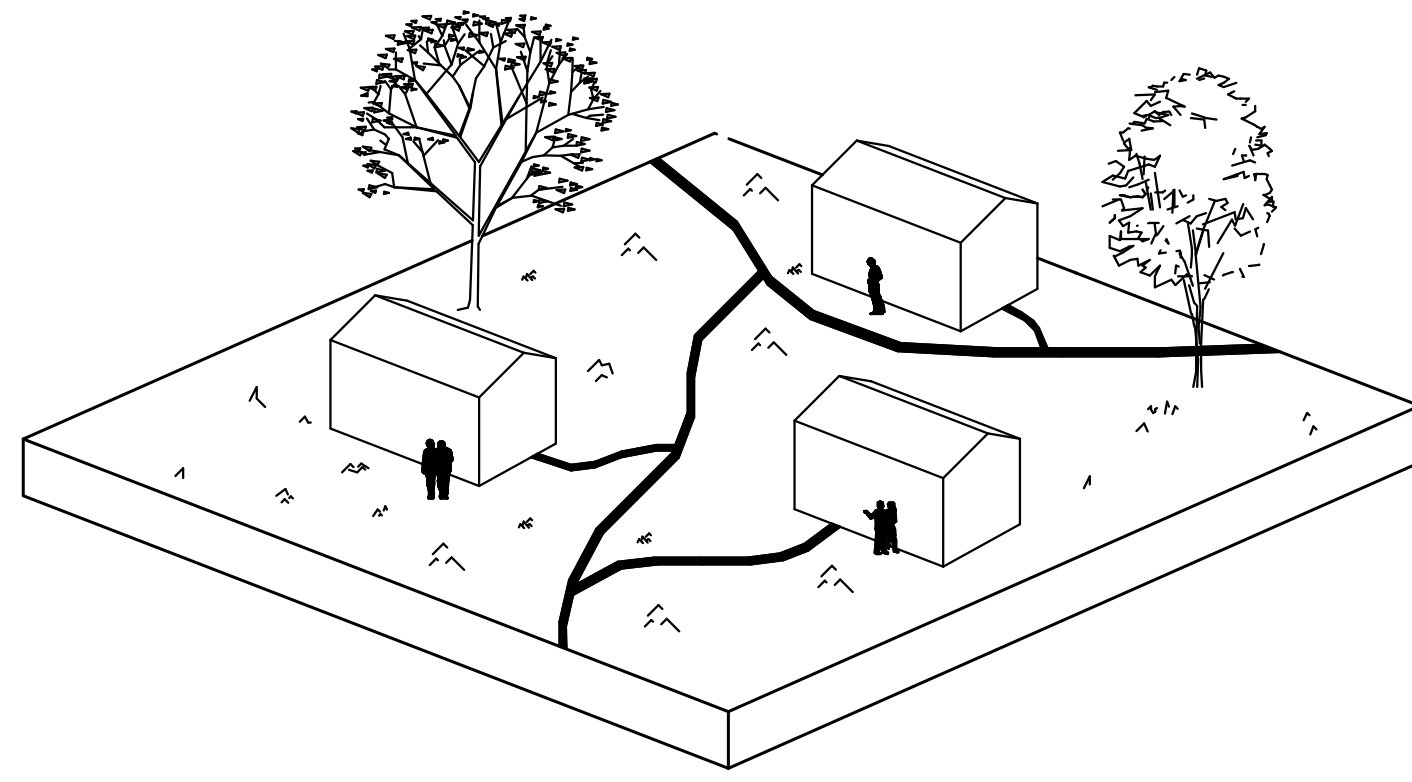


IMPLANTATION ILLEGALE

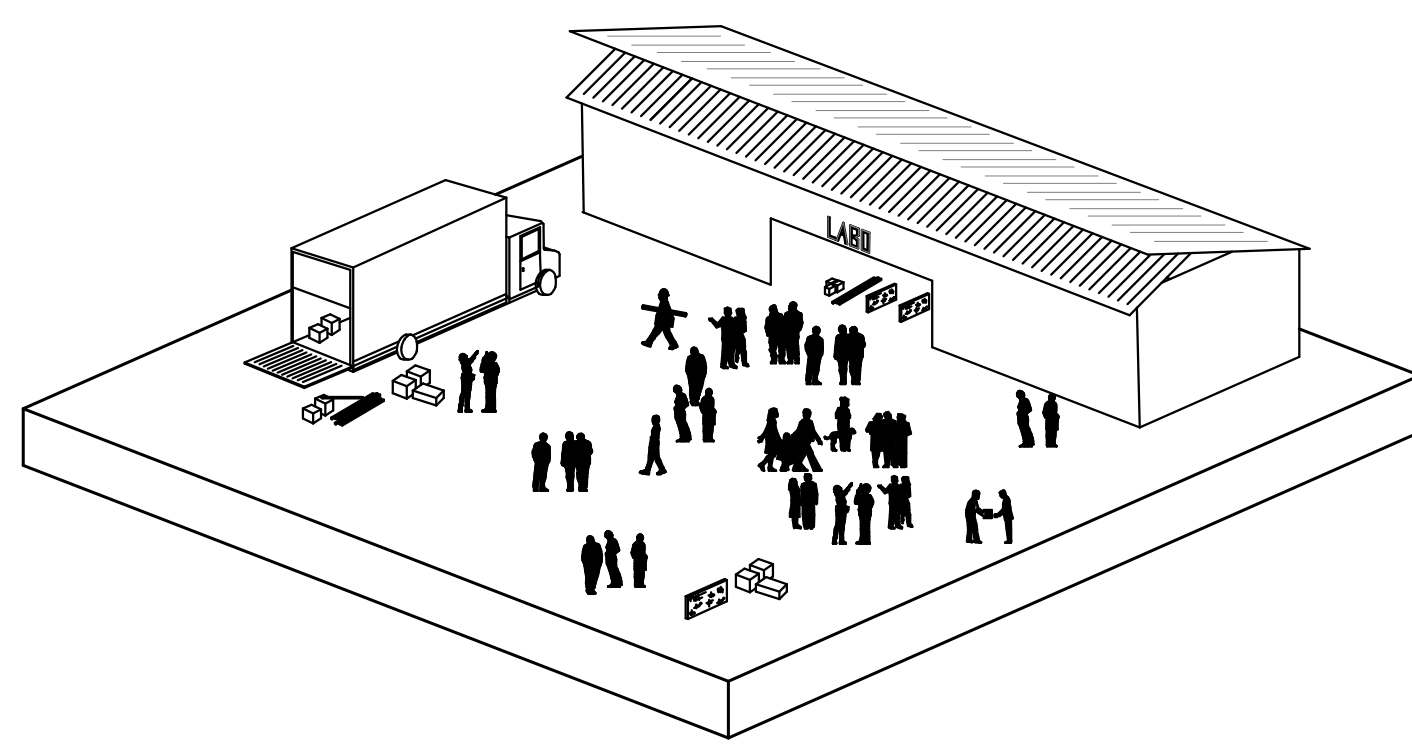


ABSENCE D'ESPACE PUBLIC

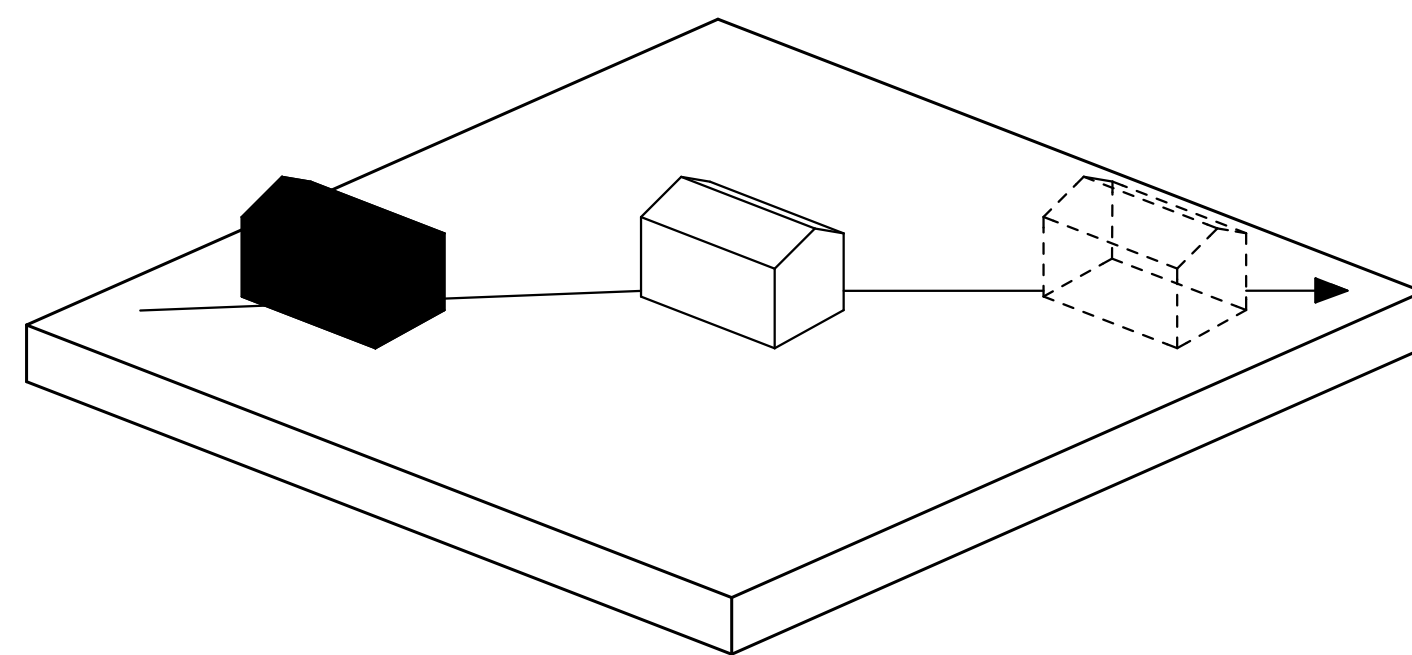
LE MANIFESTE



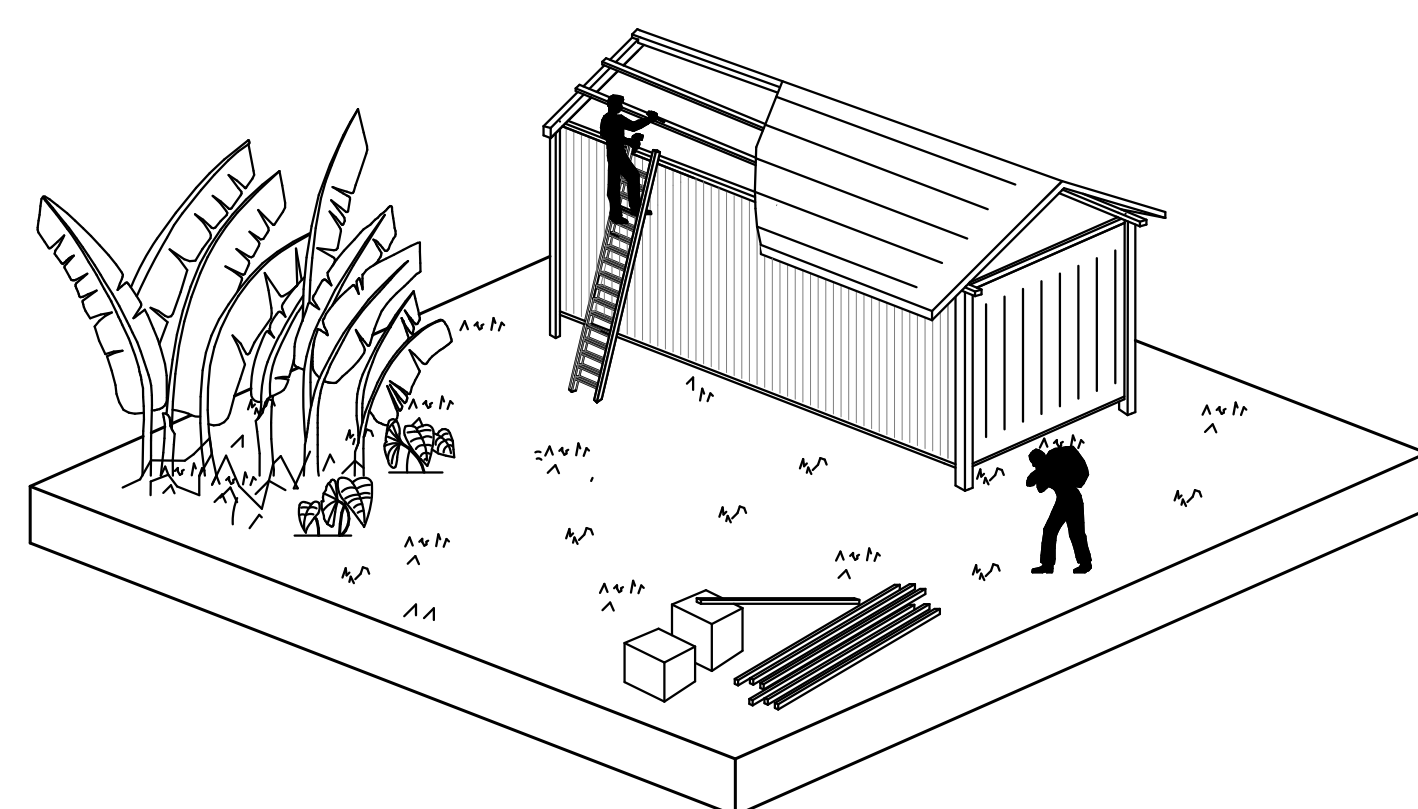
FAVORISER L'AUTO-CONSTRUCTION



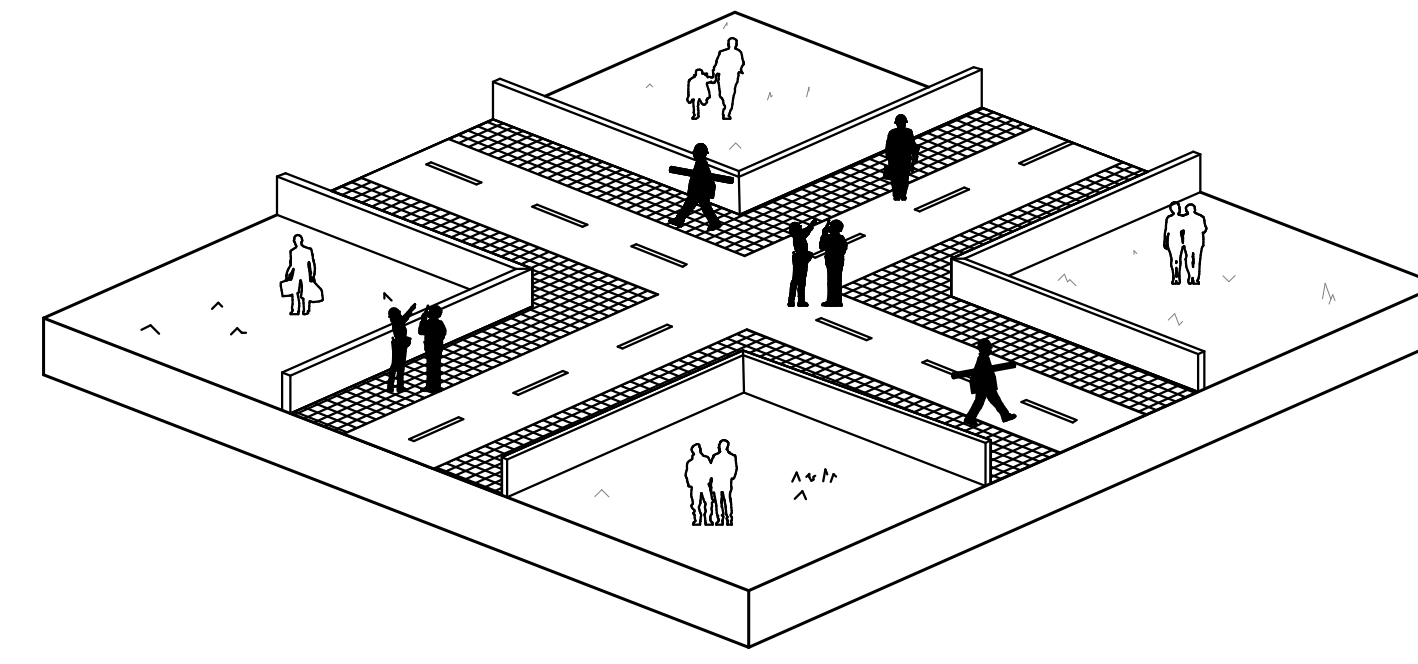
LABORATOIRE DE L'HABITAT



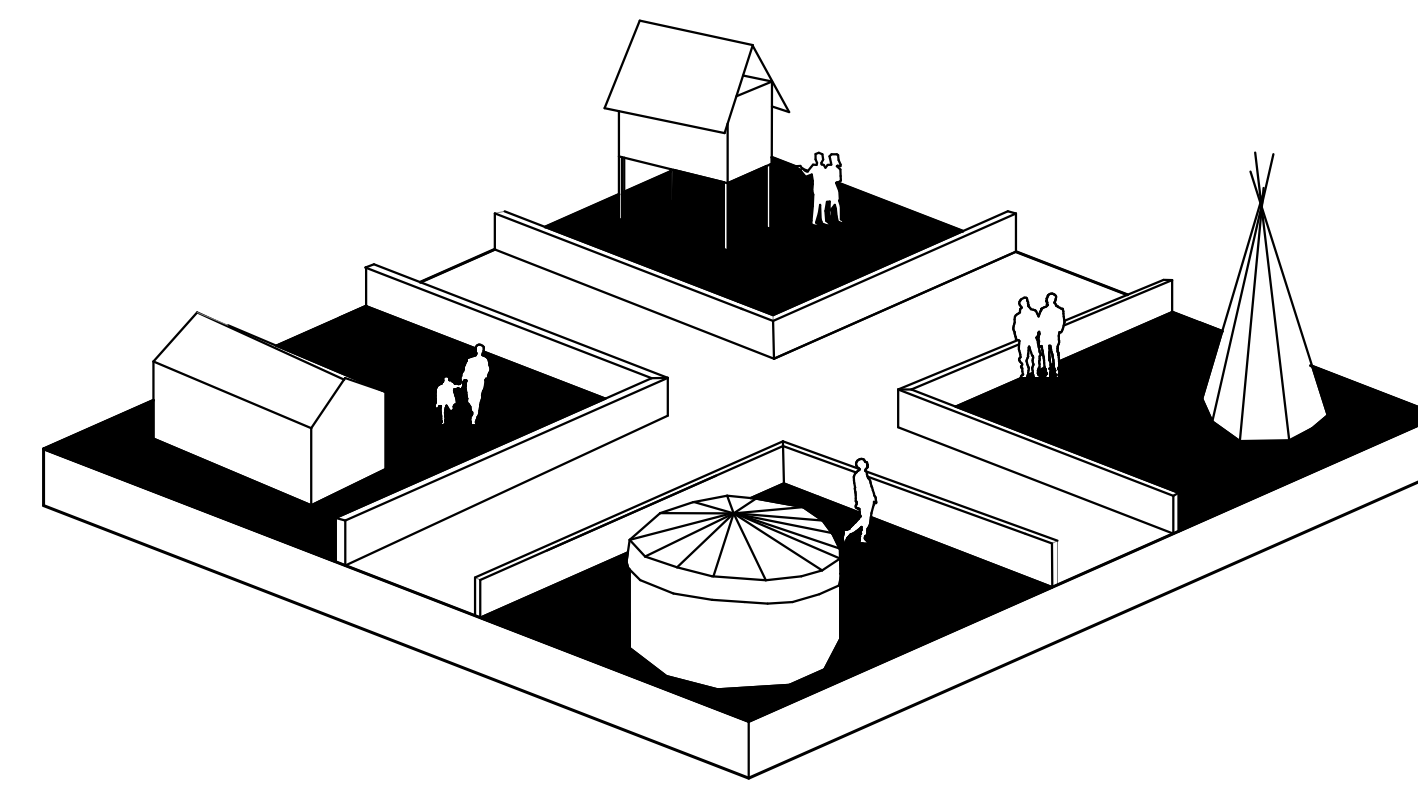
PROCESSUS EVOLUTIF



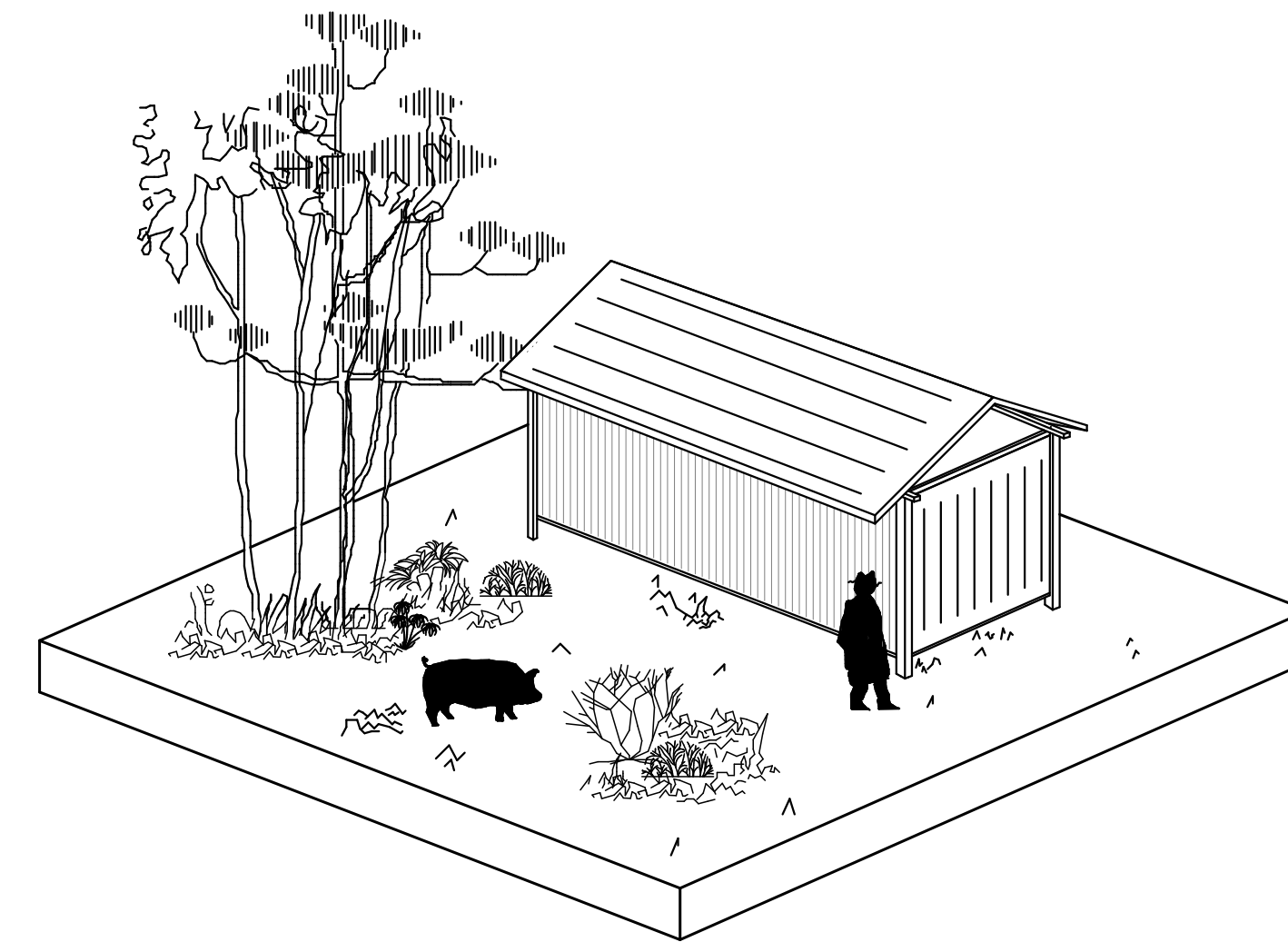
FAIBLE COUT INVESTISSEMENT LONG TERME



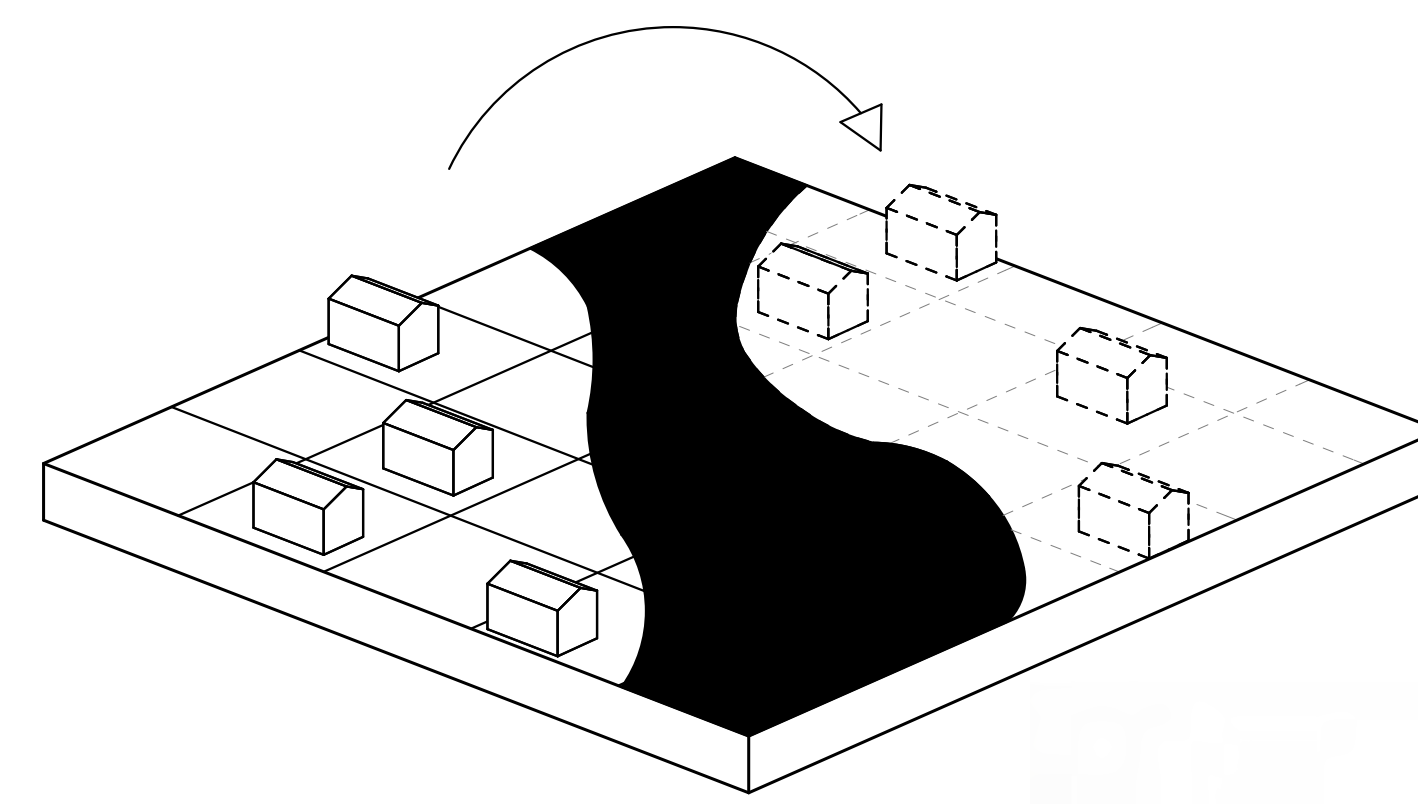
QUESTIONNER LE ROLE DE L'ARCHITECTE



ACCOMPAGNER LE COMMUNAUTARISME

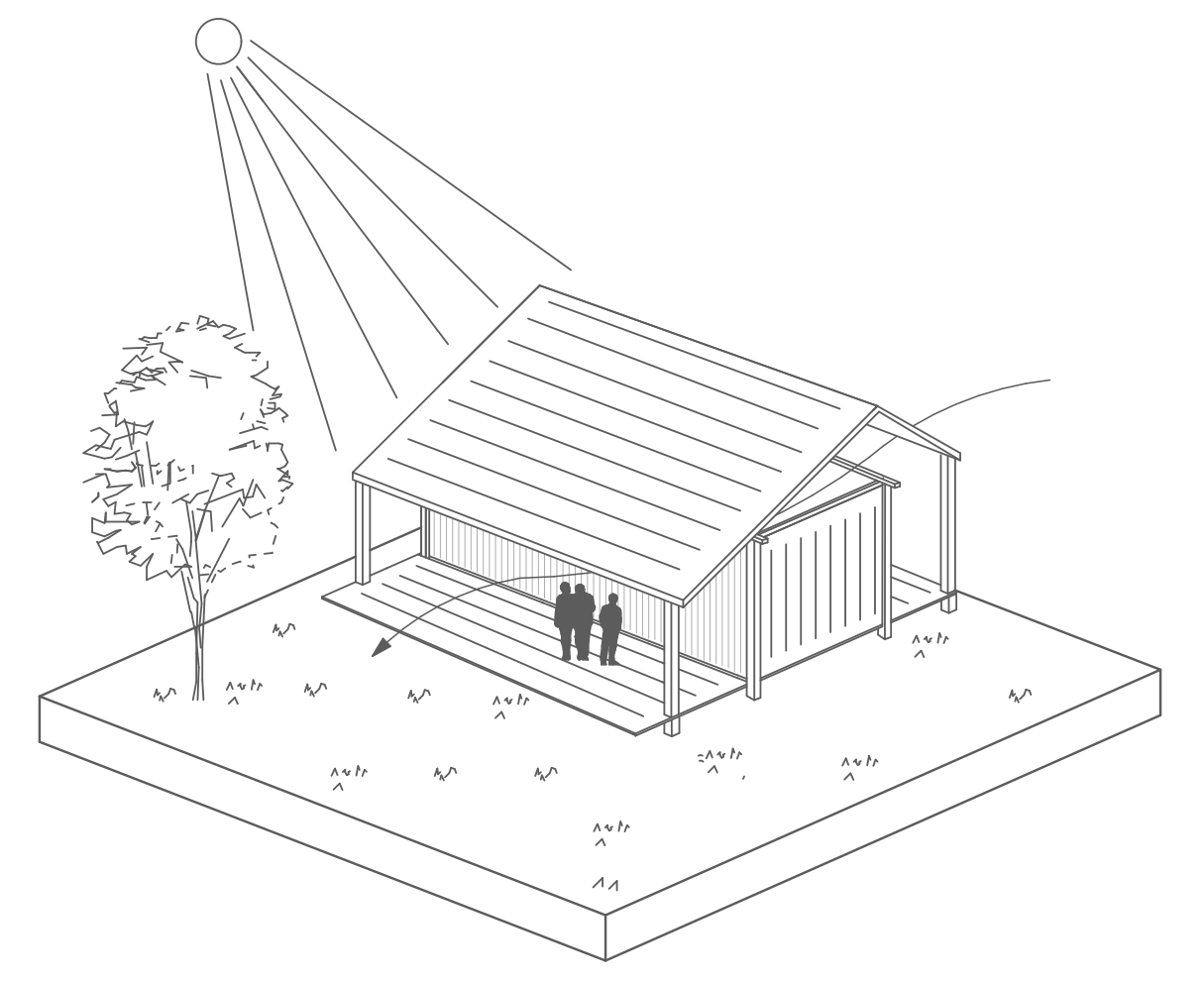


METTRE EN PLACE UNE AUTO-SUFFISANCE

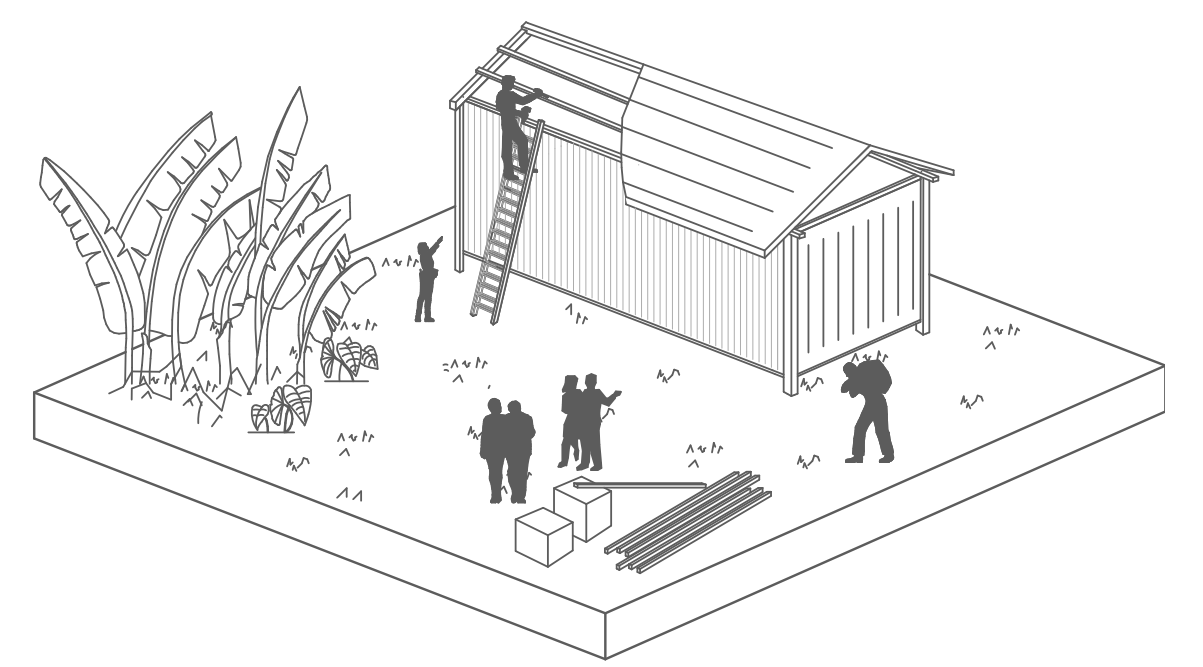


PRINCIPE THEORIQUE GENERIQUE

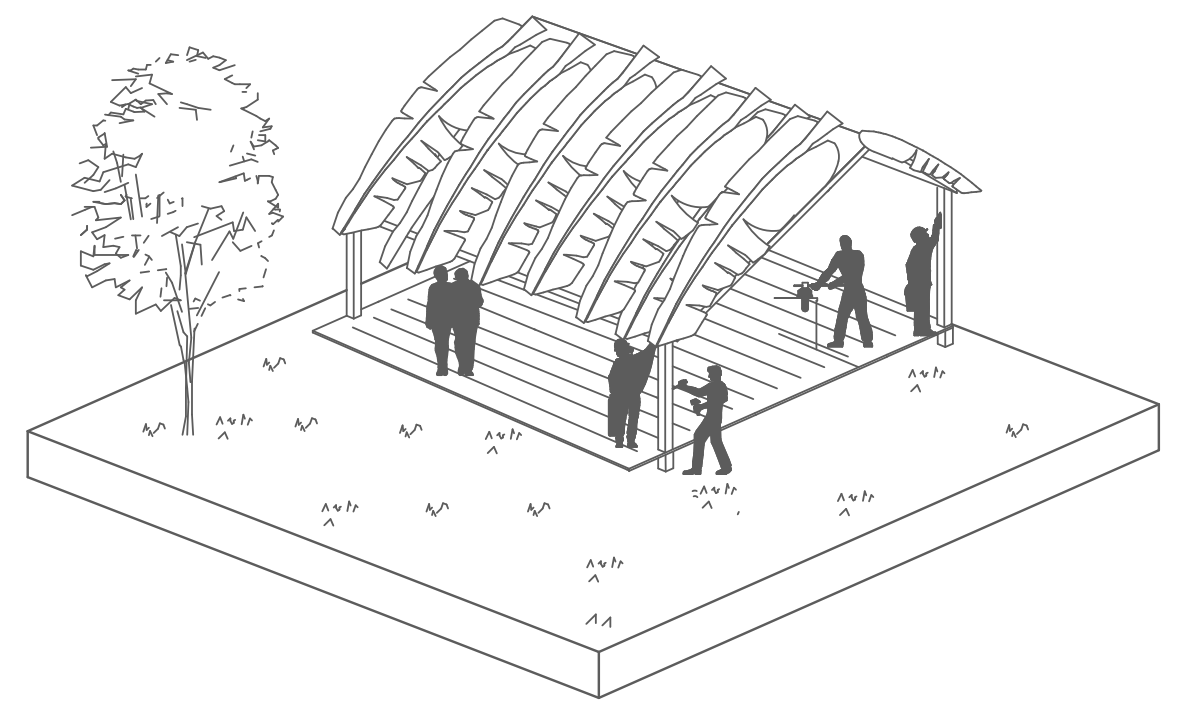
QUALITES



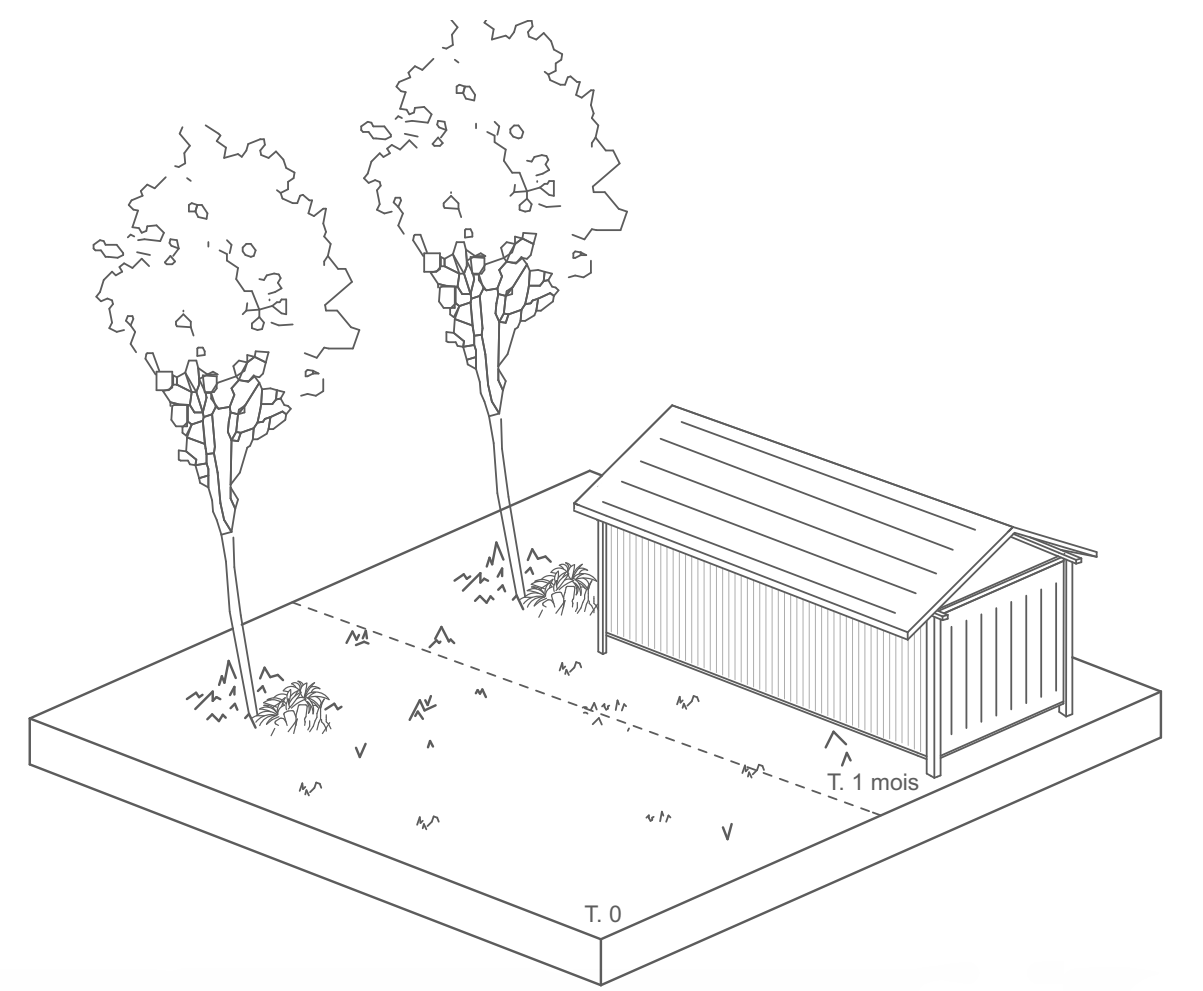
CONSTRUCTION ADAPTEE AU CLIMAT



ENTRAIDE



CREATIVITE ET SAVOIR-FAIRE LOCAUX



RAPIDITE DE MISE EN OEUVRE



HABITAT PRECAIRE



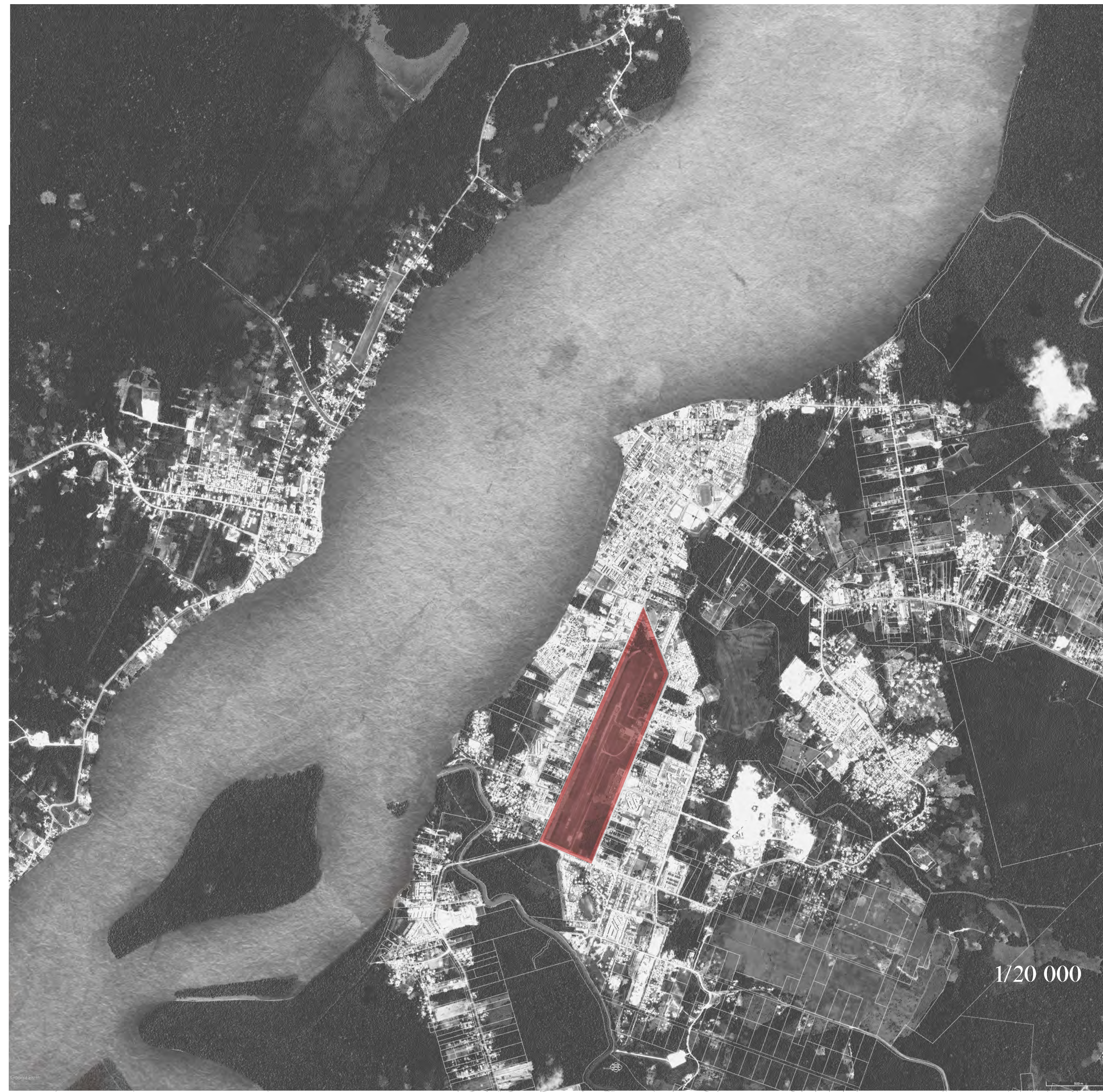
HABITAT ADAPTE



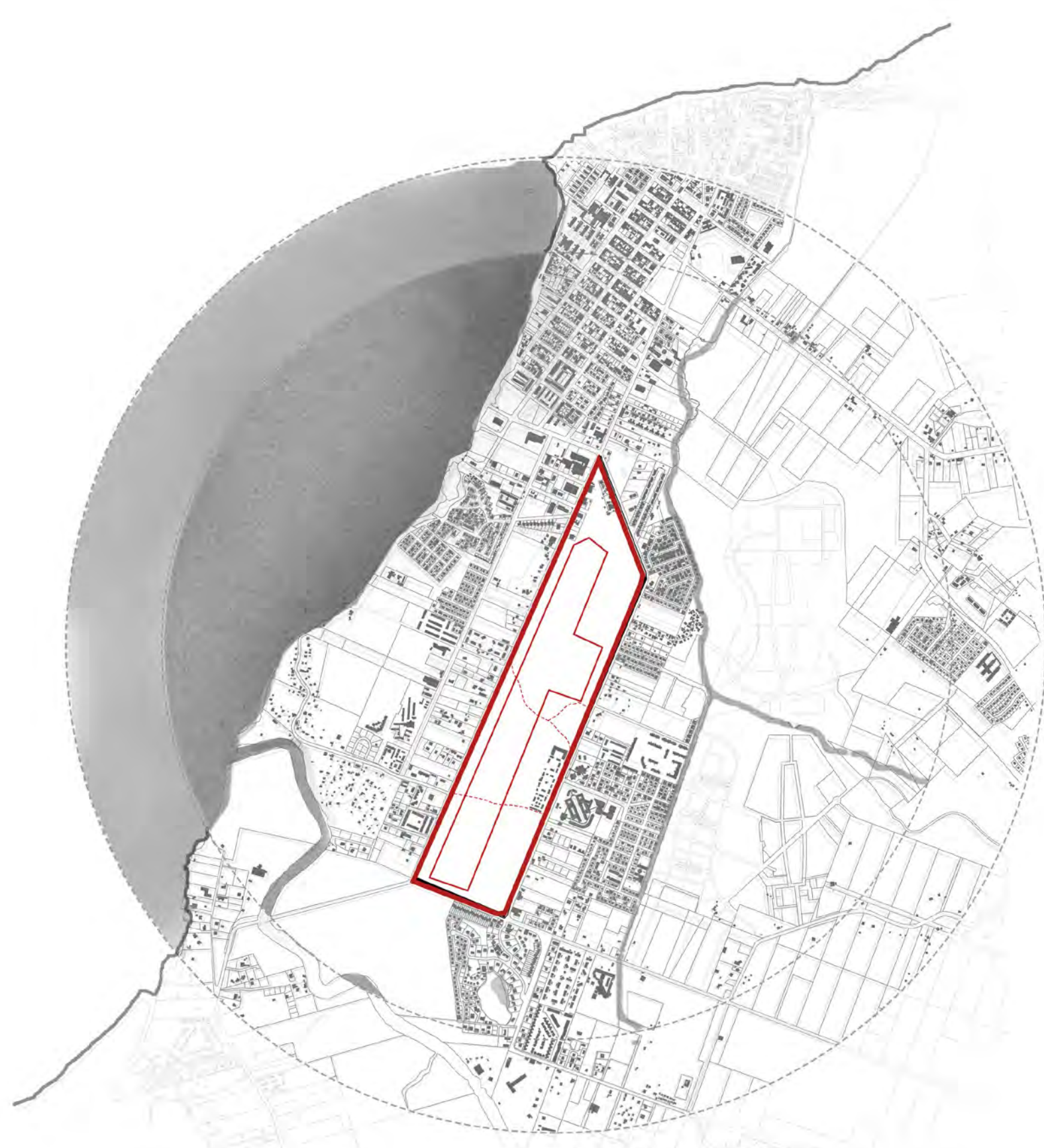
HABITAT DE BONNE QUALITE

PRESENTATION DU SITE

ALBINA
SURINAME



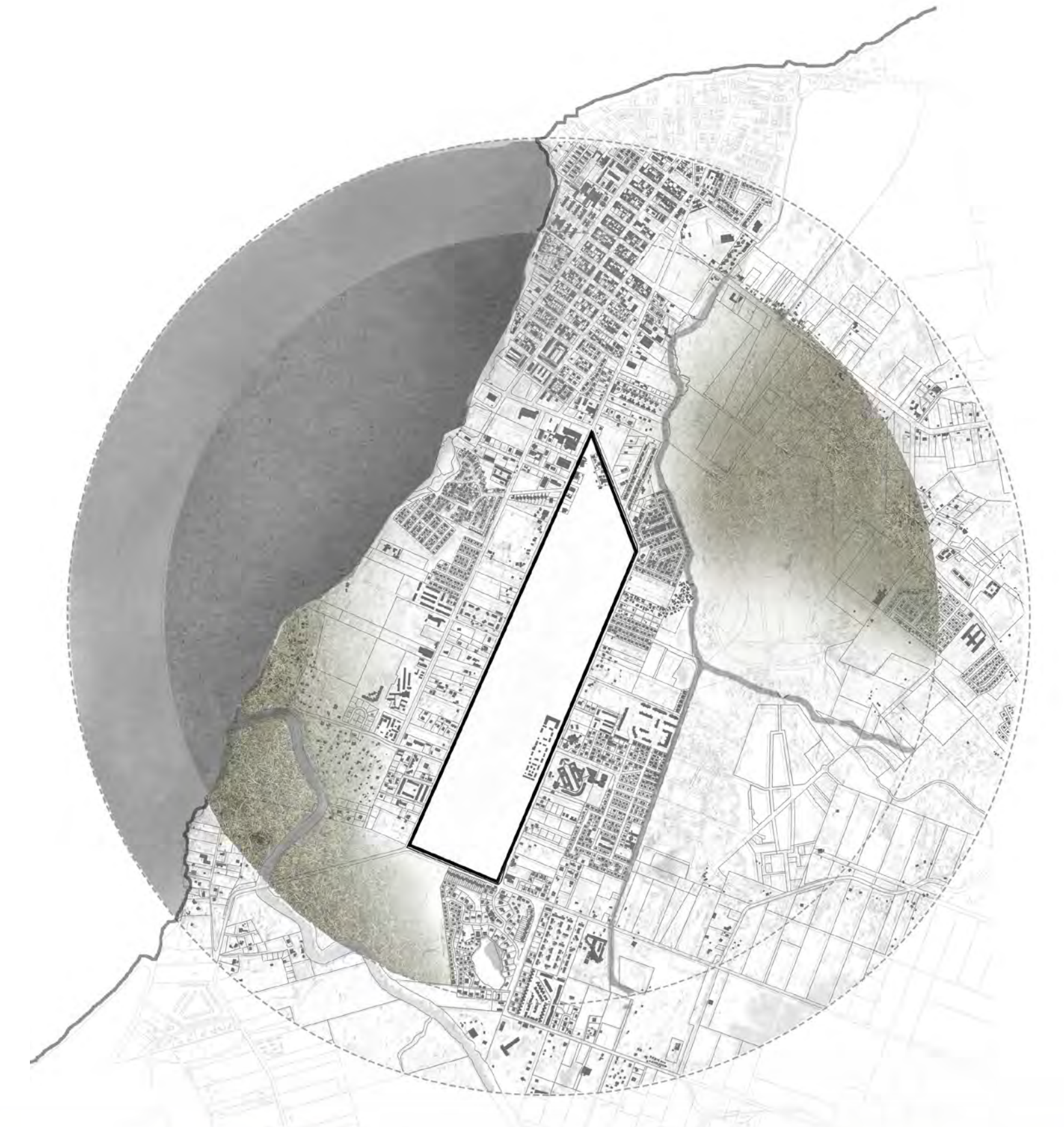
SAINT LAURENT
DU MARONI
GUYANE



FRACTURE URBAINE



HORS ZONES INNONDABLES



FRACTURE VEGETALE



PISTE DE L'AERODROME

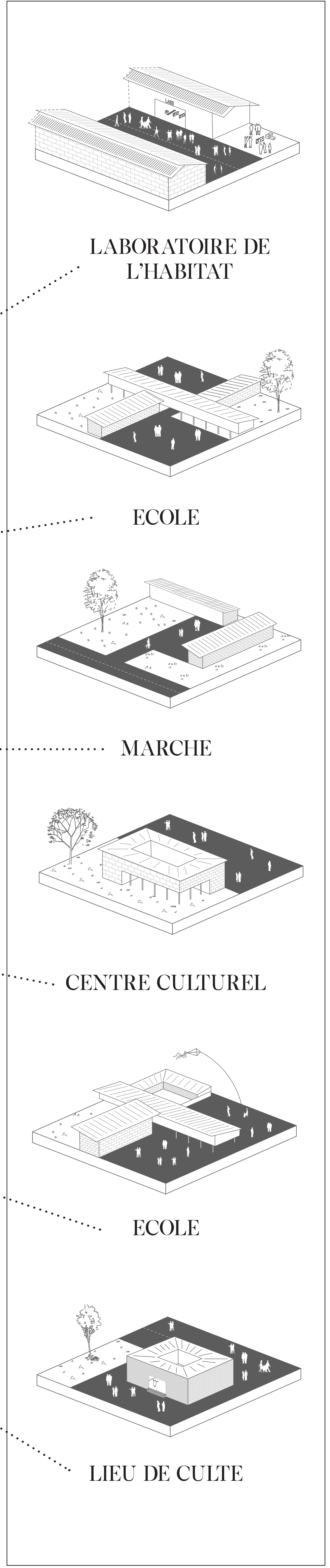
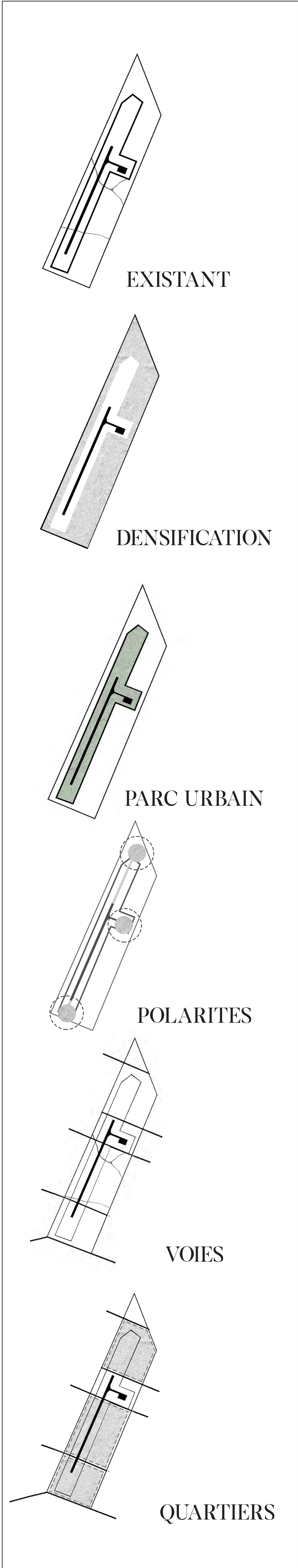


TRAVERSEE DE L'AERODROME

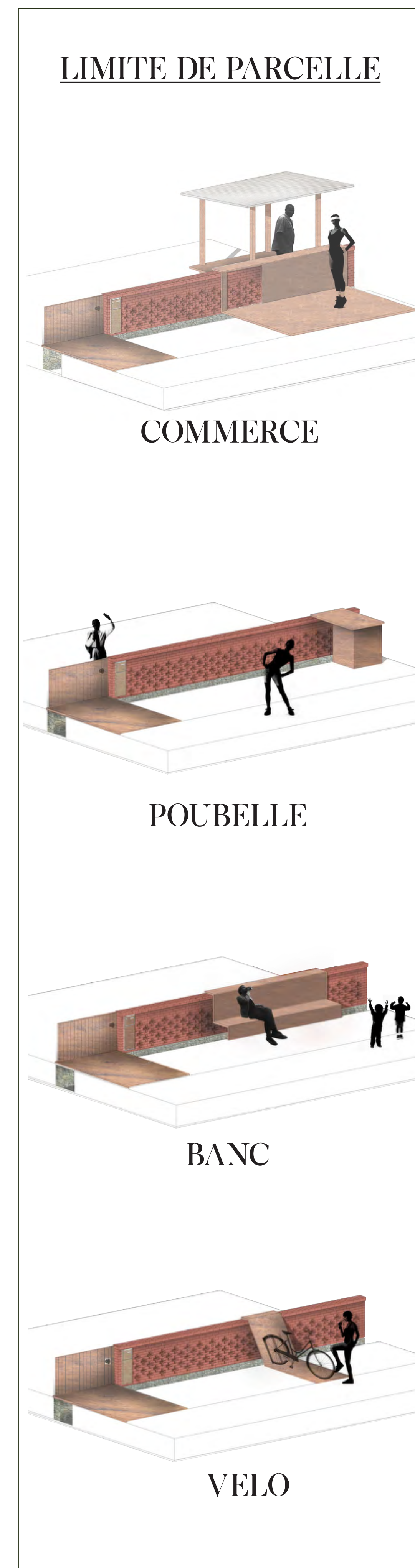
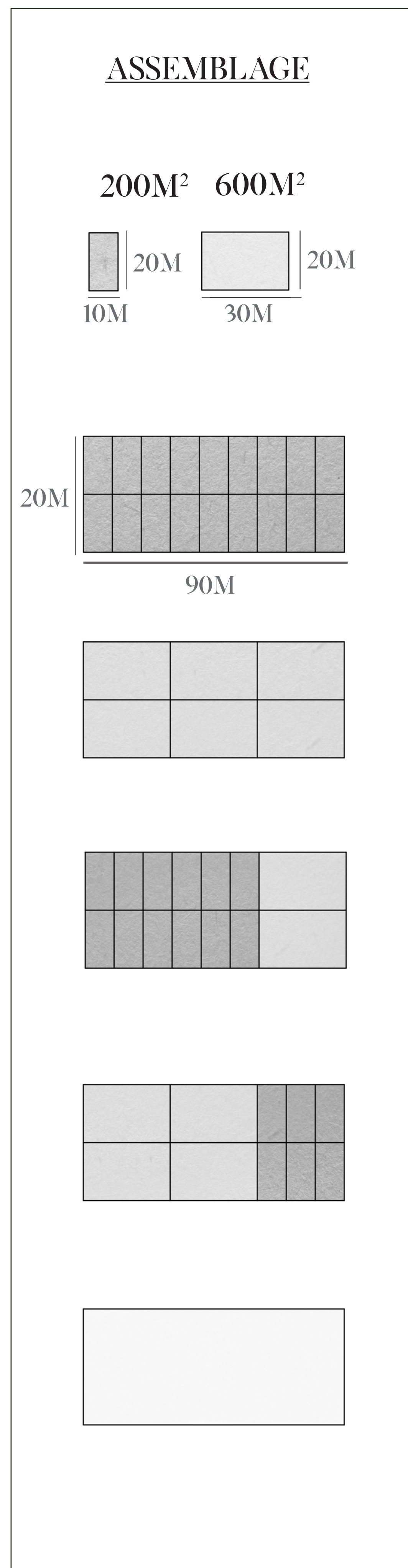


MUR D'ENCEINTE

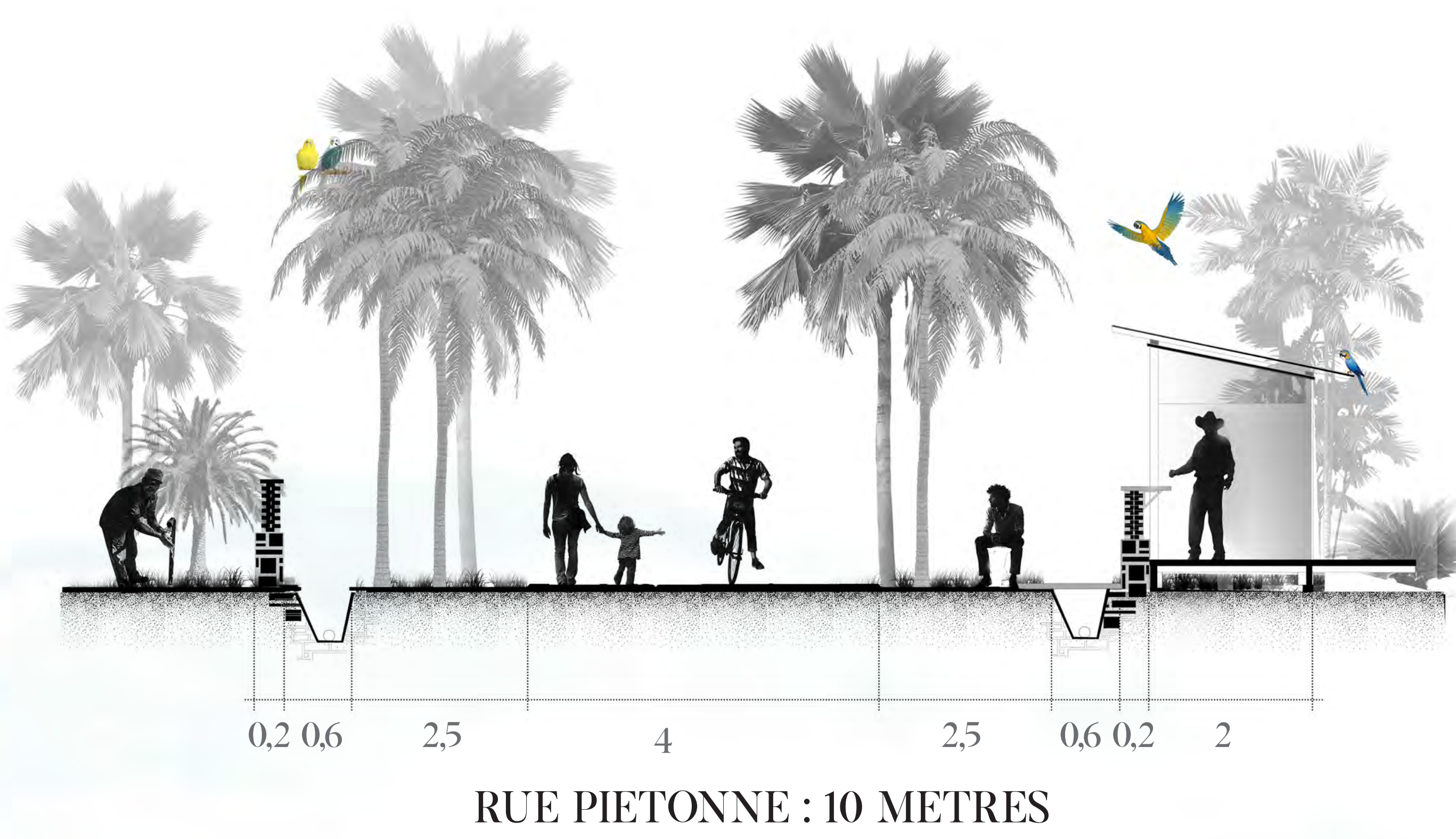
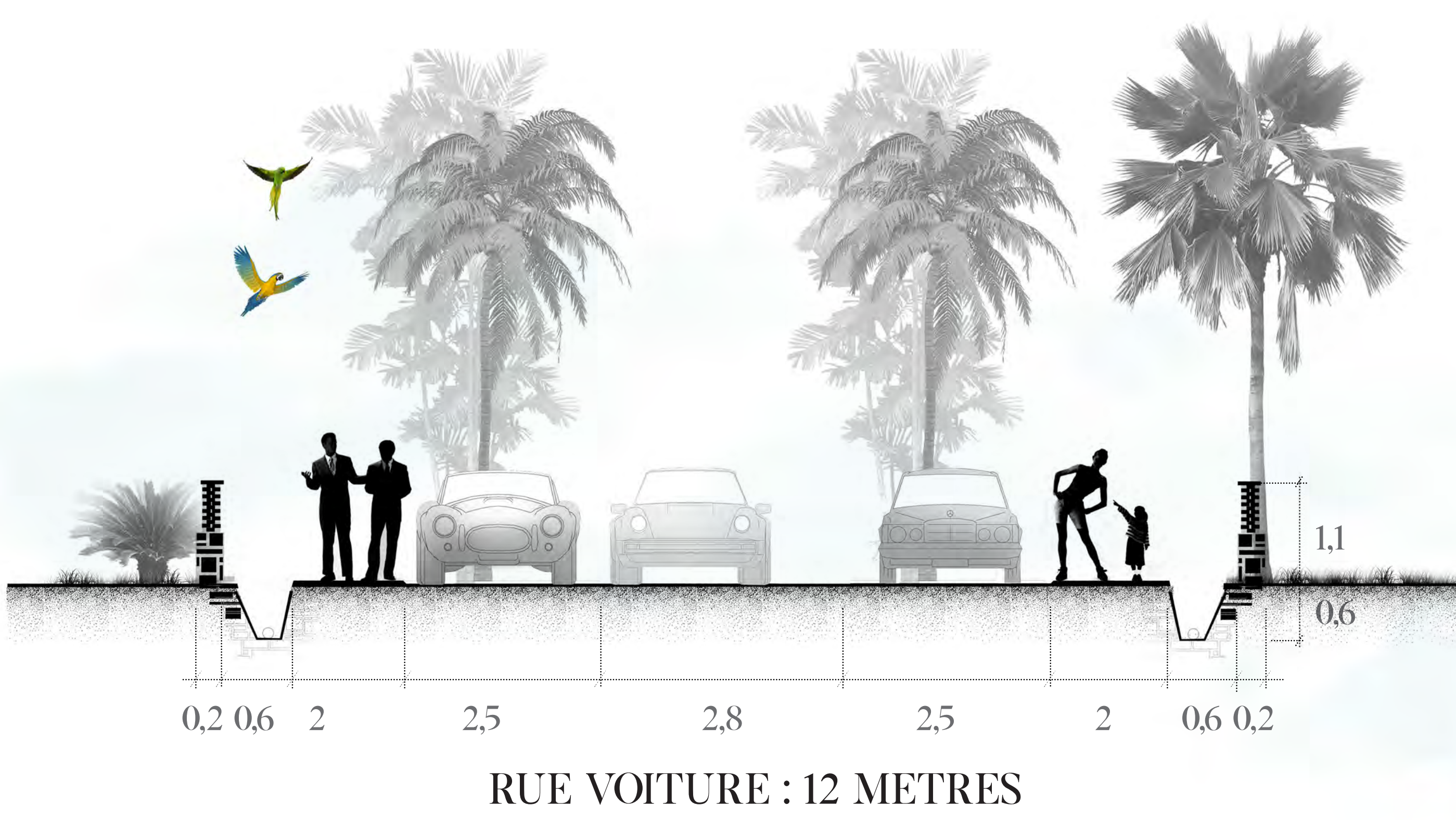
AERODROME



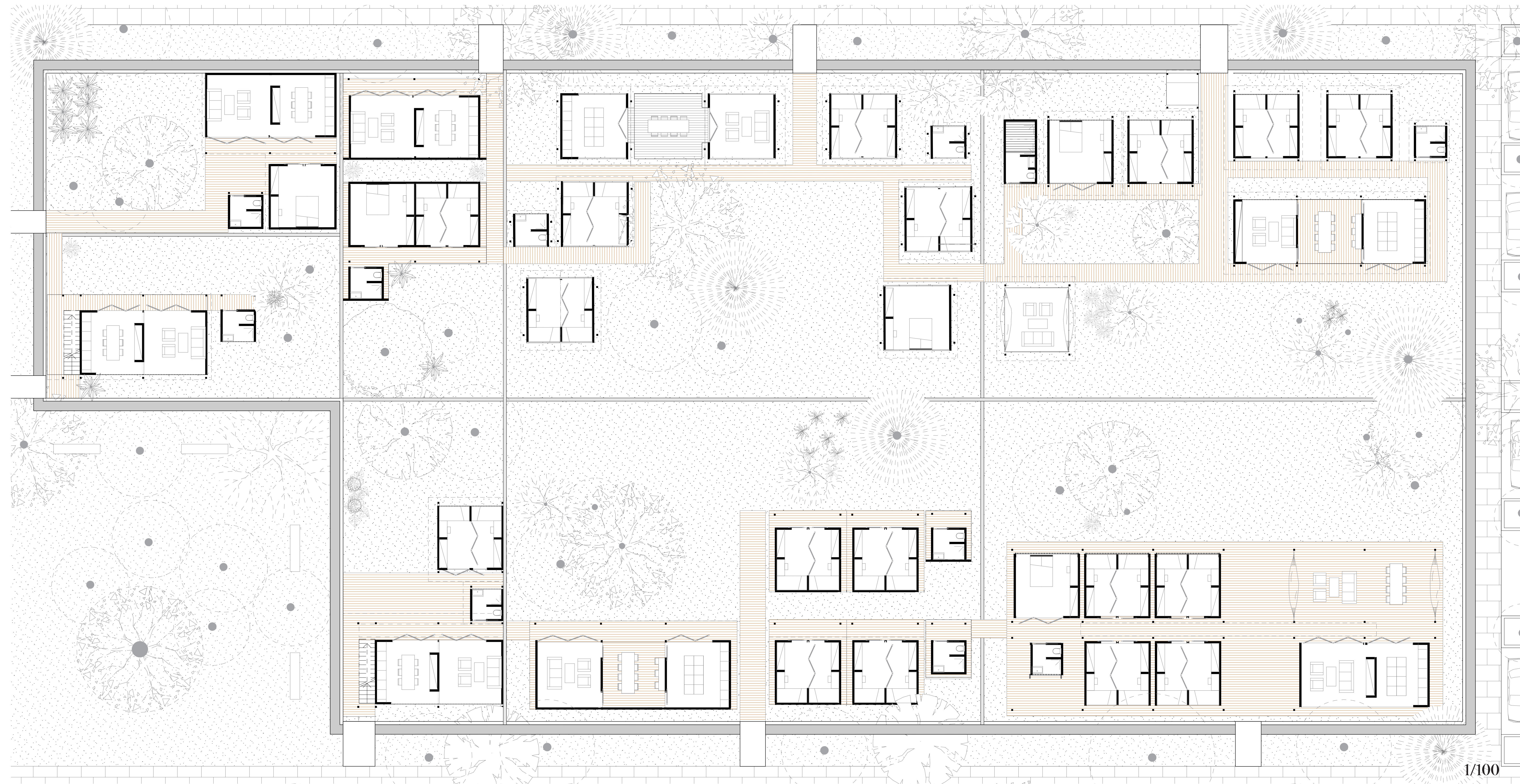
QUARTIER



1/1000EME



ILOT



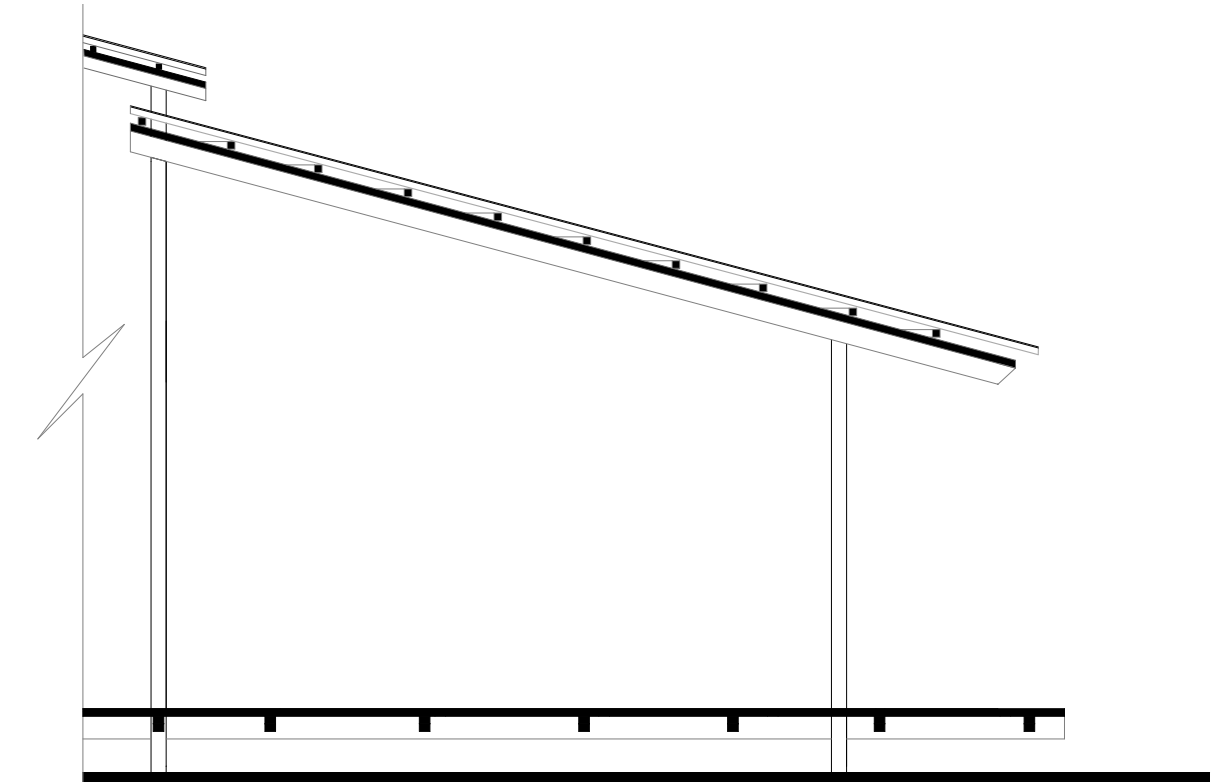
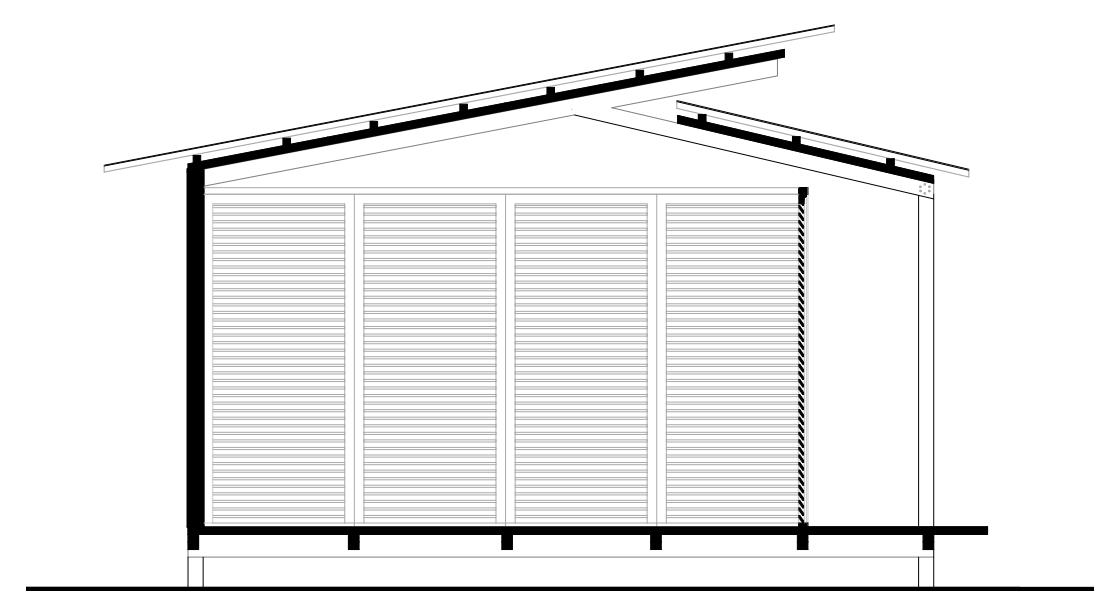
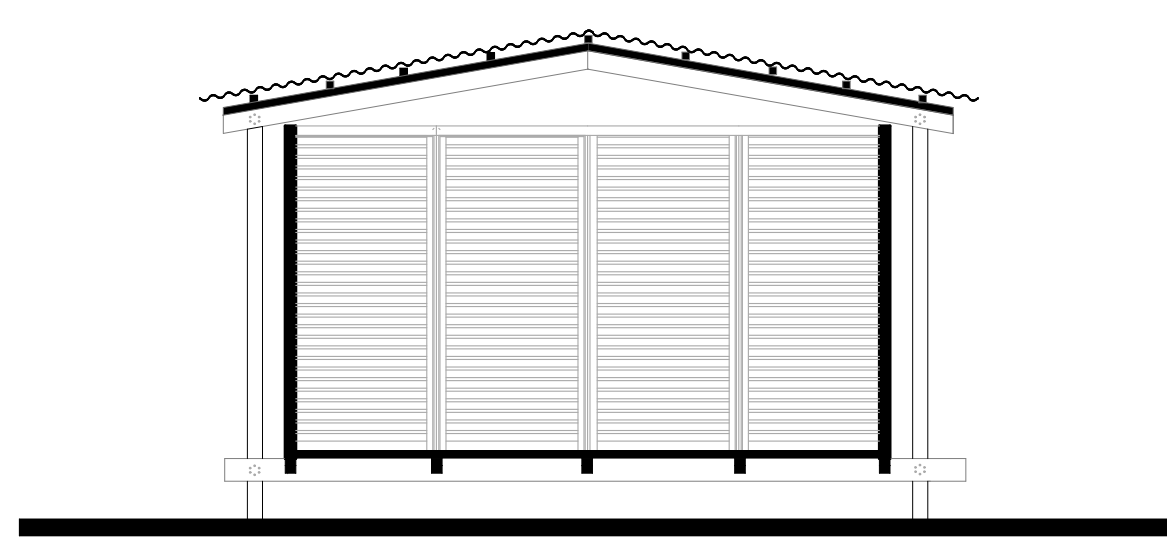
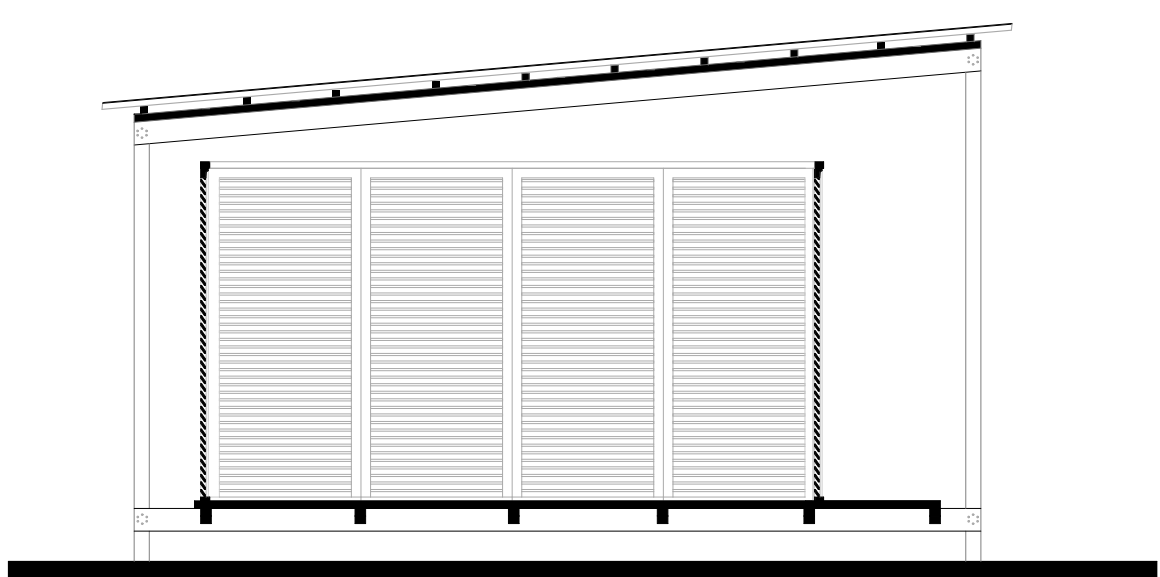
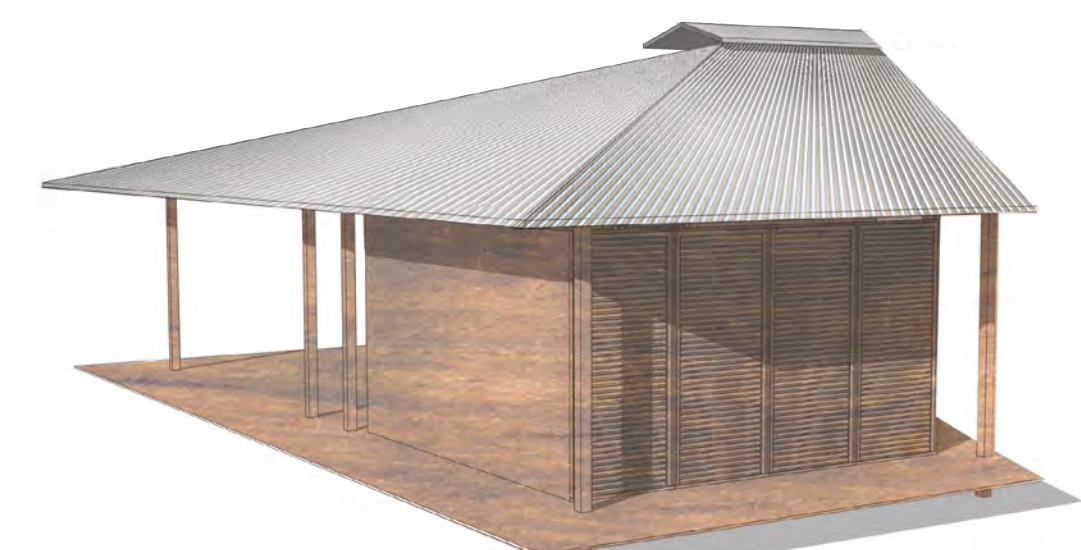
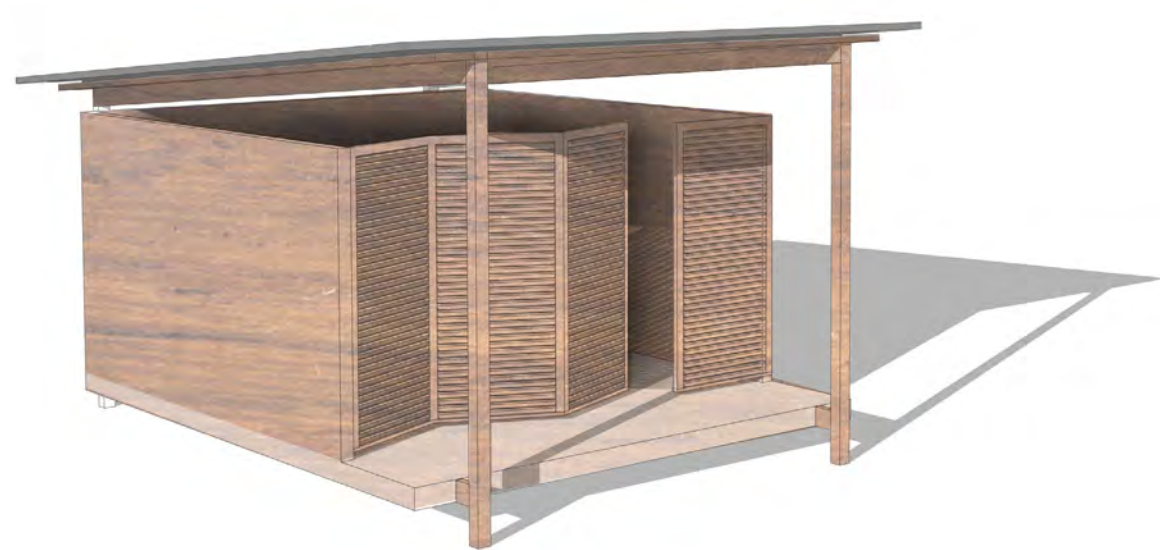
1/100

TYP0 1
SIMPLE PAN

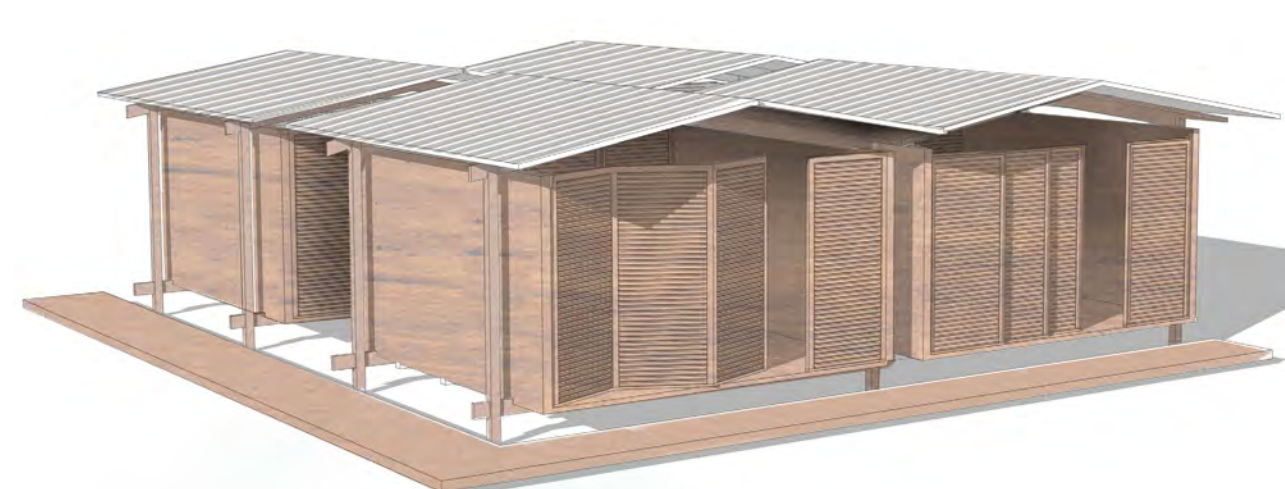
TYP0 2
DOUBLE PANS

TYP0
RETOURNEMENT

TYP0 4
CARBET



1/50



MAISON

MURS:

PARPAING

BRIQUE

OSSATURE BOIS

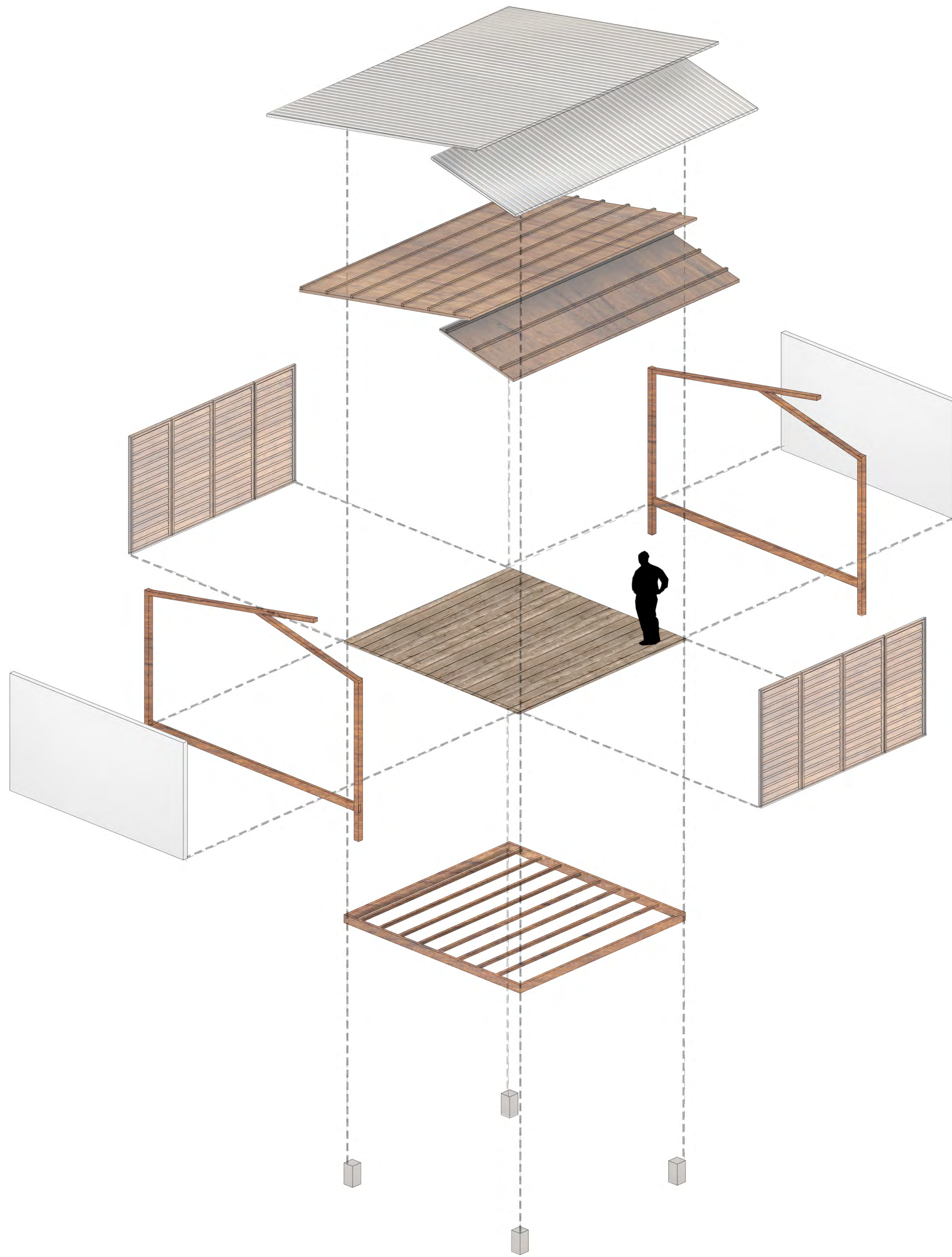
PAROIS AJOUREES:

APPAREILLAGE BRIQUE

PANNEAUX BOIS 1M x 2,20M

CLAUSTRA

APPAREILLAGE BOIS



TPOLOGIES D'OUVERTURES

PANNEAUX BOIS BATTANTS

PANNEAUX BOIS PLIANTS

PANNEAUX BOIS COULISSANTS

PANNEAUX BOIS DEPLIANTS

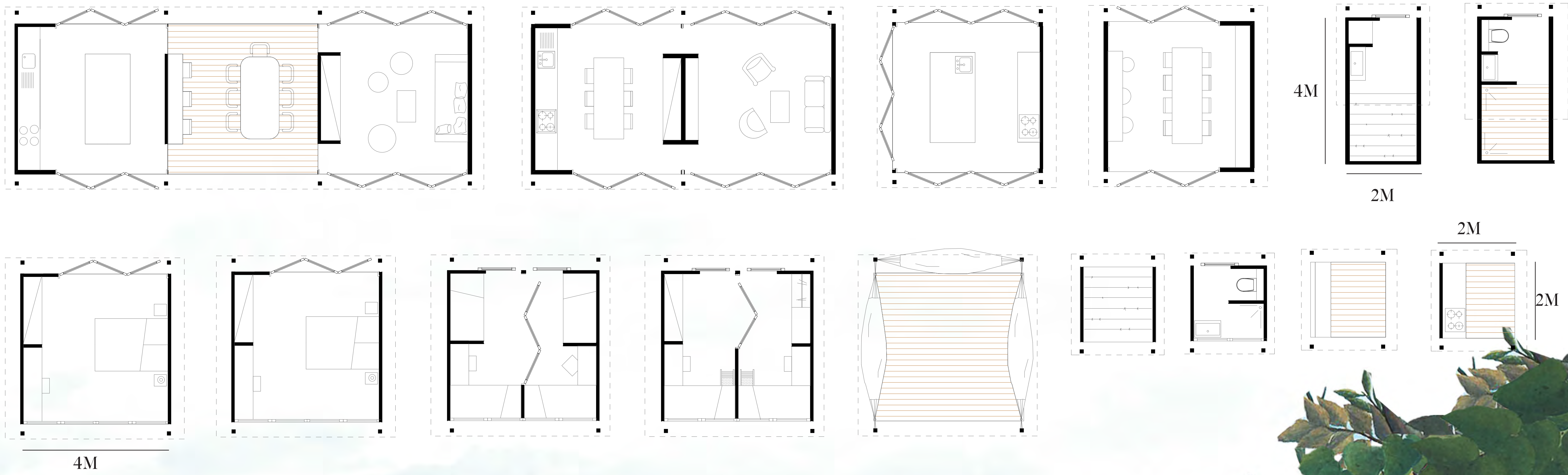
AUTRES:

STRUCTURE BOIS

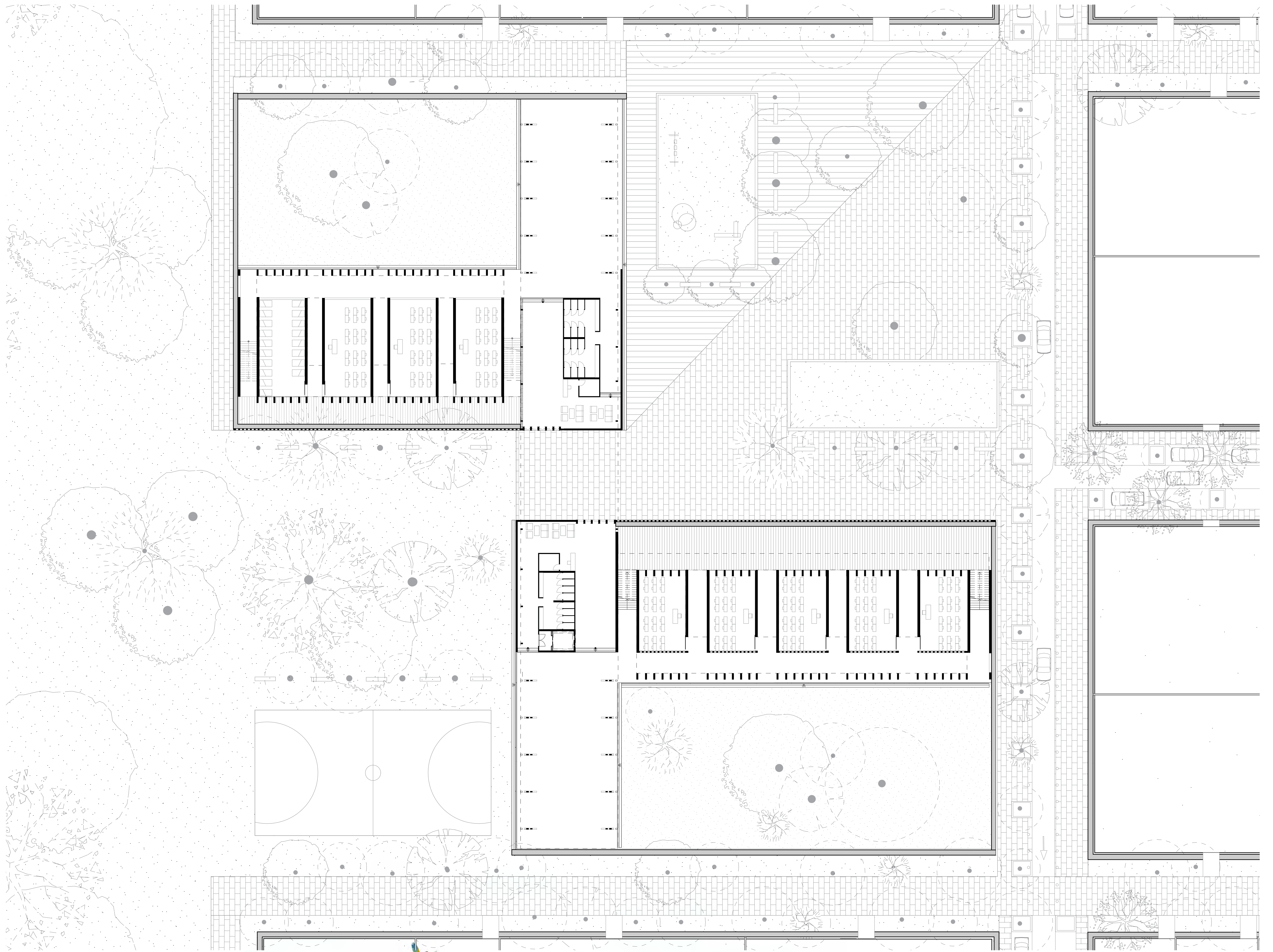
TOLE ONDULEE

?

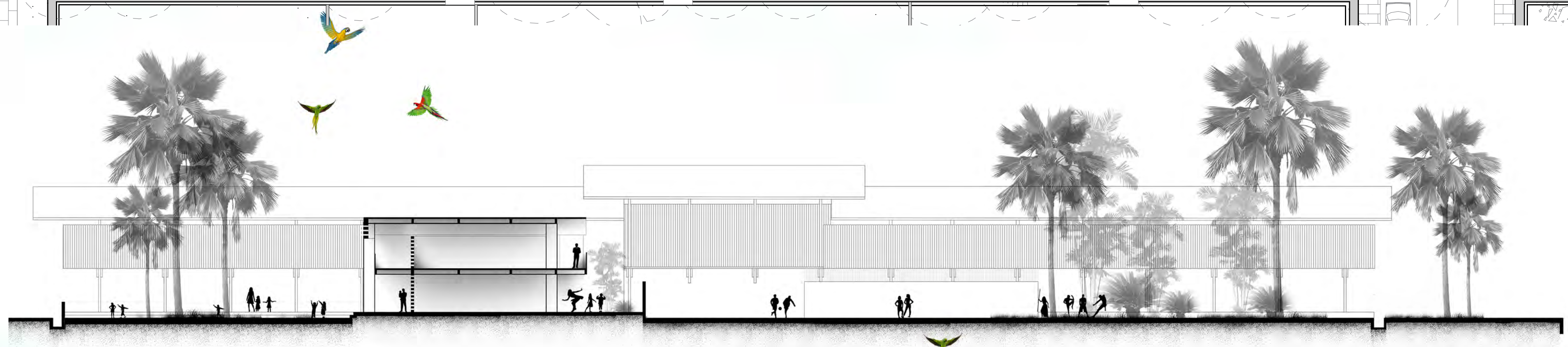
TOUT AUTRE MATERIEL APORTE PAR LES HABITANTS



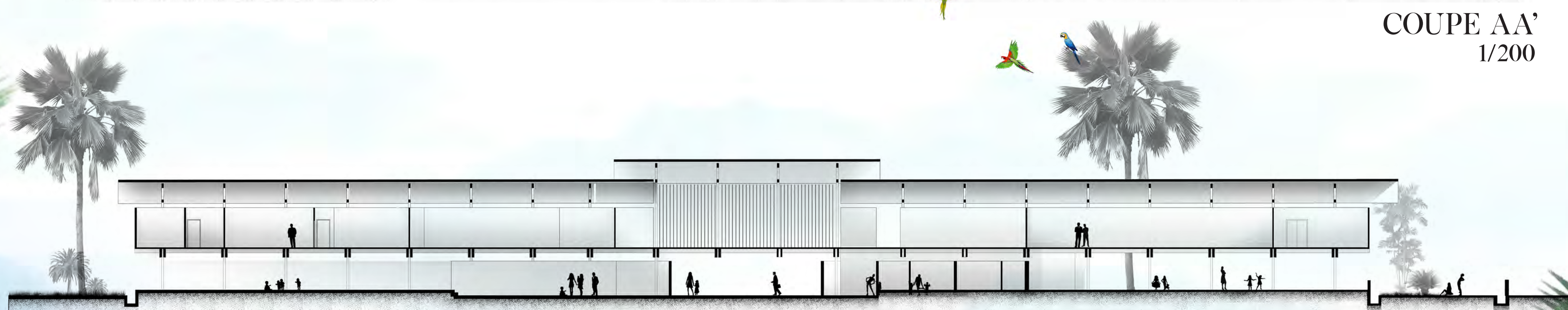
ECOLE



PLAN RDC
1/200



COUPE AA'
1/200



COUPE BB'
1/200



ECOLE

