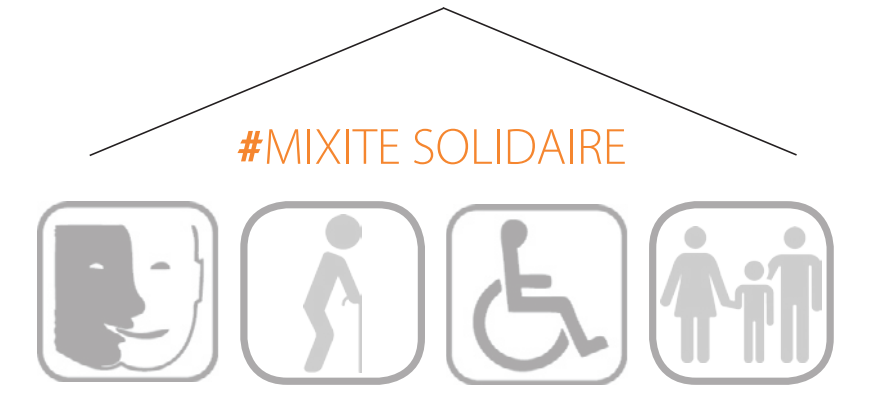
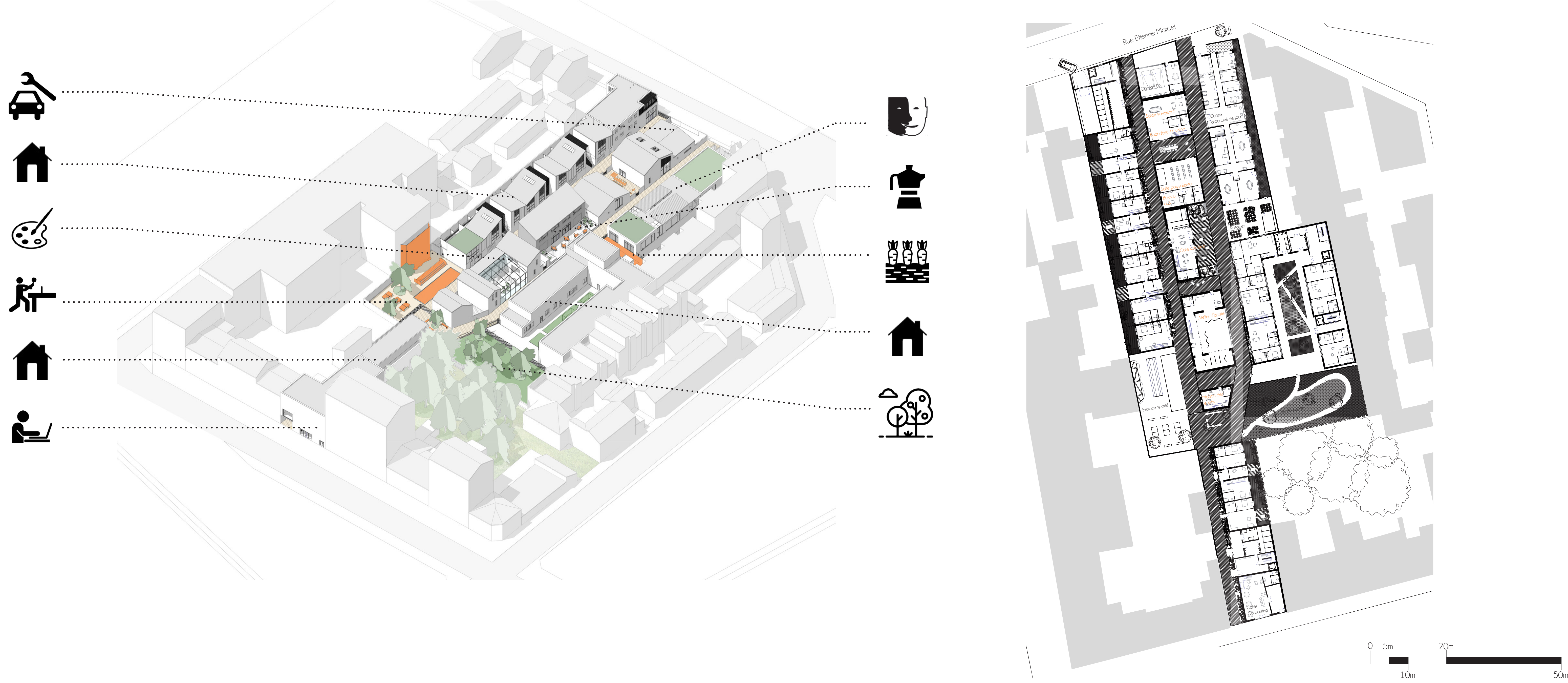


# L'INCLUSION PAR L'HABITAT : AU DELA DES MURS



Habiter / Partager / Accueillir

Plan RDC - 1.500

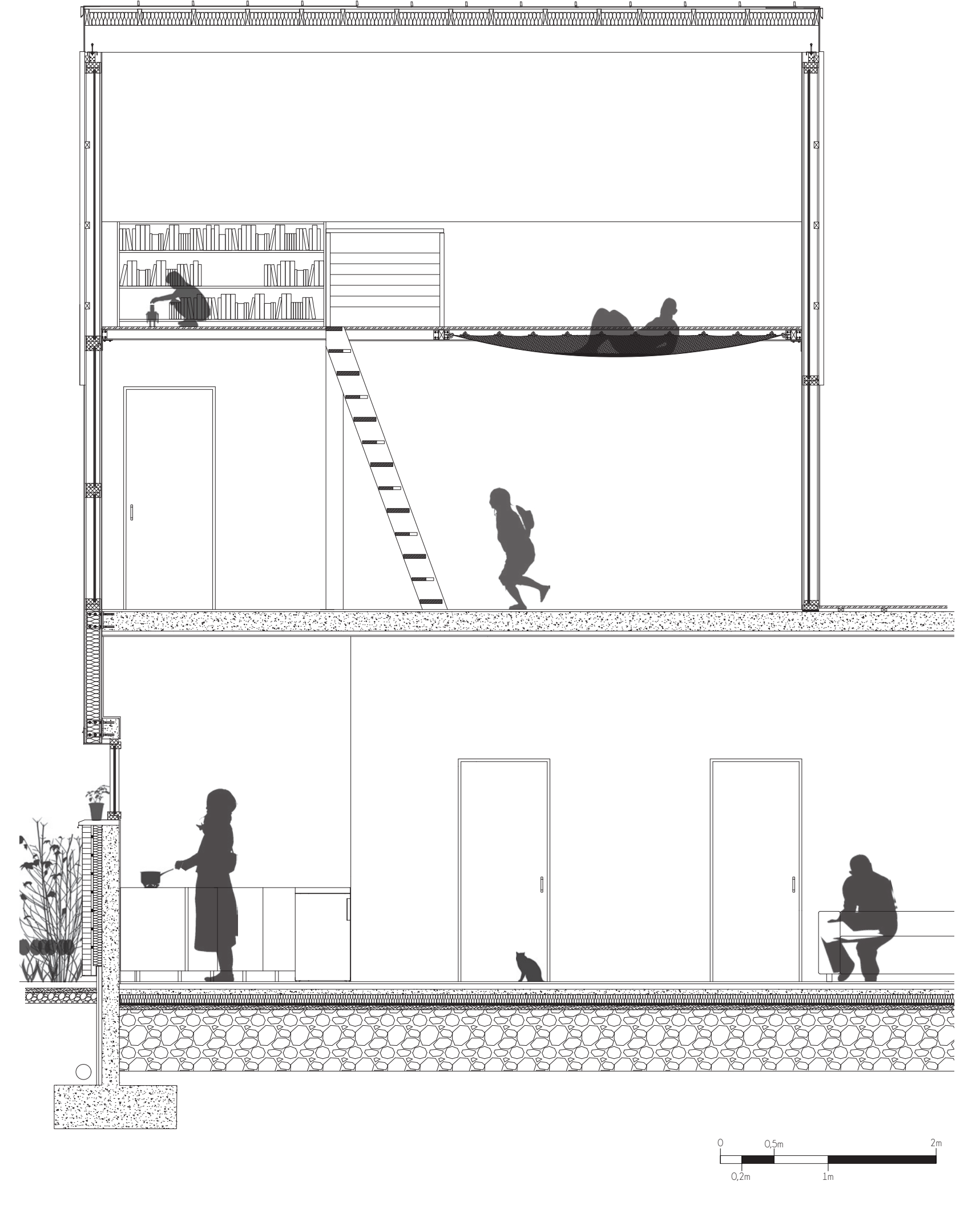


## HABITER ET PARTAGER DES LOGEMENTS AU CARACTÈRE FAUBOURIEN

Élévation Est FF' - 1.200



Coupe H'H Transversale



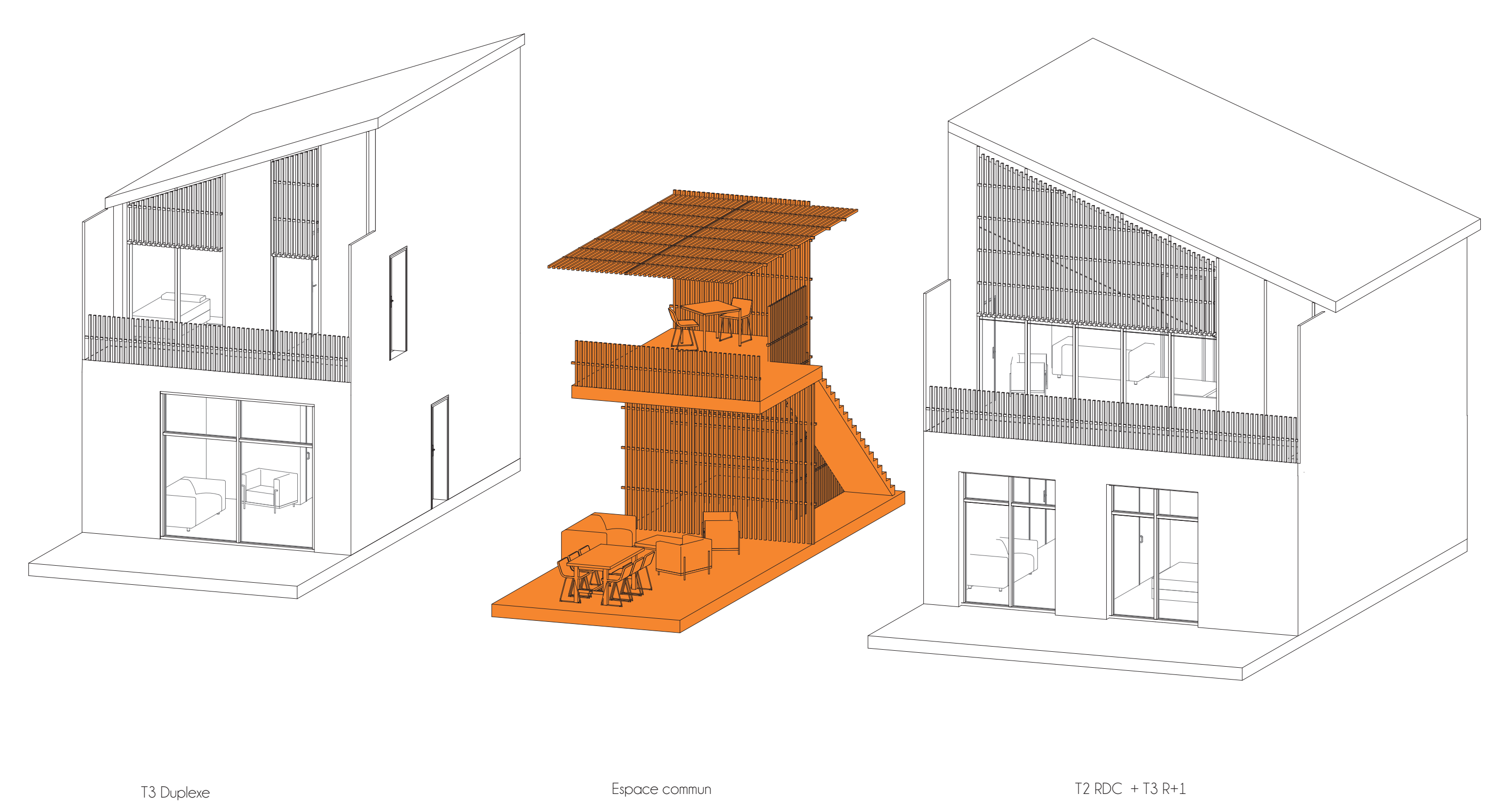
Coupe GG' longitudinale - 1.200



Vue depuis l'entrée sud de la venelle privée

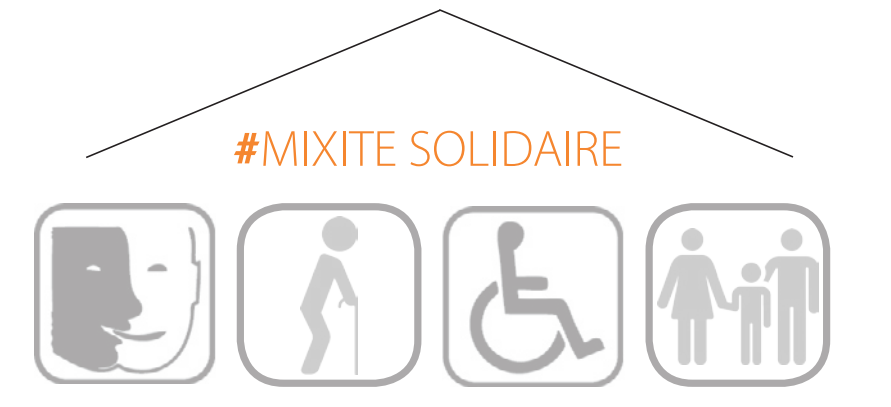


Axonométrie éclatée

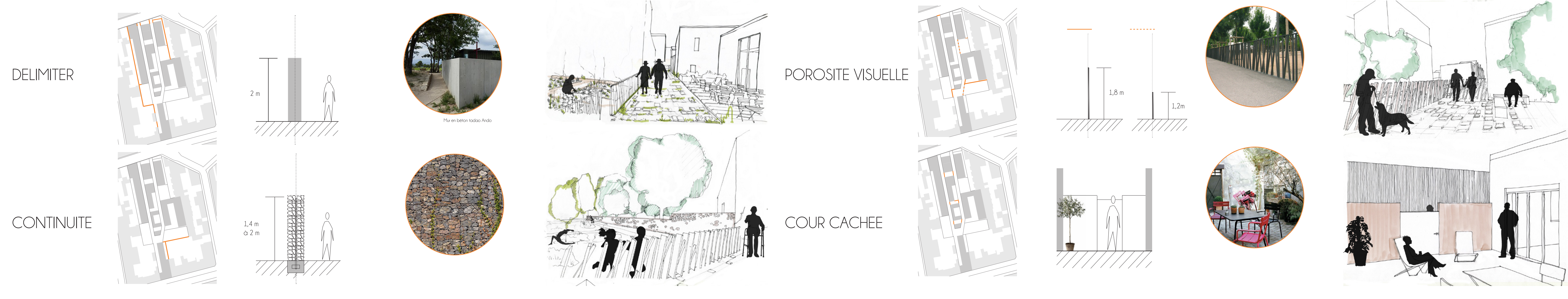




# L'INCLUSION PAR L'HABITAT : AU DELA DES MURS



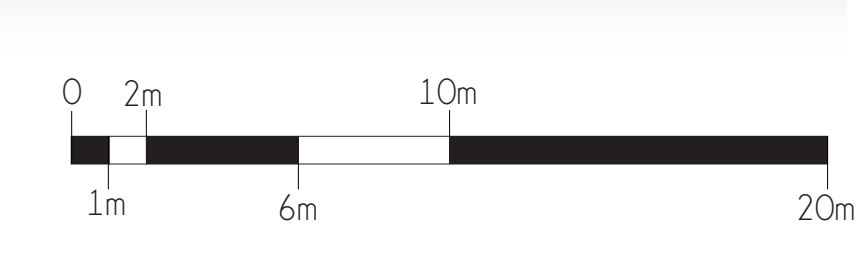
## Passage du public au privé



## Vue espace partagé

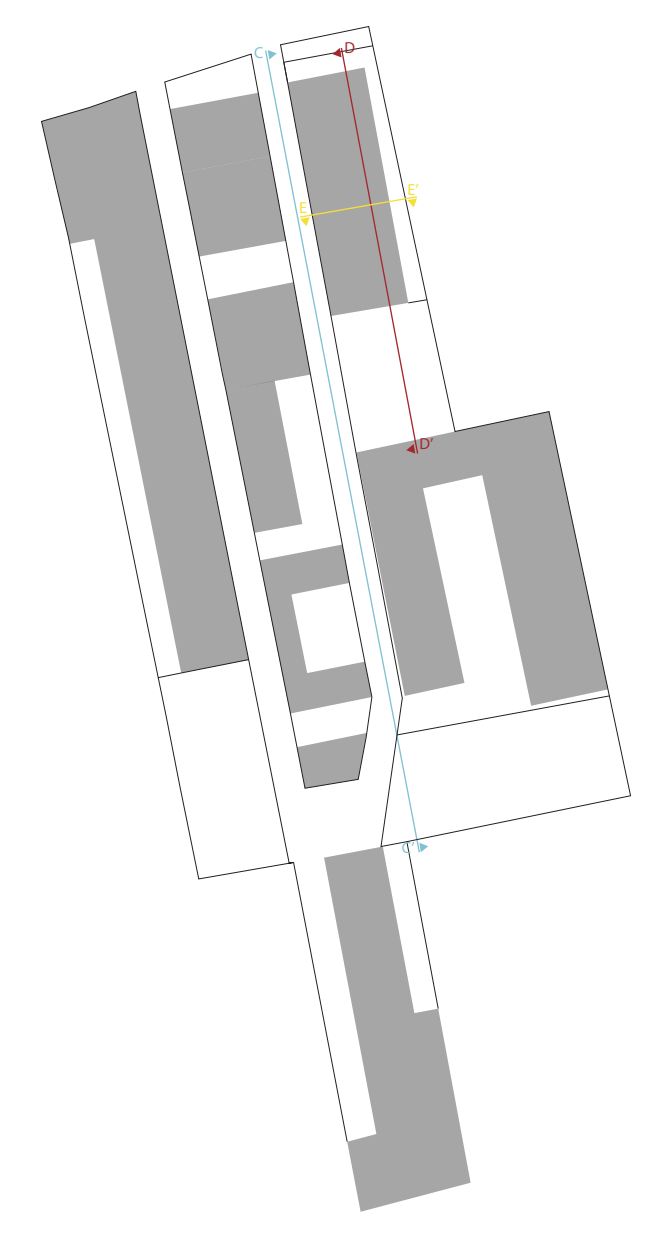
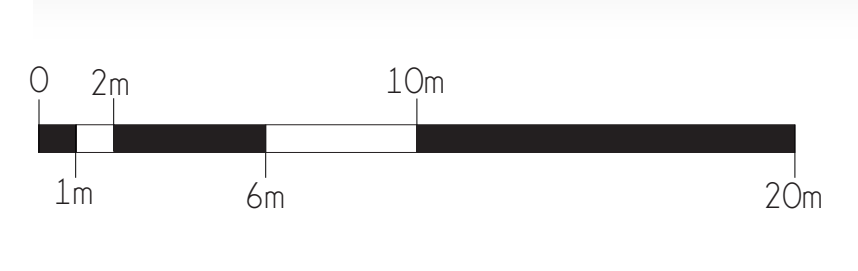
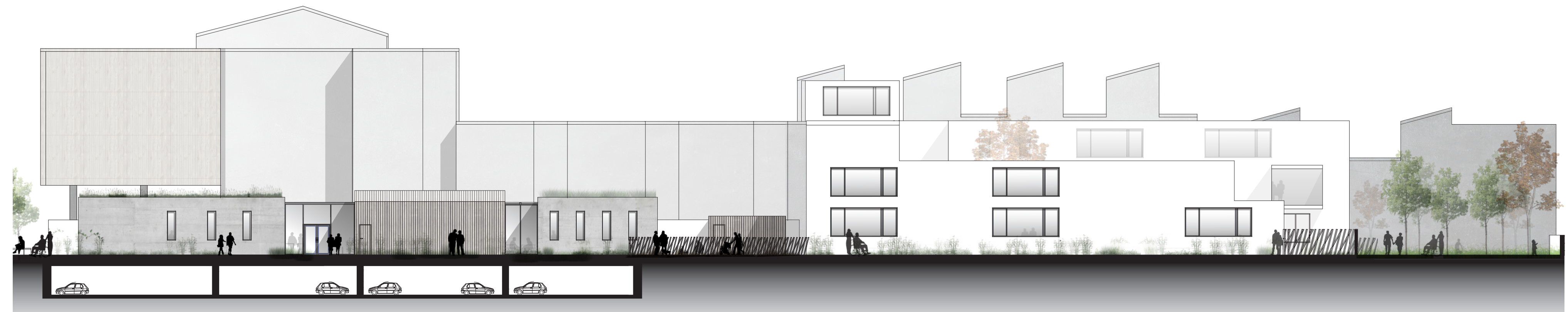


## Élévation - Venelle espaces partagés - 1.200

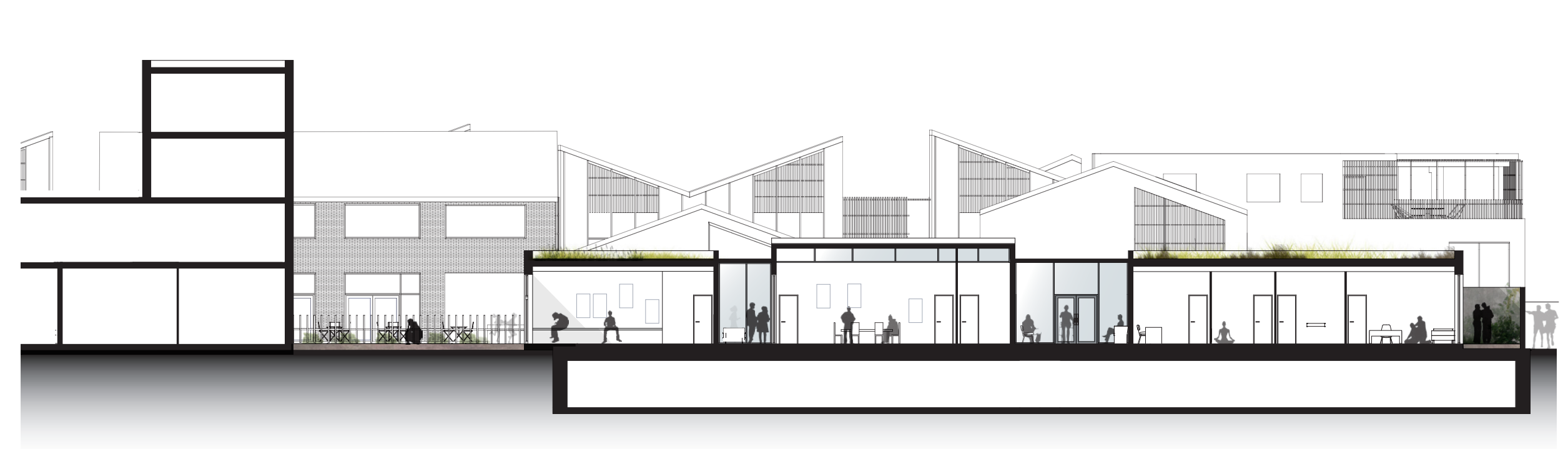


## UN CENTRE D'ACCUEIL DE JOUR POUR UNE MIXITÉ PLUS FORTE

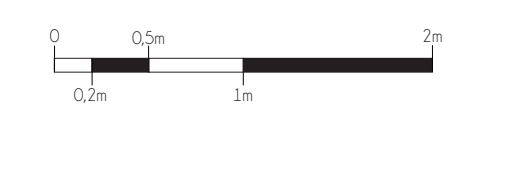
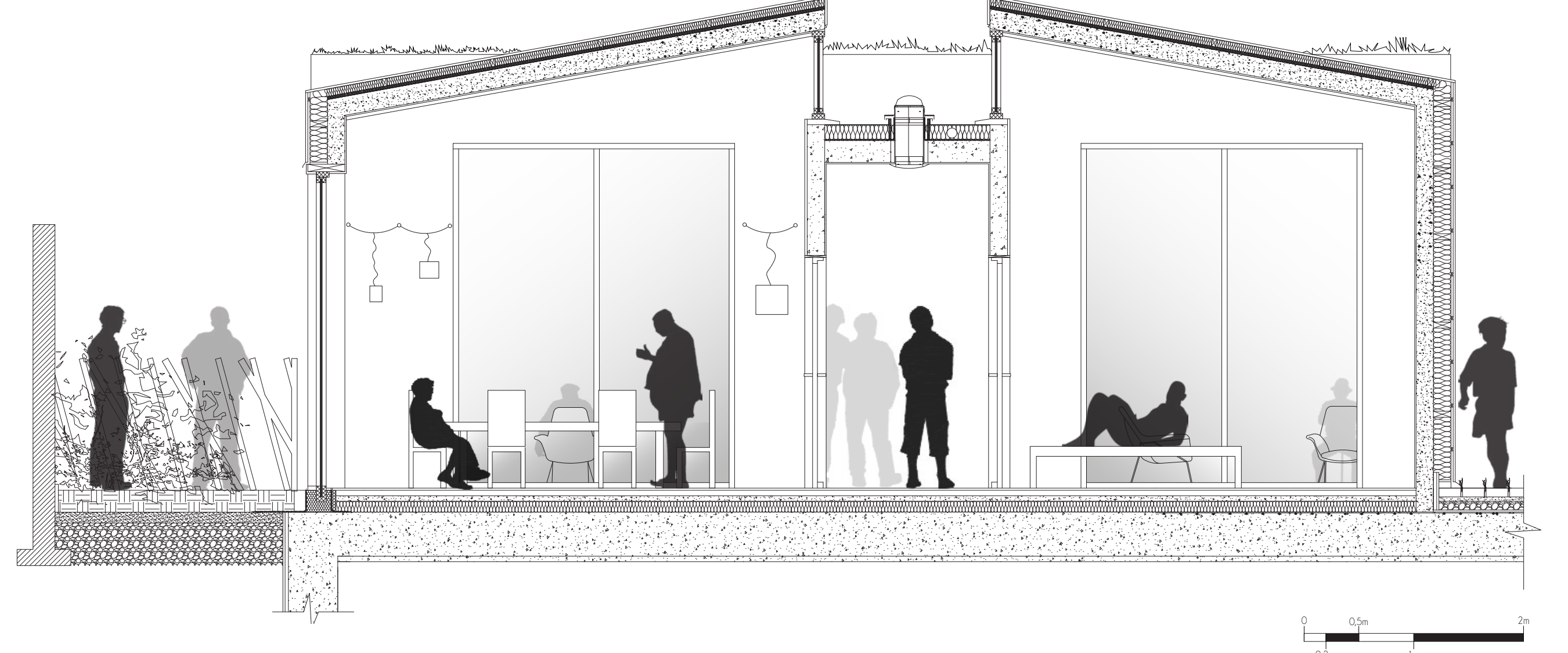
### Élévation Ouest CC' - 1.200



### Coupe DD' longitudinale - 1.200



### Coupe EE' Transversale



### Vue depuis la venelle, entrée rue Etienne Marcel



### Axonométrie éclatée

