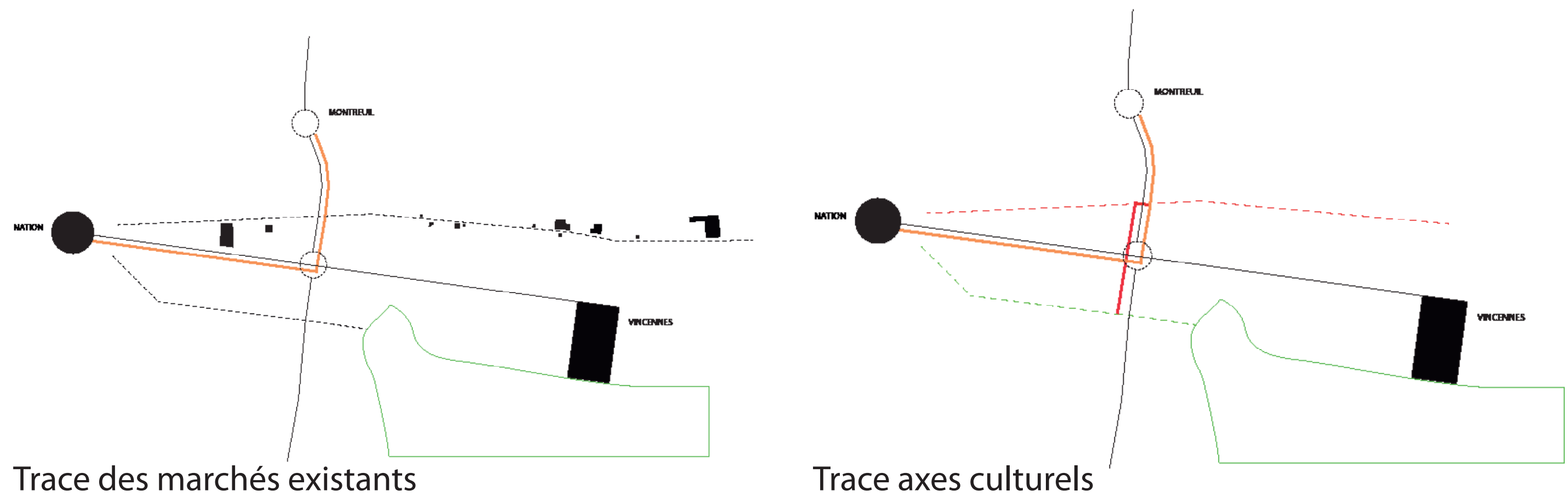


FRANCHIR LA PORTE DE VINCENNES



Trace des marchés existants

Trace axes culturels

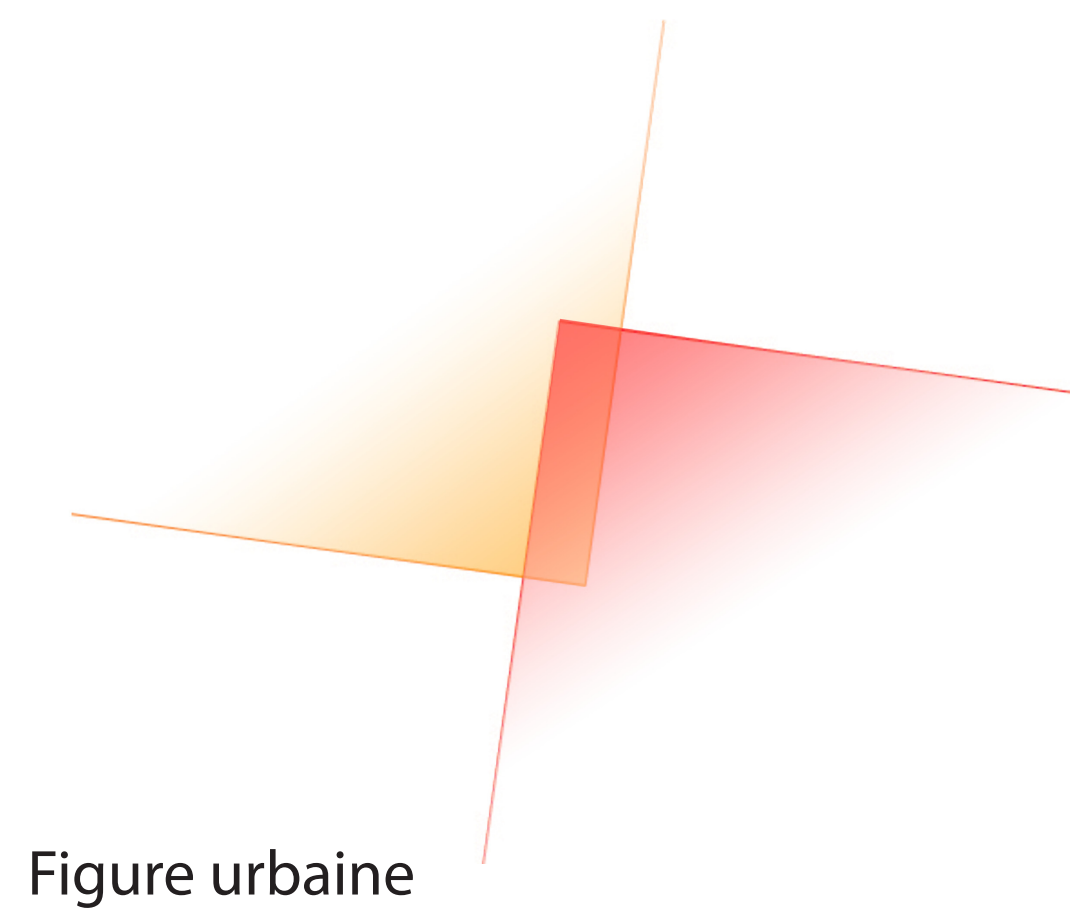
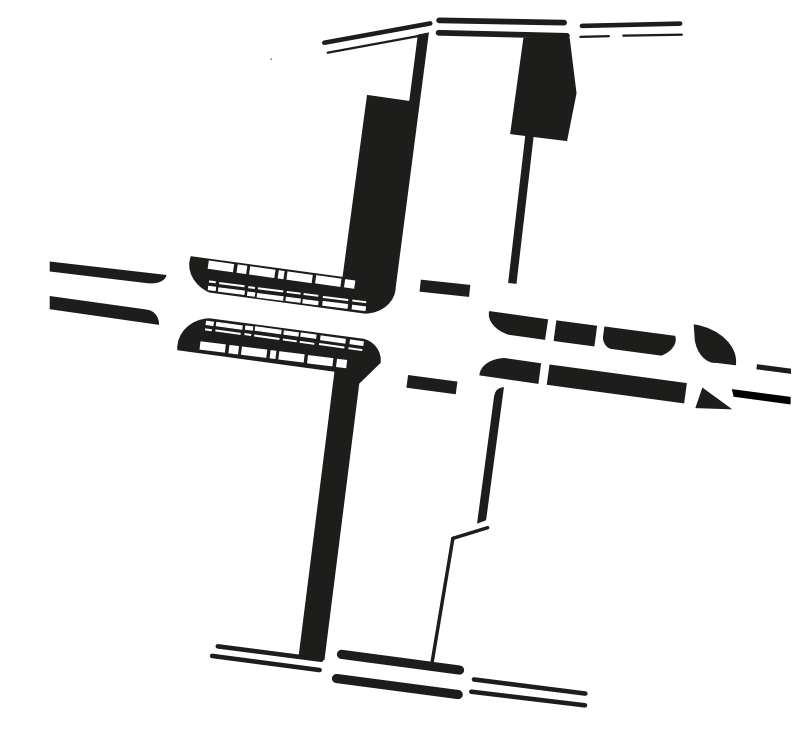
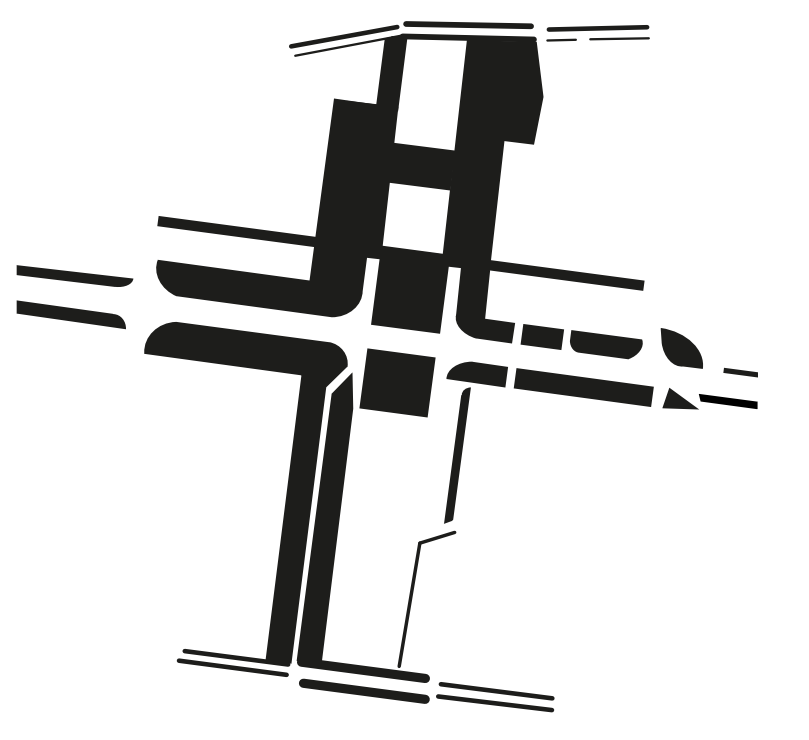


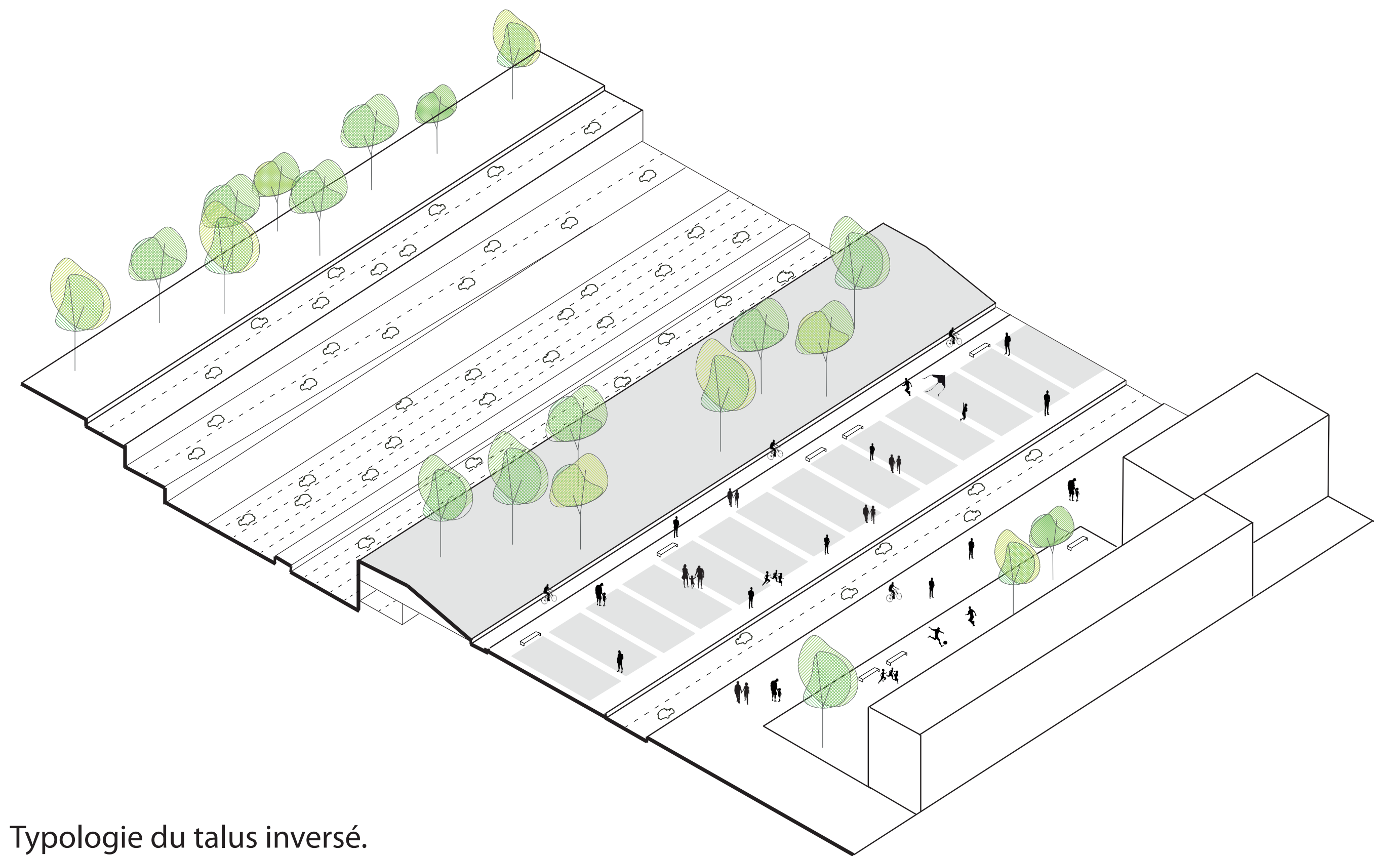
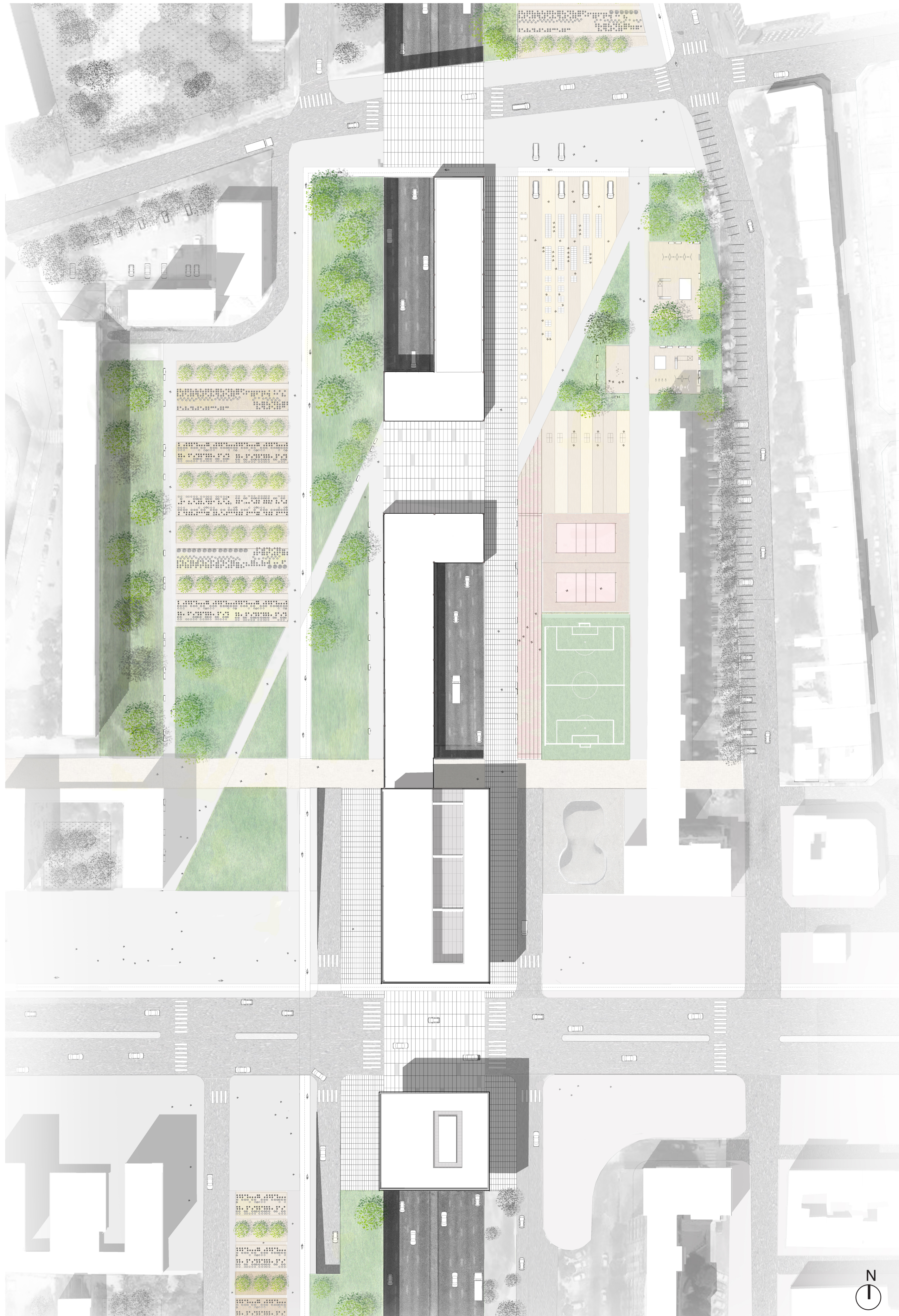
Figure urbaine



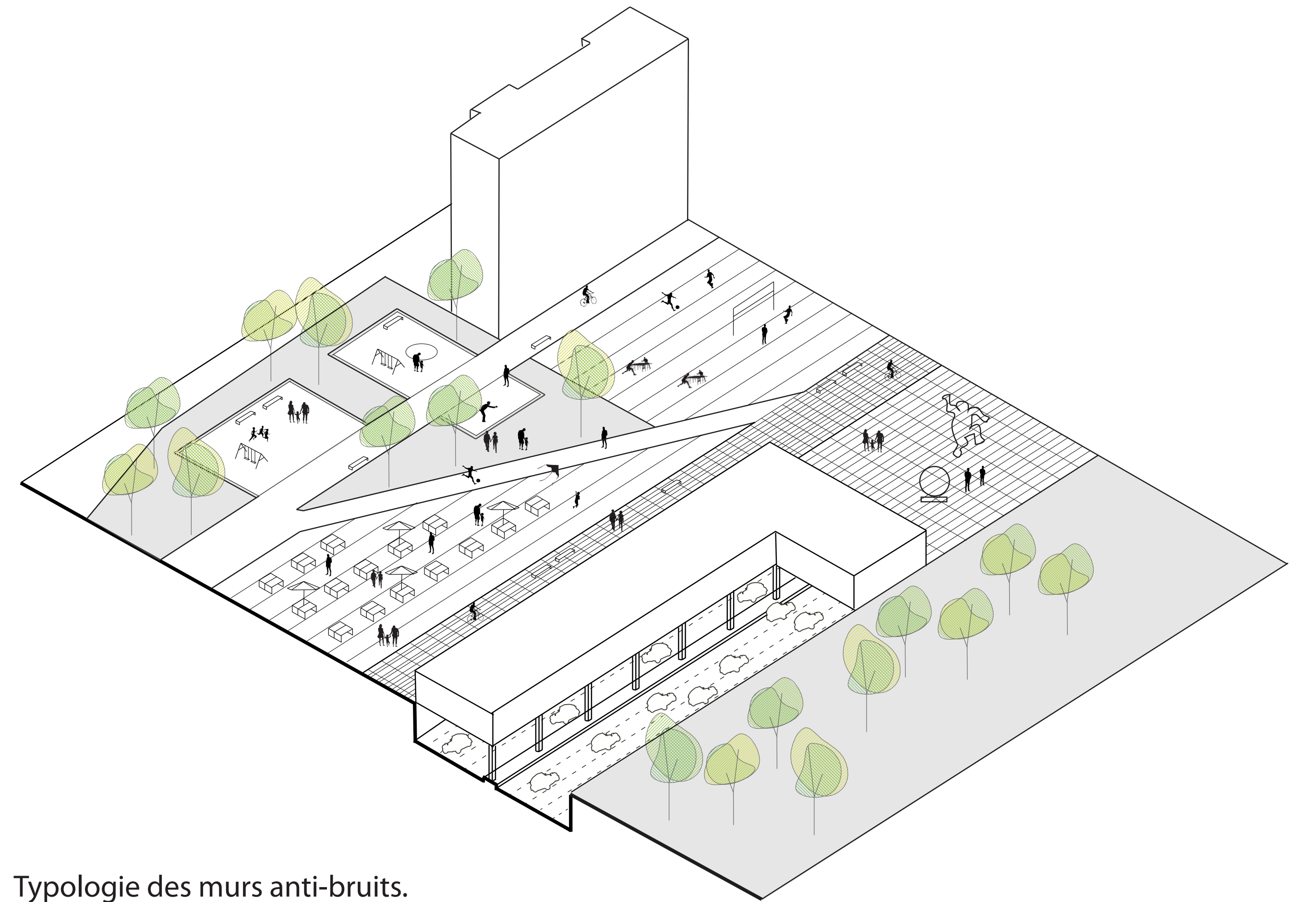
Sol existant



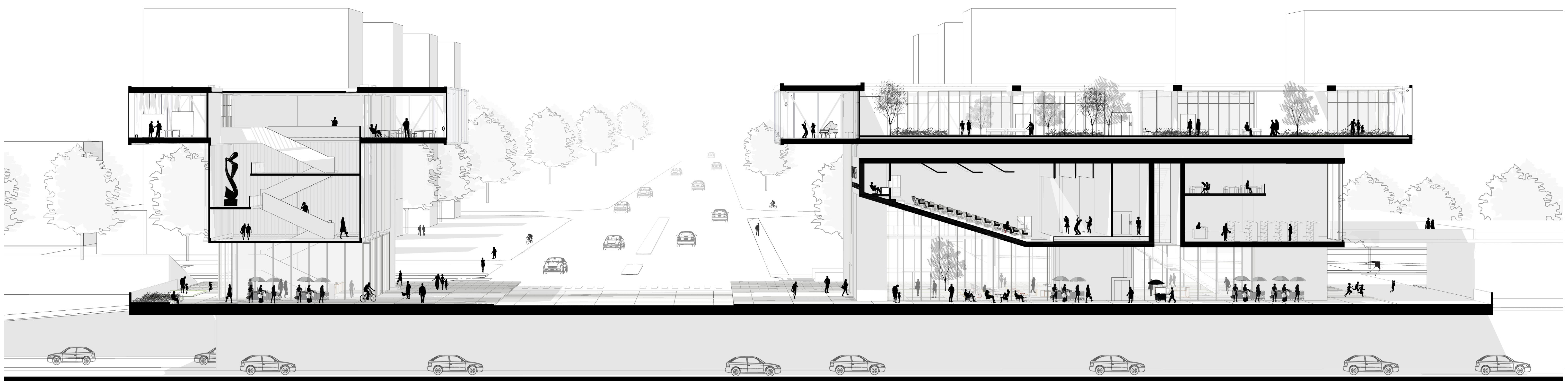
Sol projeté



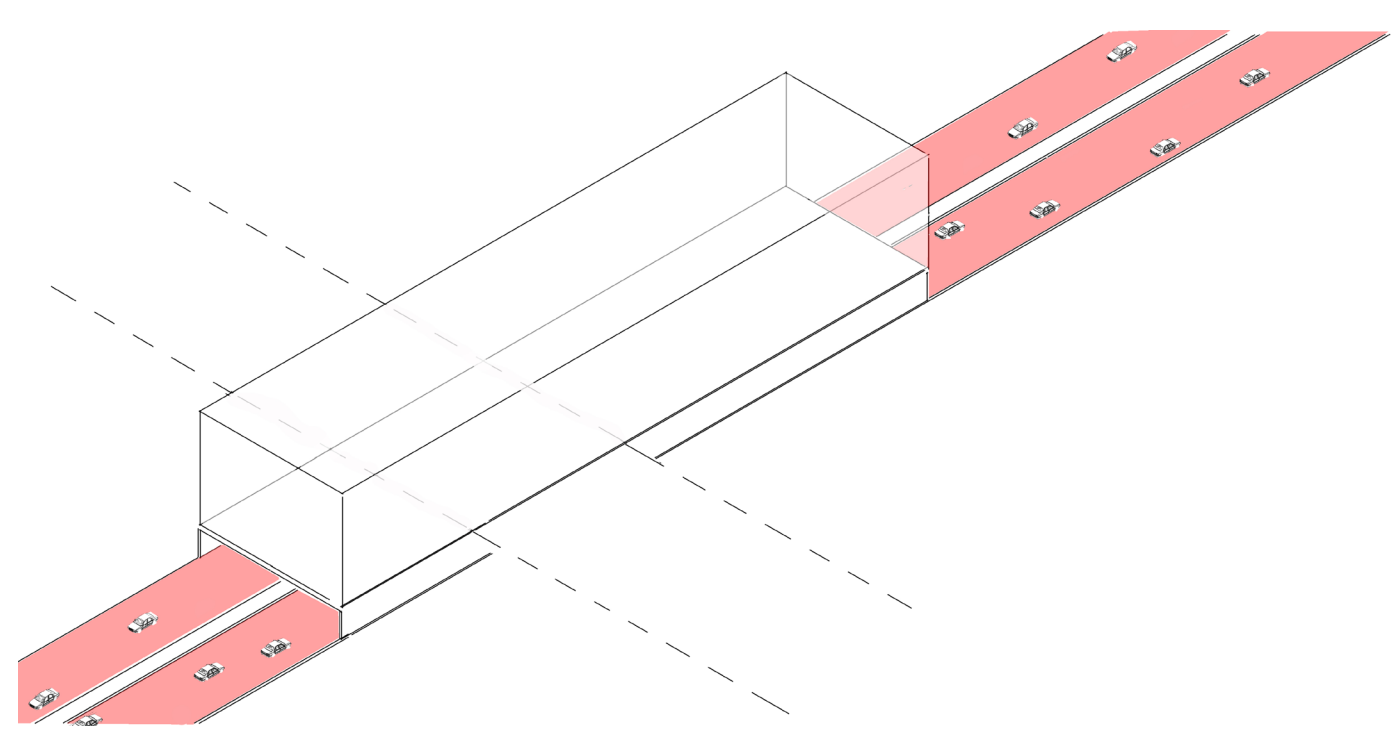
Typologie du talus inversé.



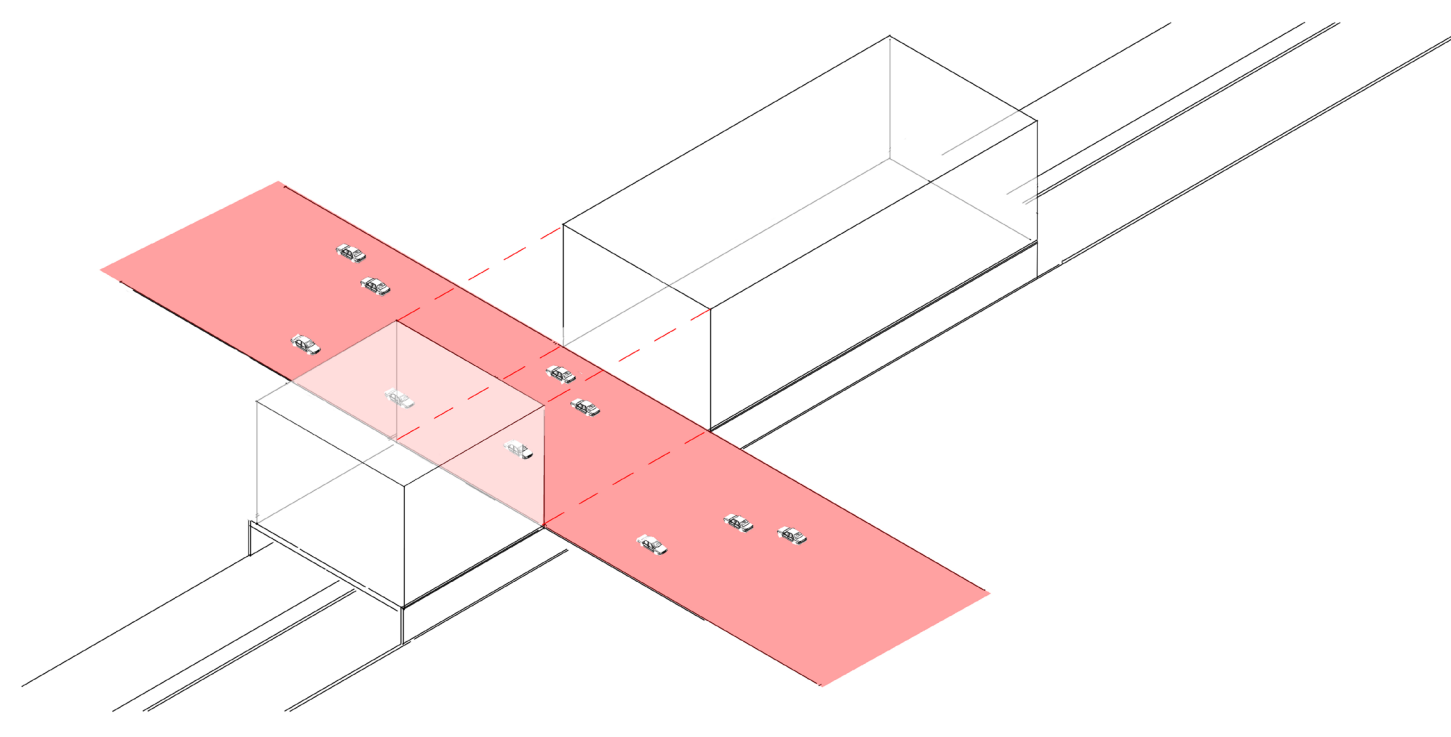
Typologie des murs anti-bruits.



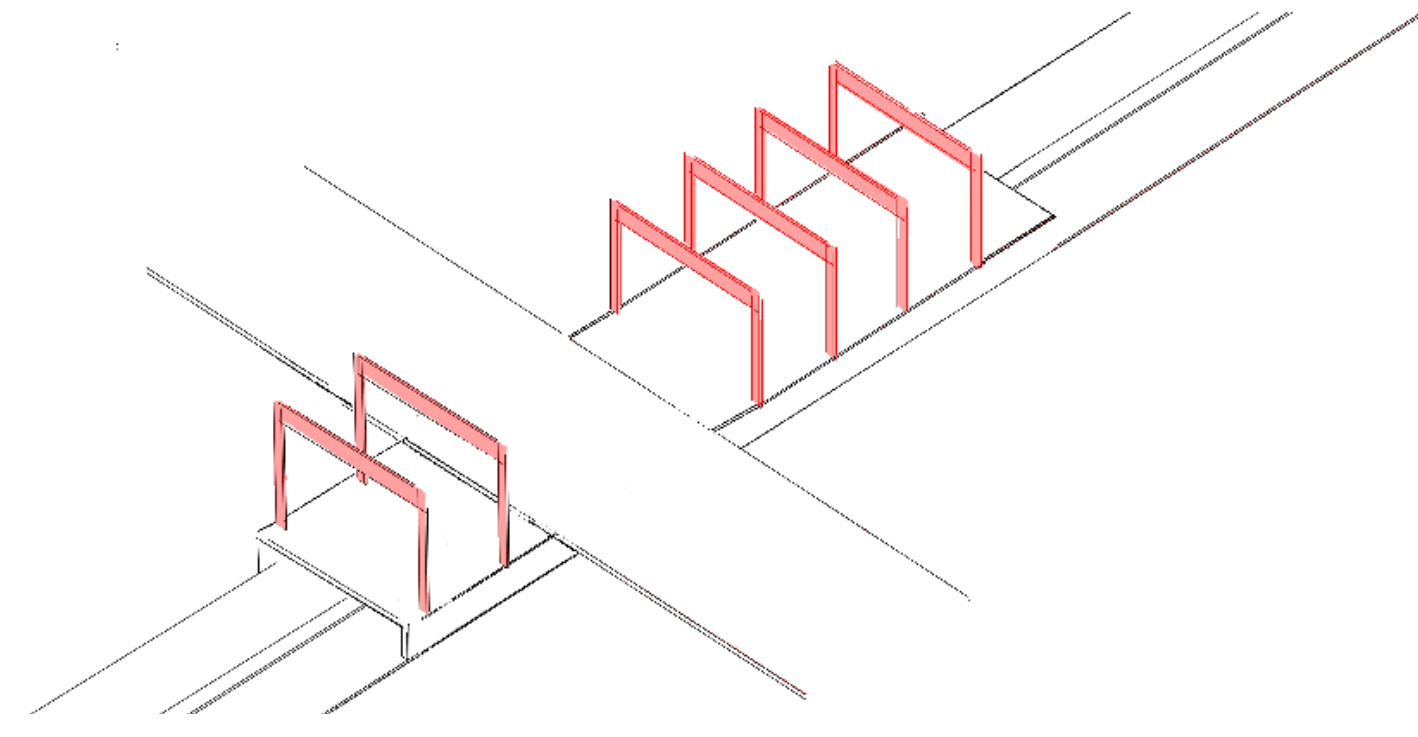
Coupe perspective longitudinale 1/200e.



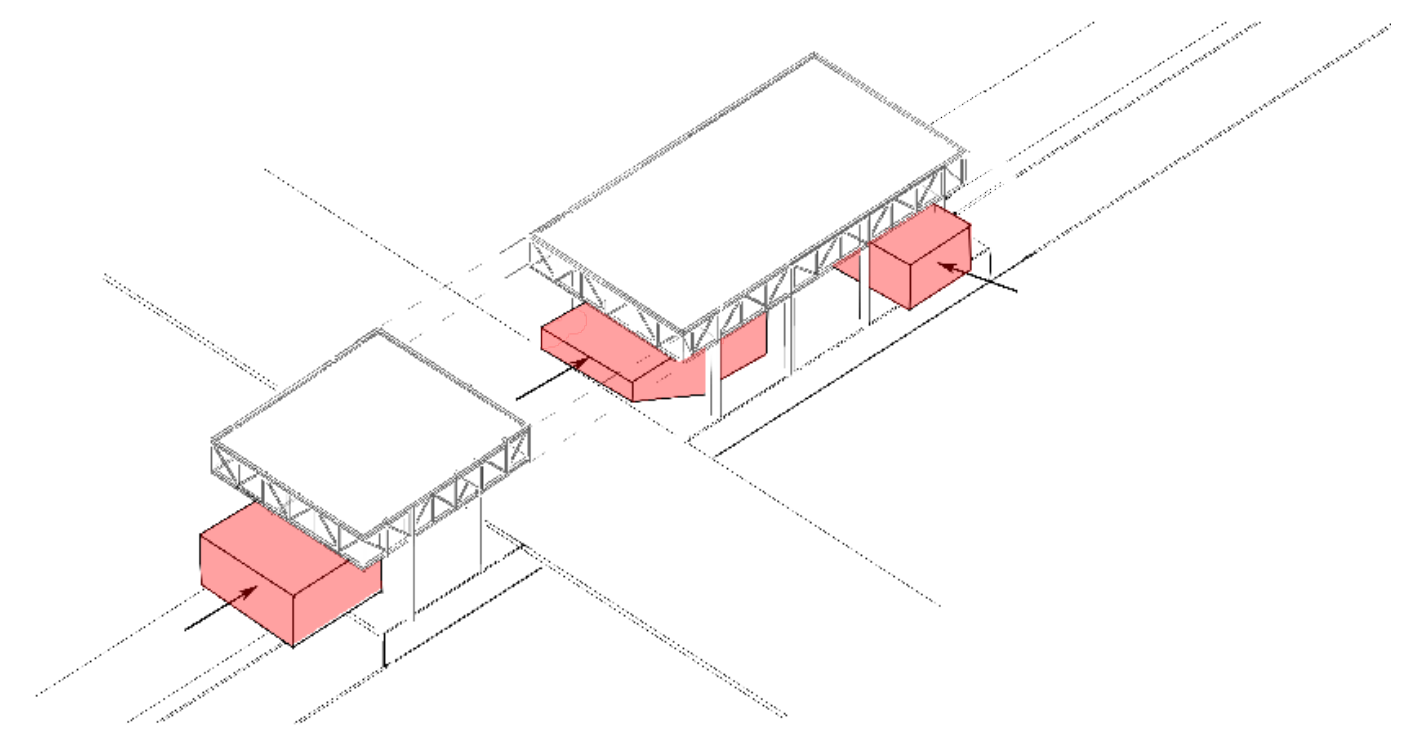
1. Implantation sur le Périphérique.



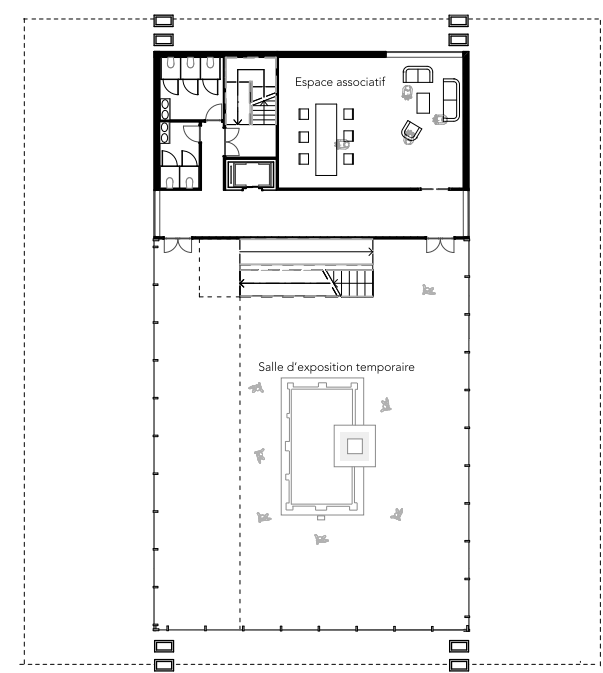
2. Division du volume par le Cours de Vincennes.



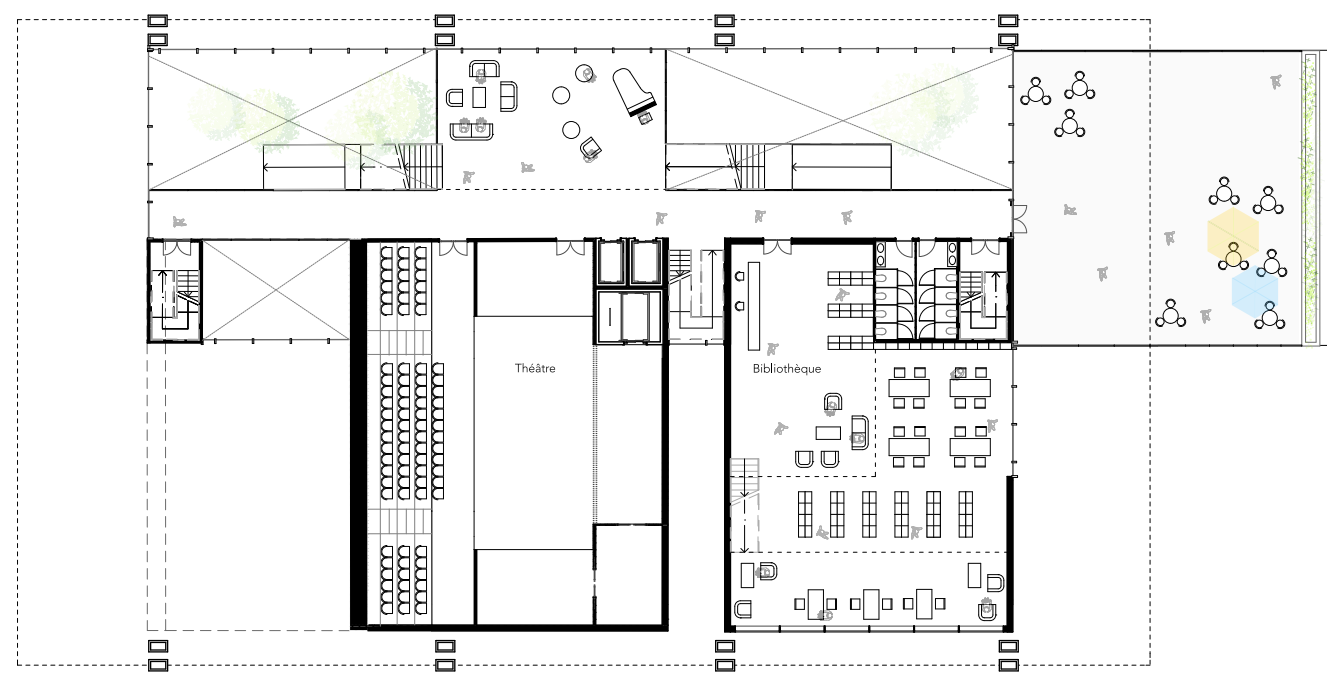
3. Structure à portiques : RDC poreux et plan libre.



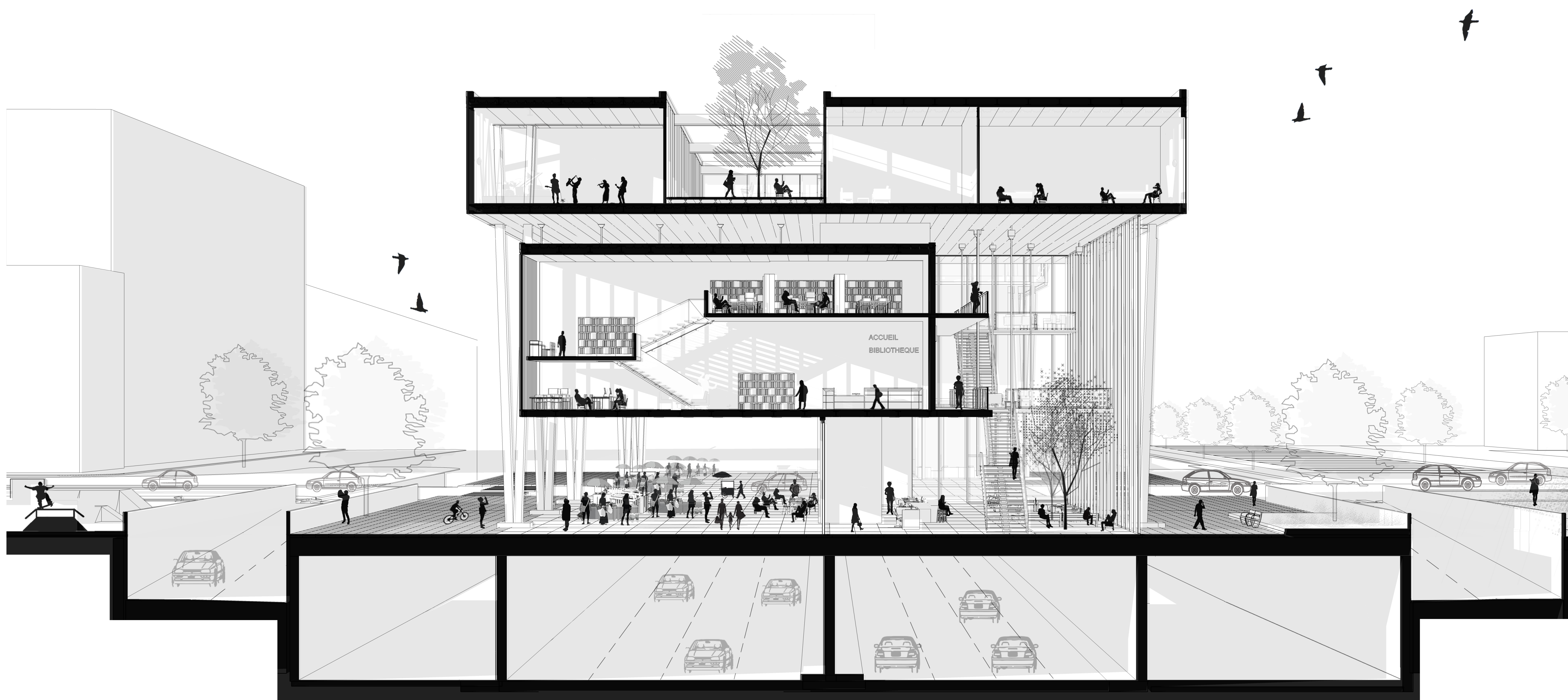
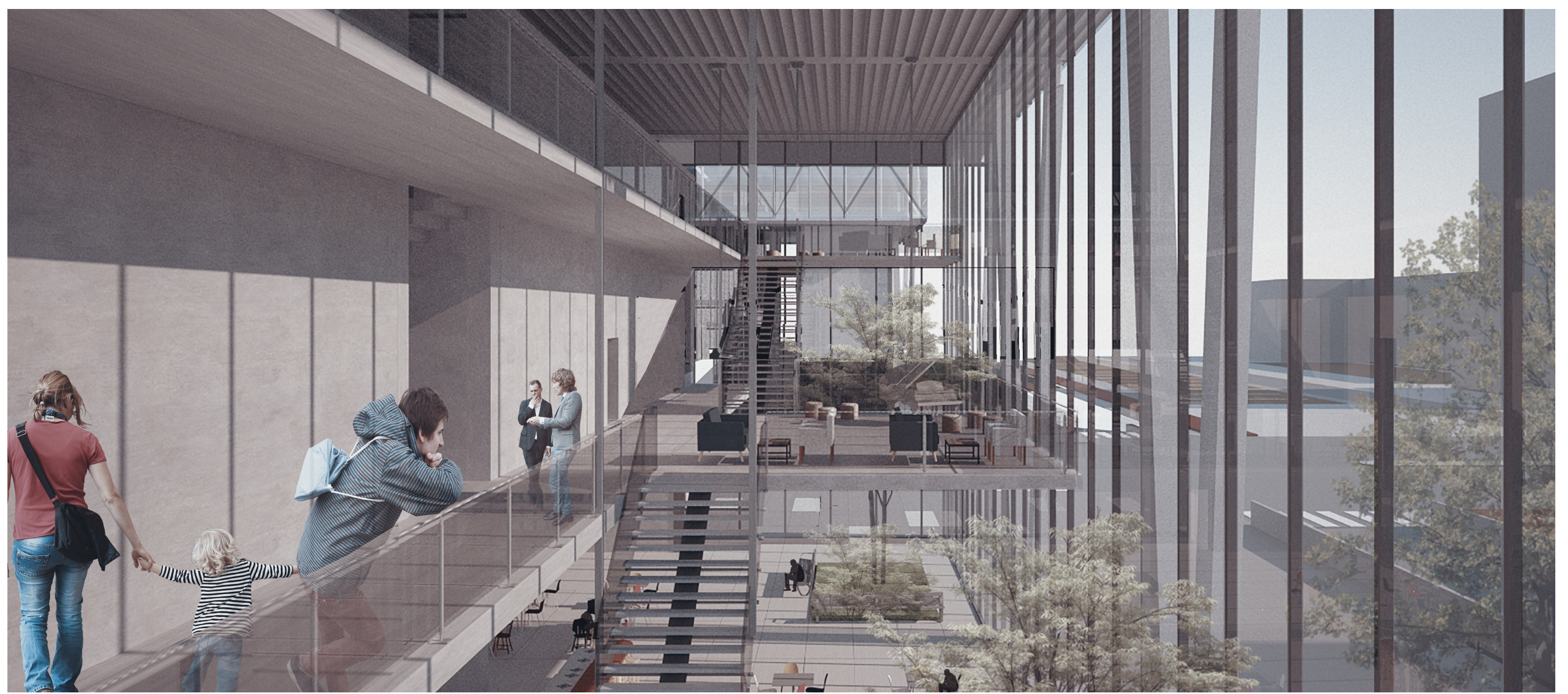
4. Volumes suspendus amovibles.



R+1 1/500e.



RDC 1/500e.



Coupe perspective transversale 1/100e.