

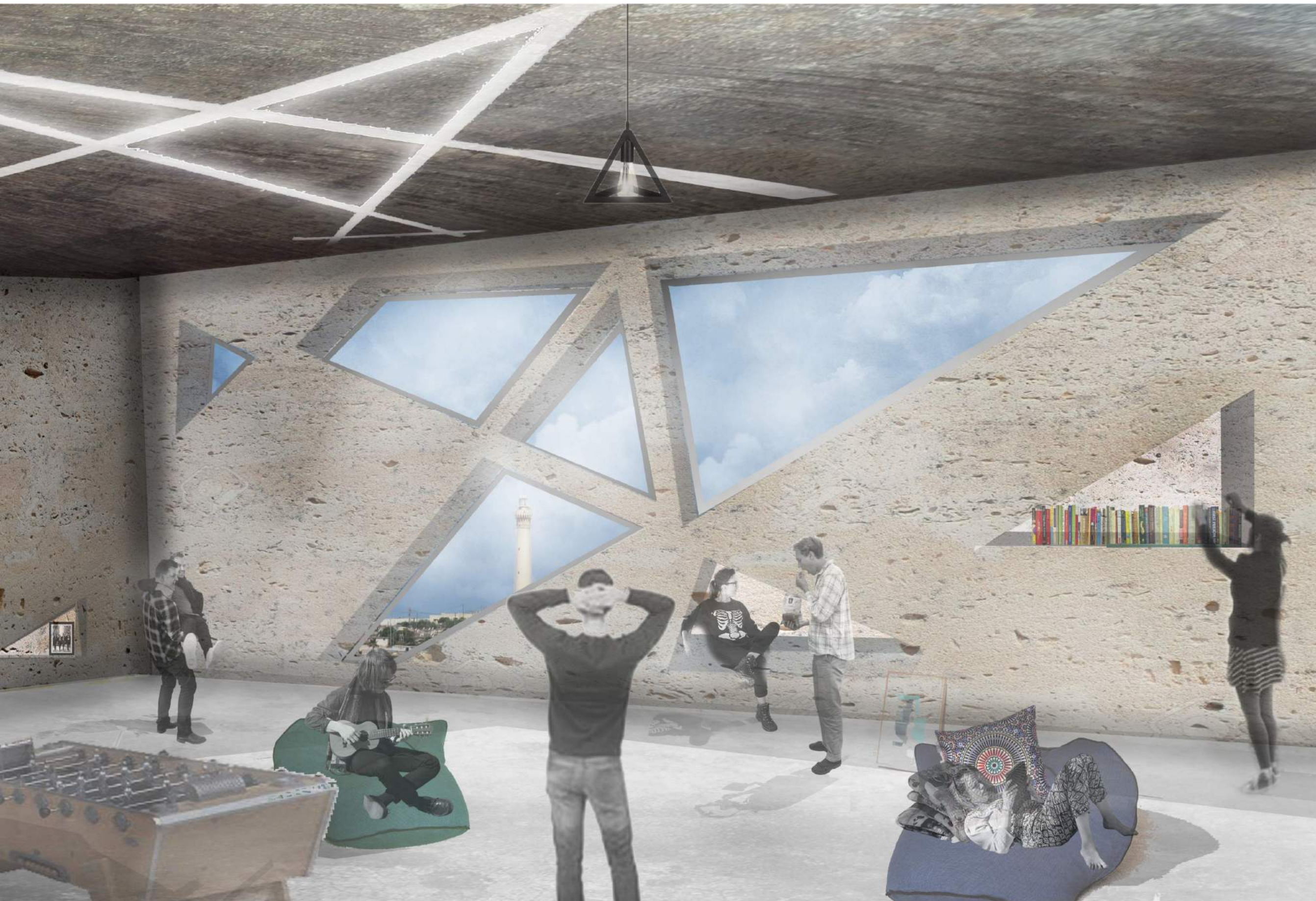
Le Triacanthe, une école d'Agronomie le long de la baie d'El Hank



Spacialité intérieure

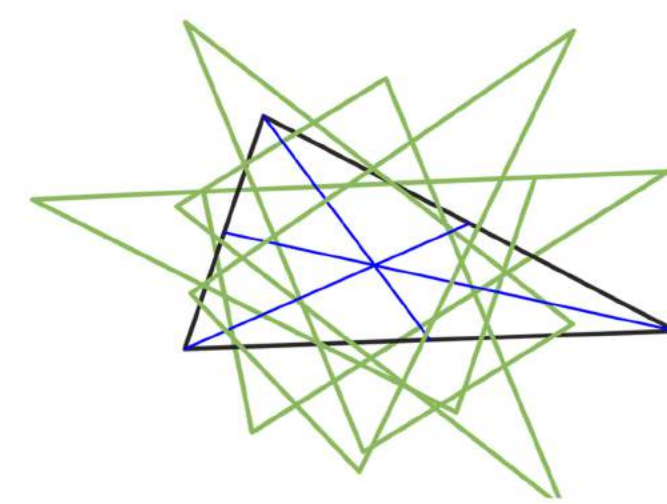


Ombrières génératrices d'ambiances

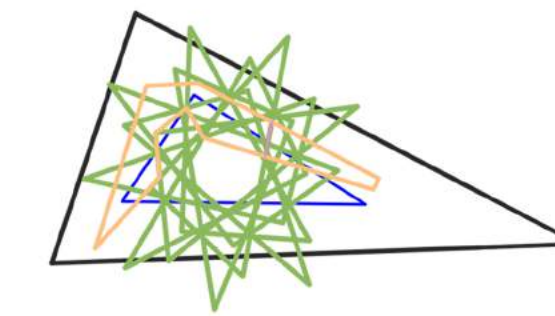
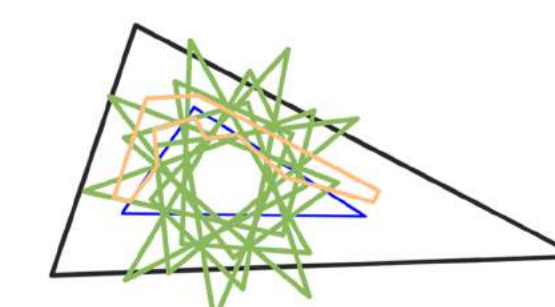
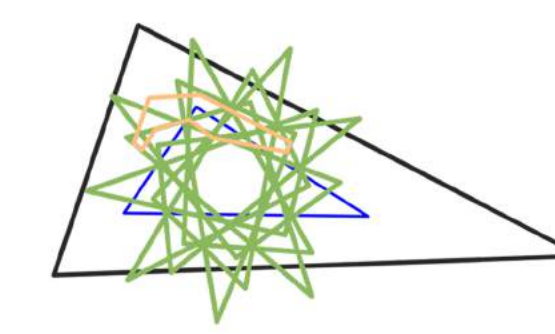
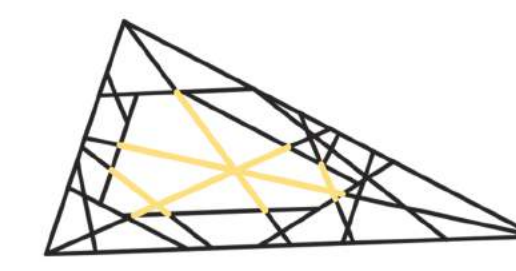


Vue sur le phare d'El Hank

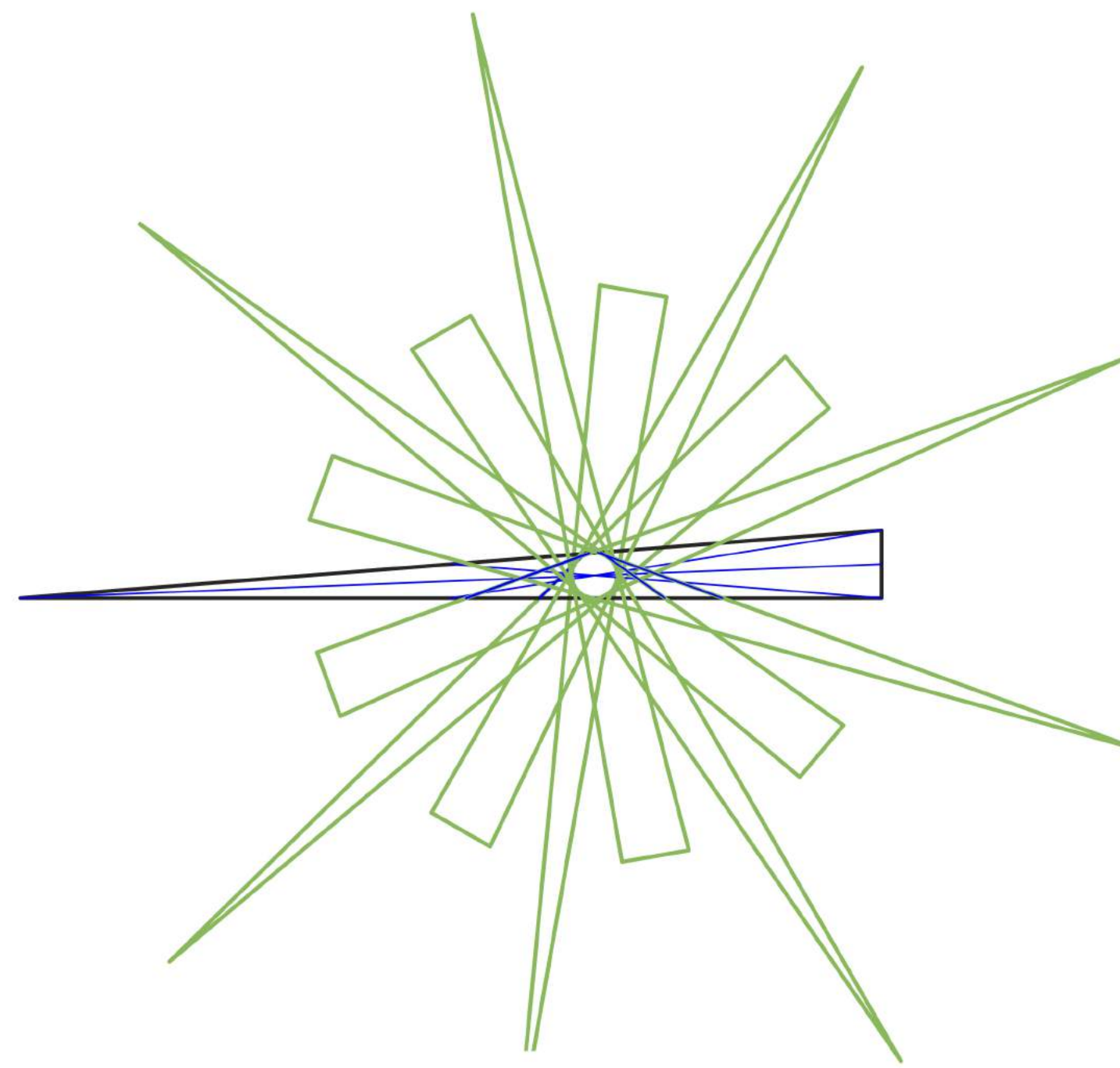
Le Zellij-Géométrie à trois échelles



A l'échelle de la toiture

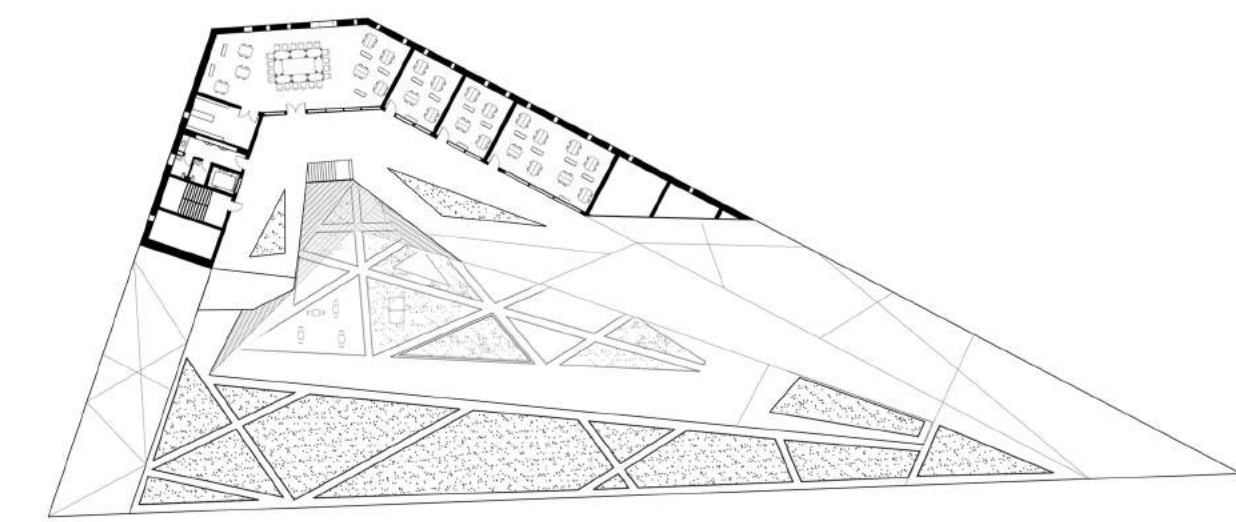


A l'échelle du patio

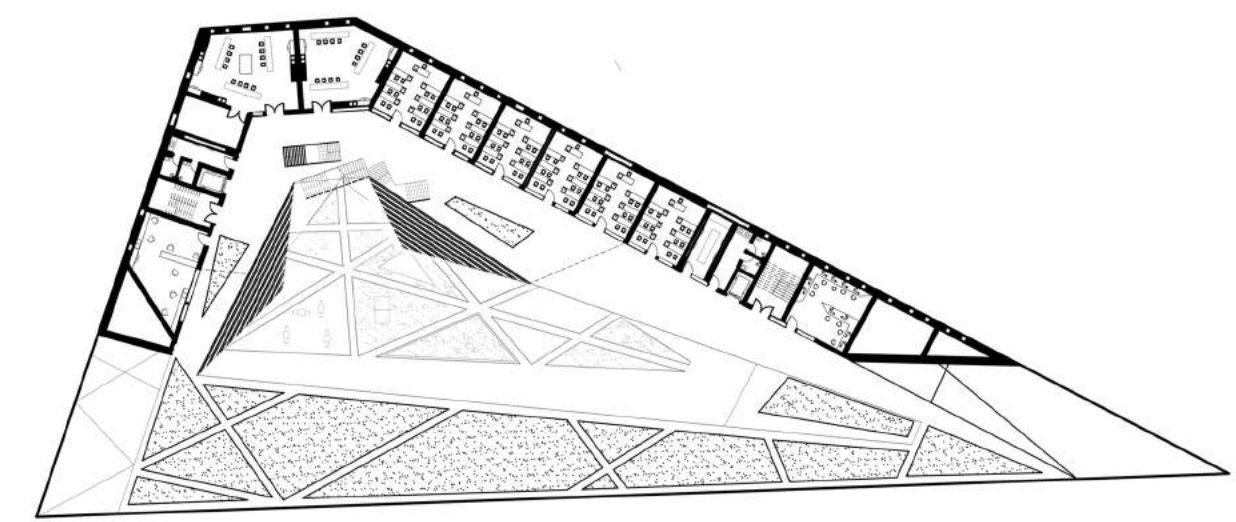


A l'échelle des façades

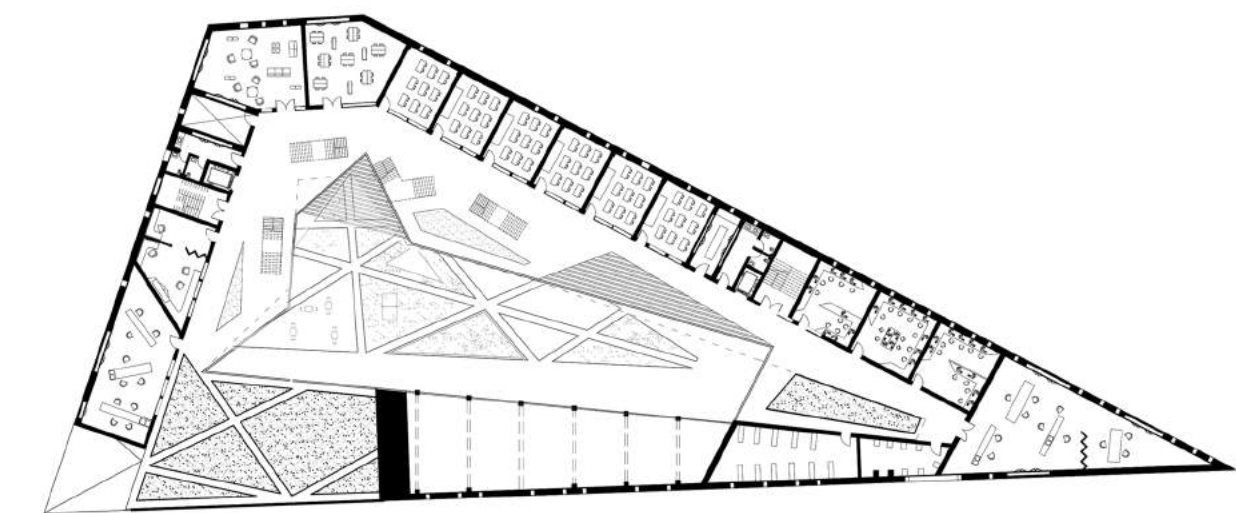
Un plateau/Un usage



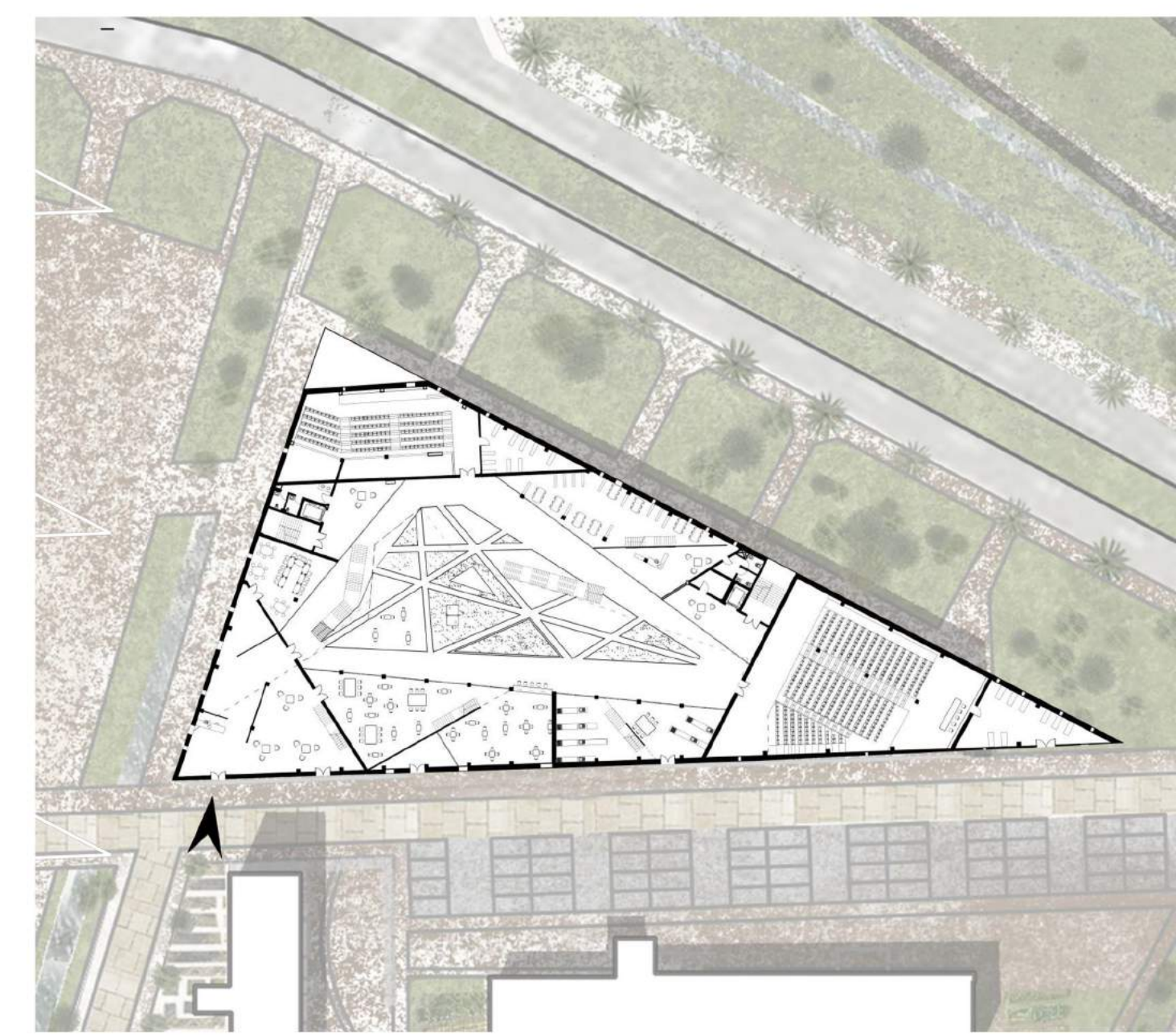
Plan R+3/ Echange



Plan R+2/ Expérimentation



Plan R+1/ Etude



Plan RDC

Différentes hauteurs pour diverses ambiances

