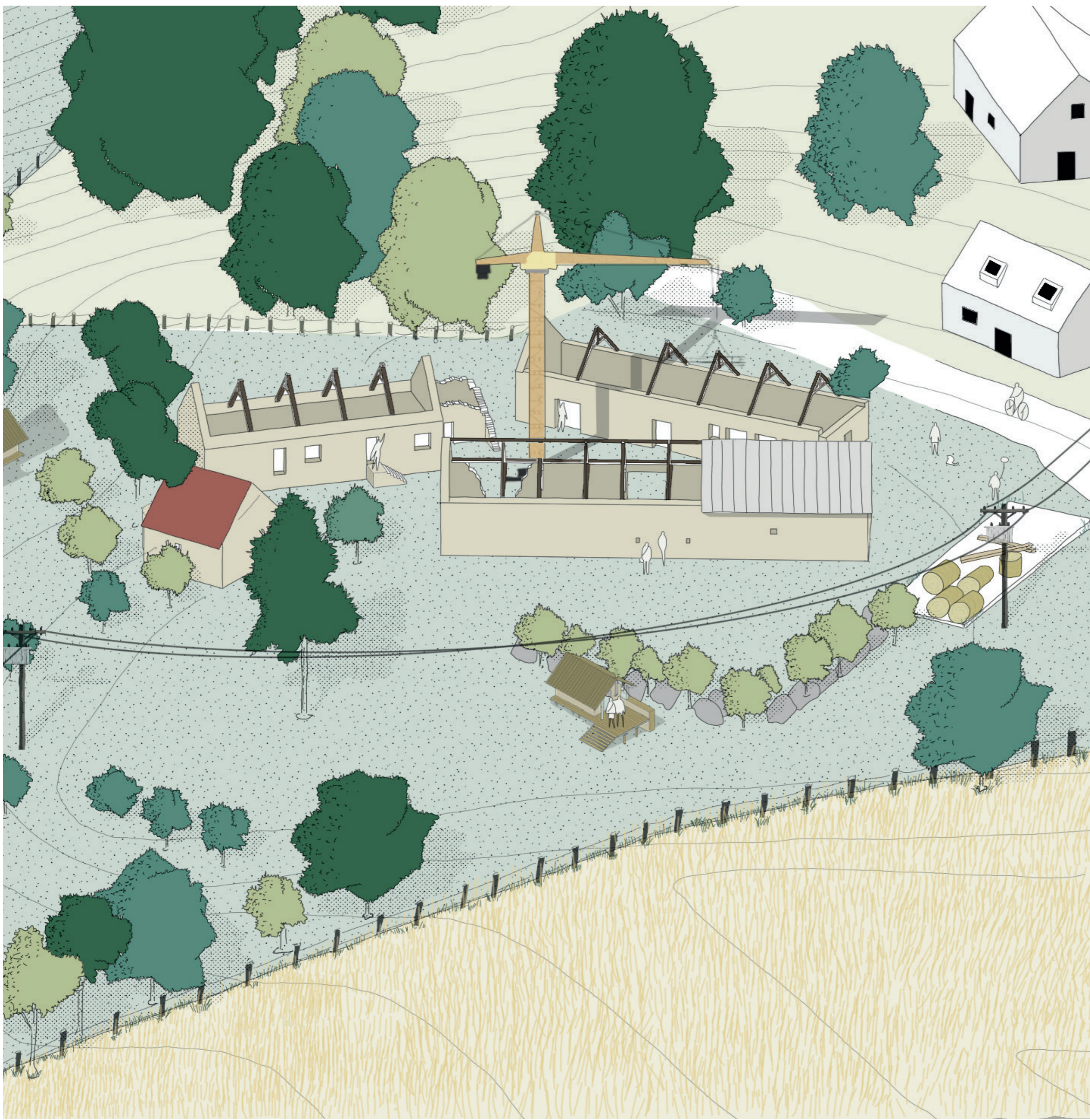
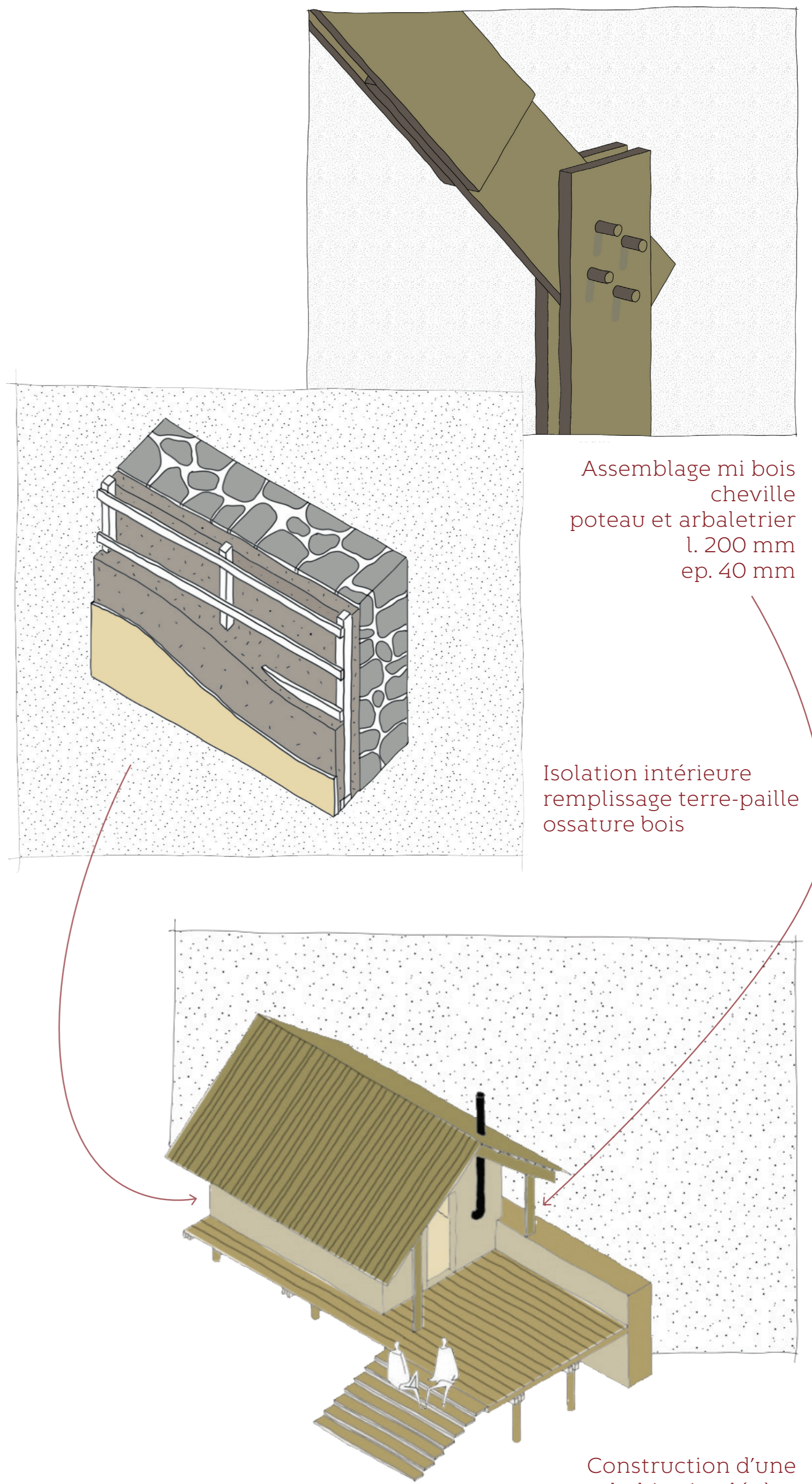


Façonner le hameau

Mise en oeuvre



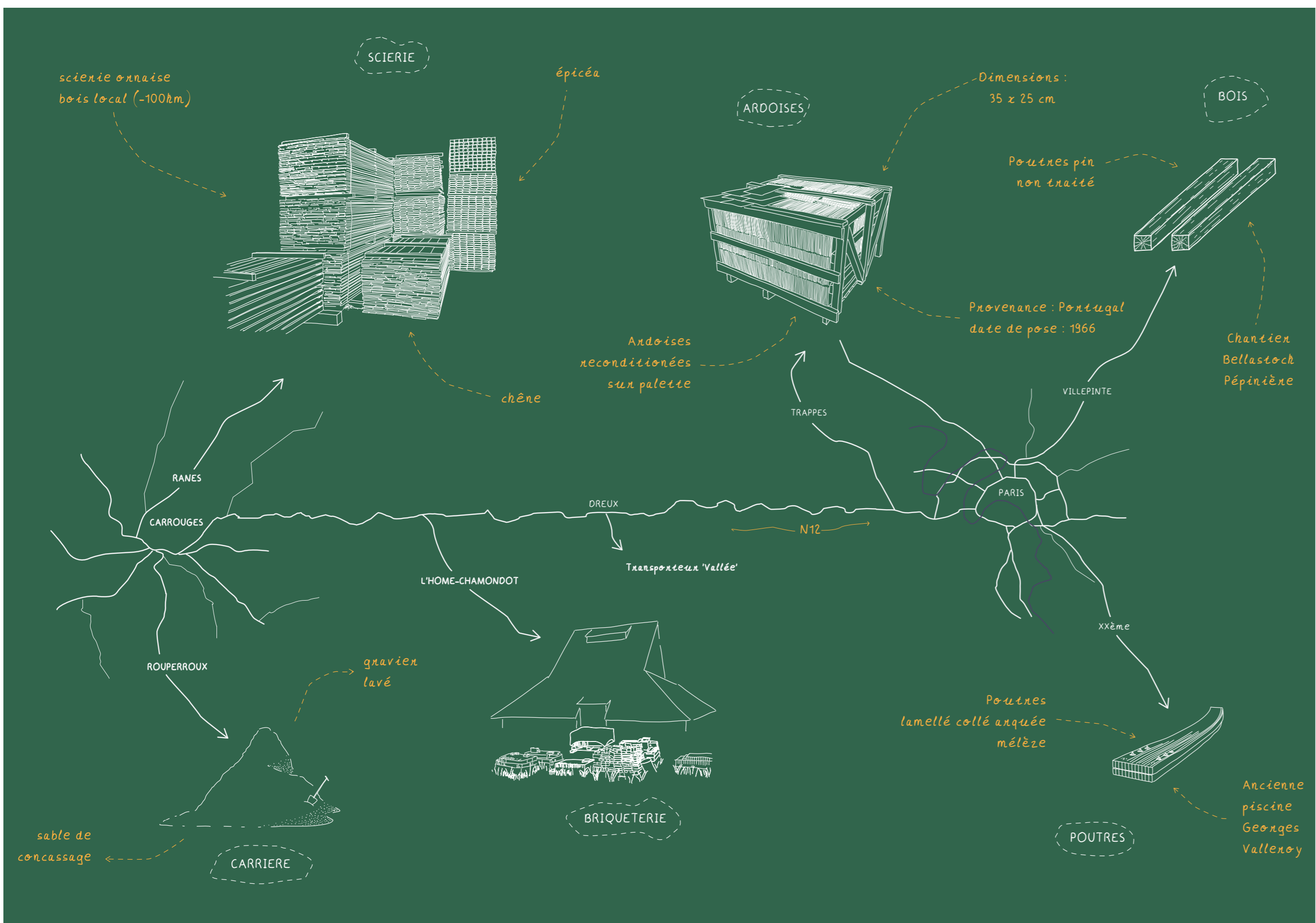
Chantier en cours / aout 2023



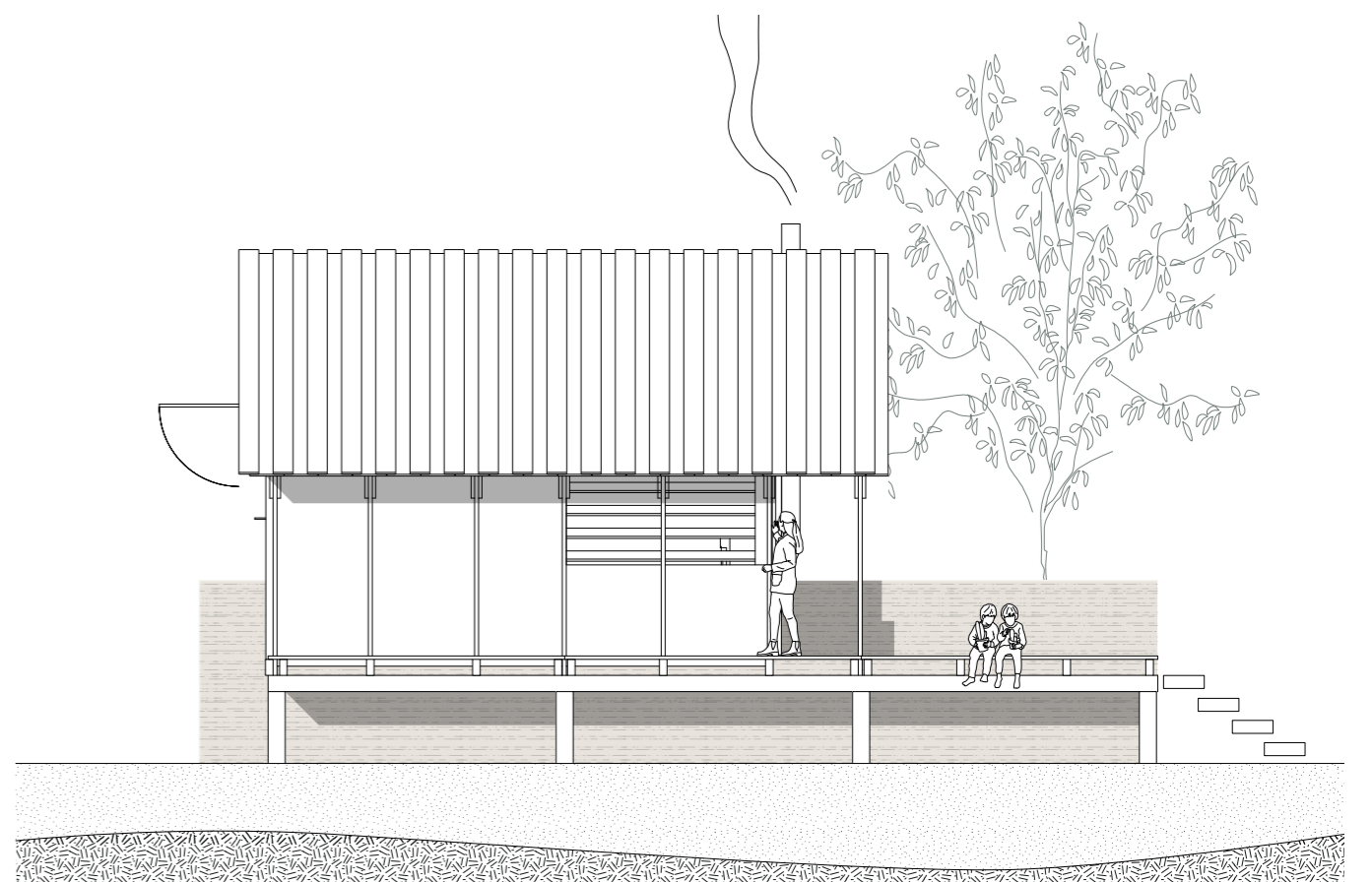
Assemblage mi bois
cheville
poteau et arbalétrier
l. 200 mm
ep. 40 mm

Isolation intérieure
remplissage terre-paille
ossature bois

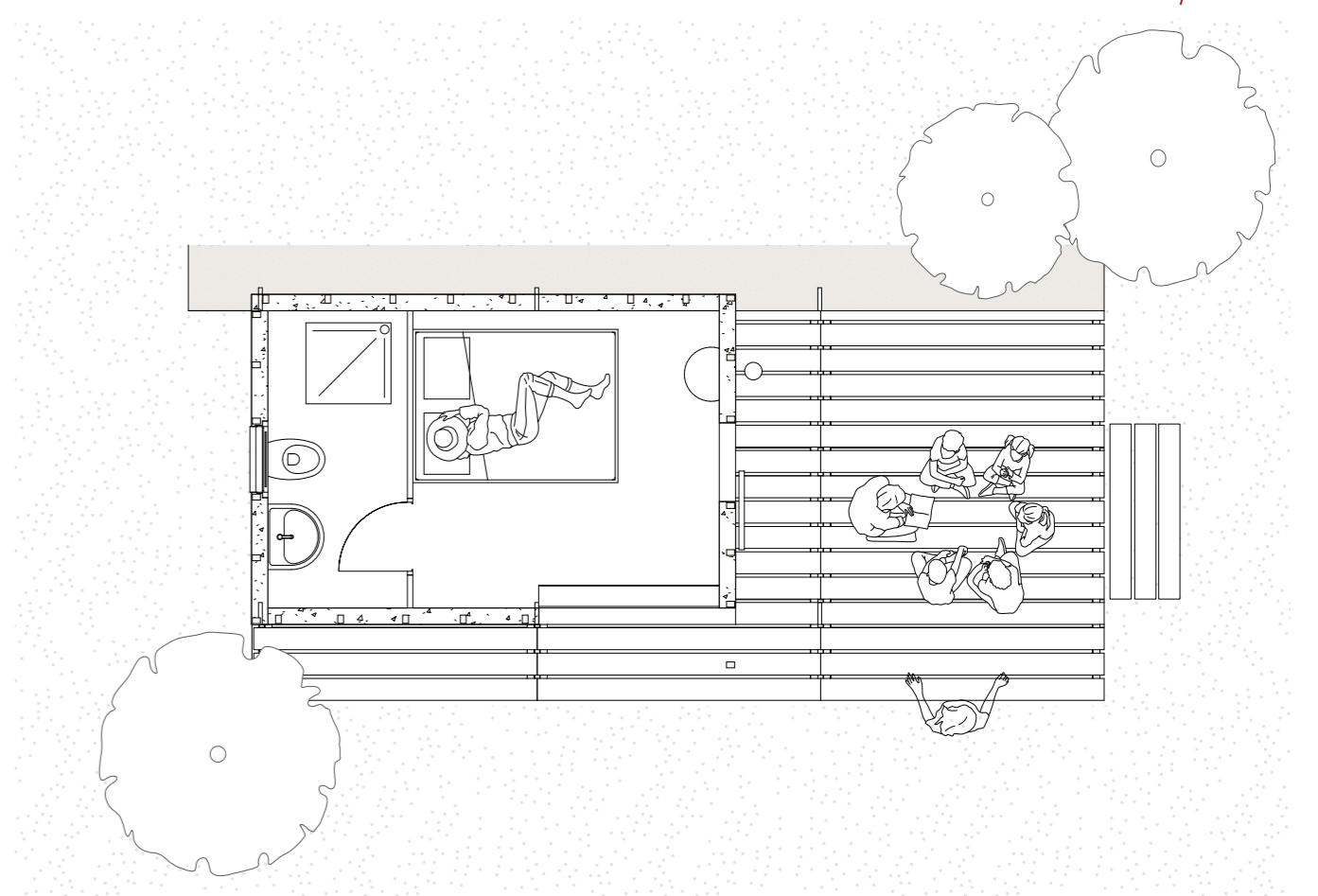
Construction d'une
habitation légère



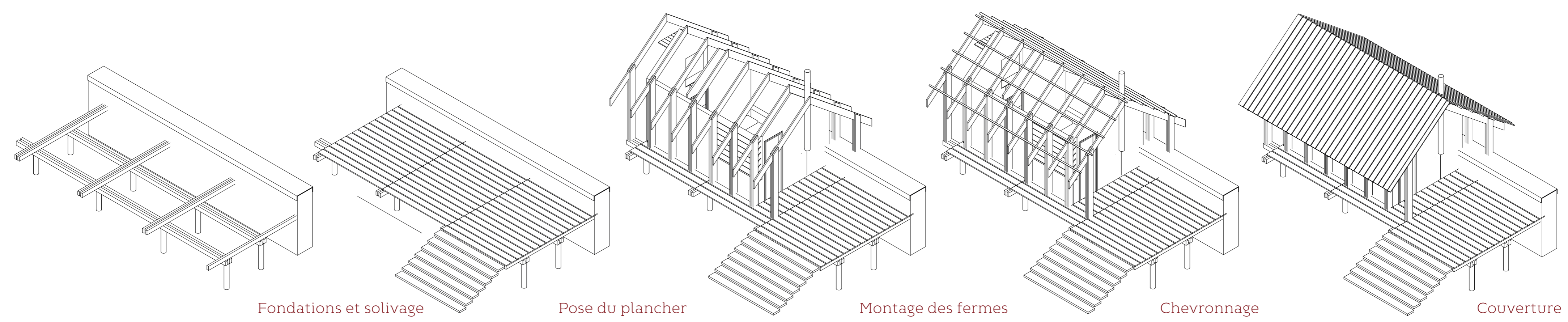
Carte des matériaux / année 1



Plan RDC - 1/50ème



Plan RDC - 1/50ème



Fondations et solivage

Pose du plancher

Montage des fermes

Chevronnage

Couverture