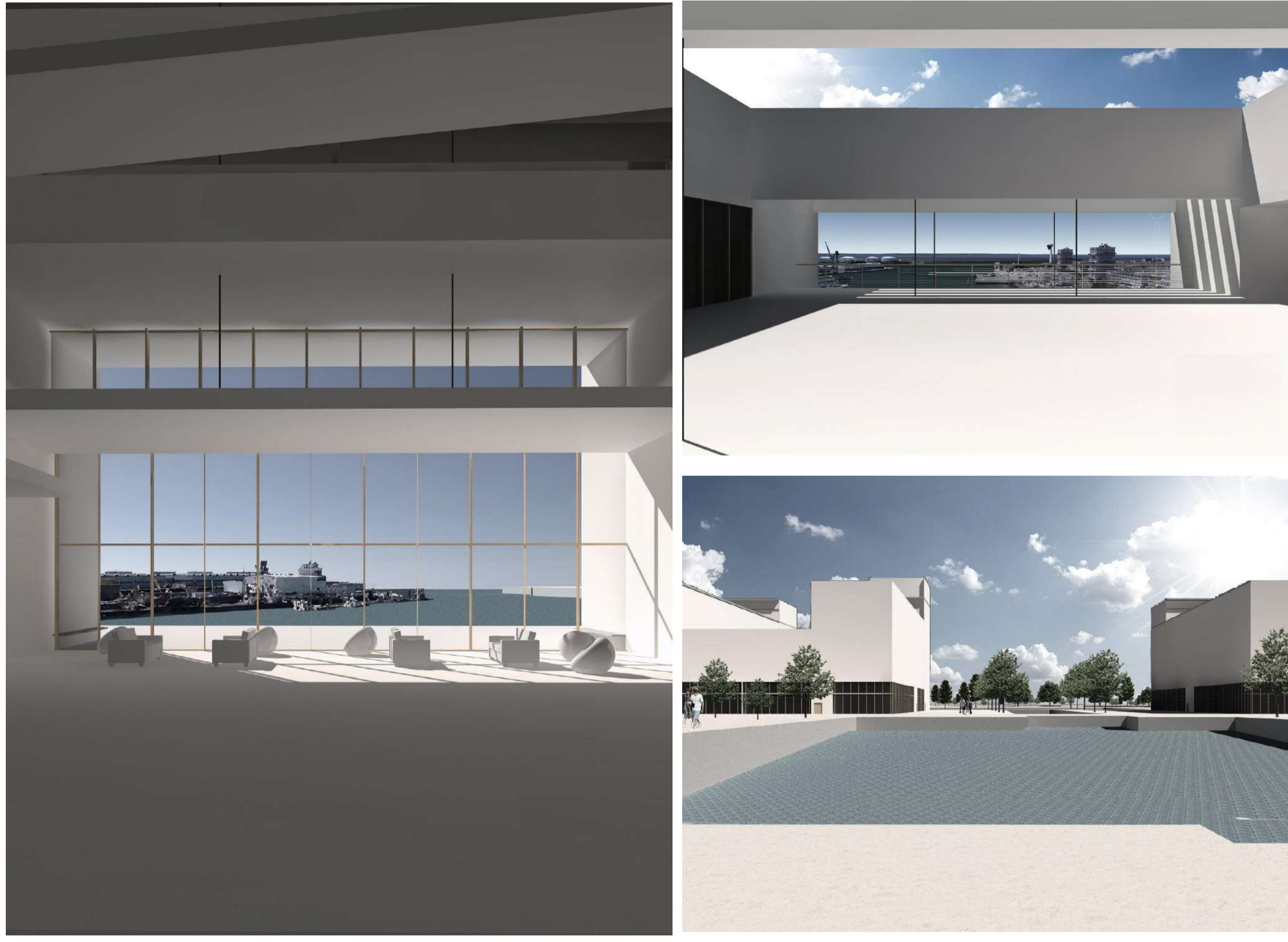


UNE ILE TRAIT D'UNION ENTRE LA VILLE ET L'OCEAN - LE HAVRE

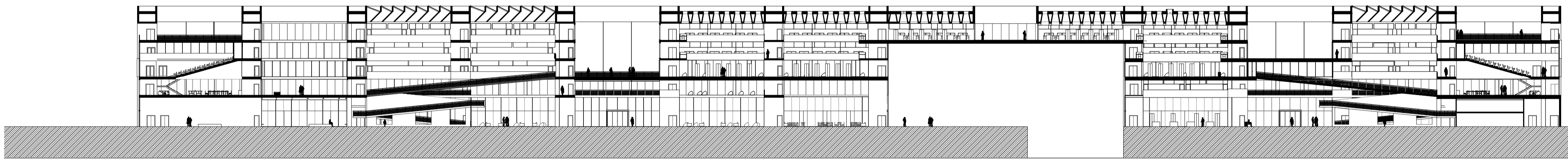
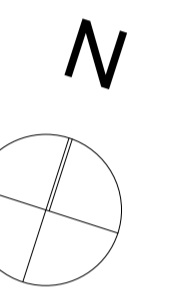
Un centre de recherche et d'enseignement sur la mer et un grand parc pour le Havre



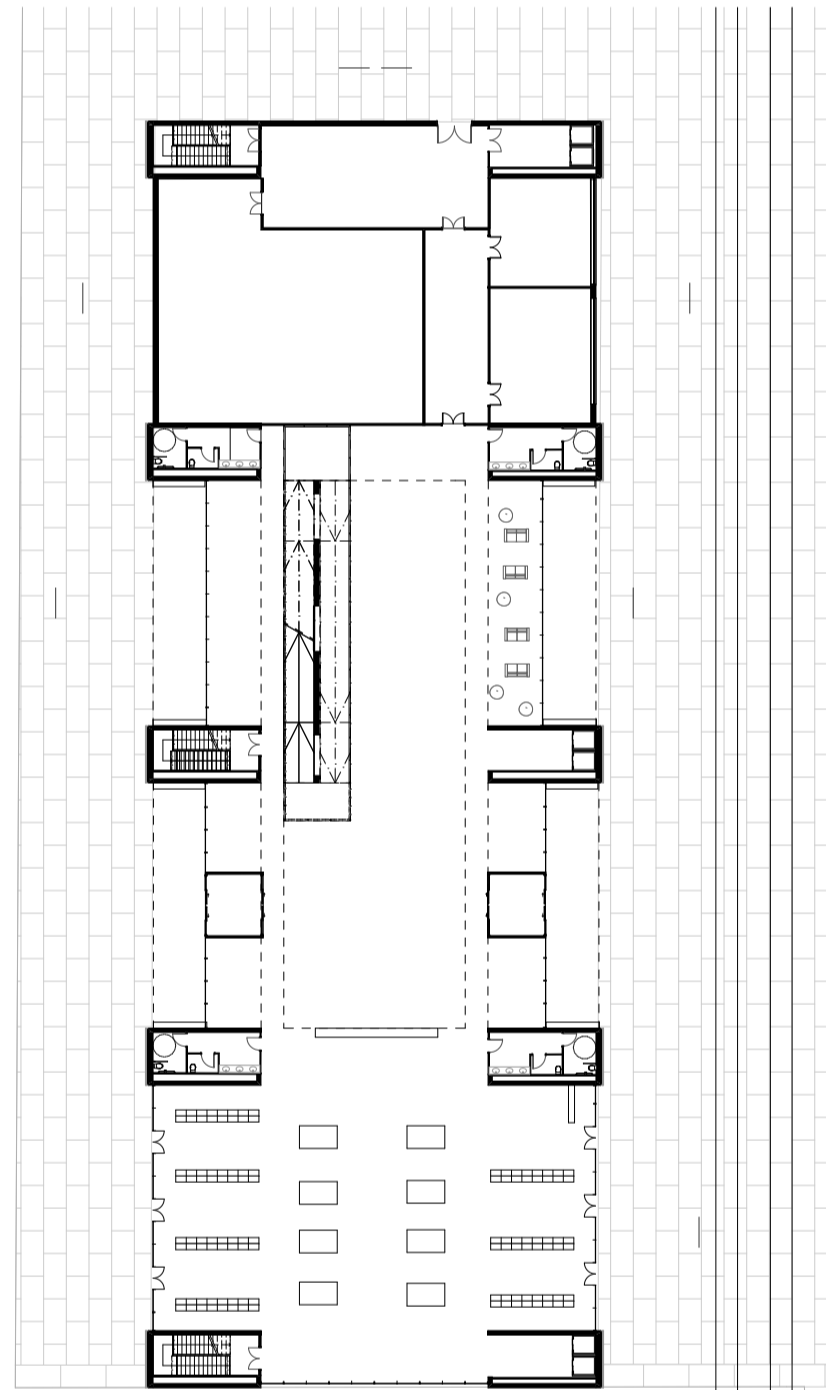
Vue depuis l'équipement public



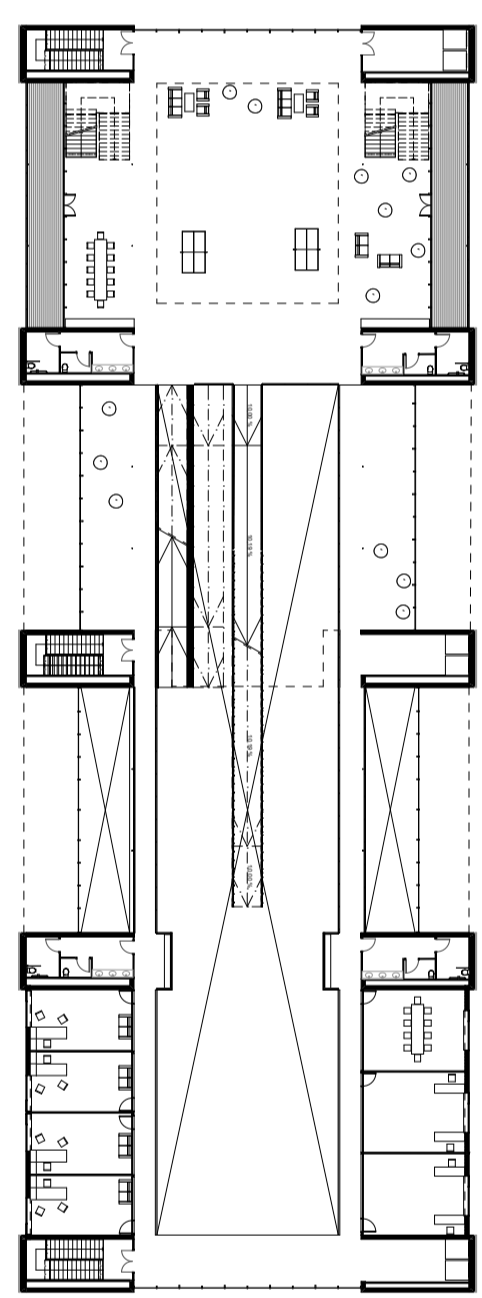
Plan masse 1 : 2000



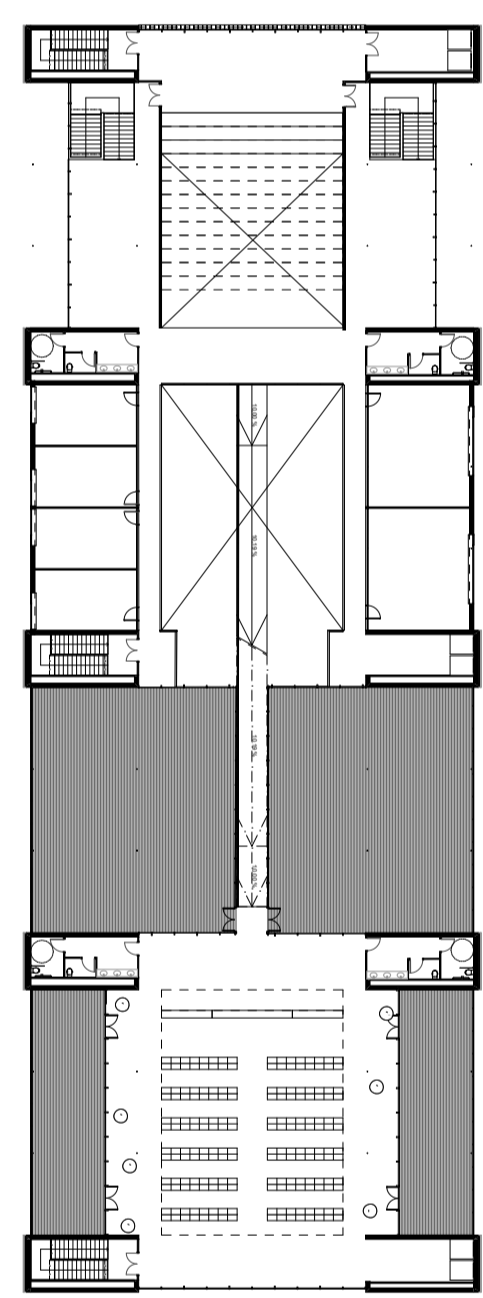
Coupe longitudinale 1 : 500



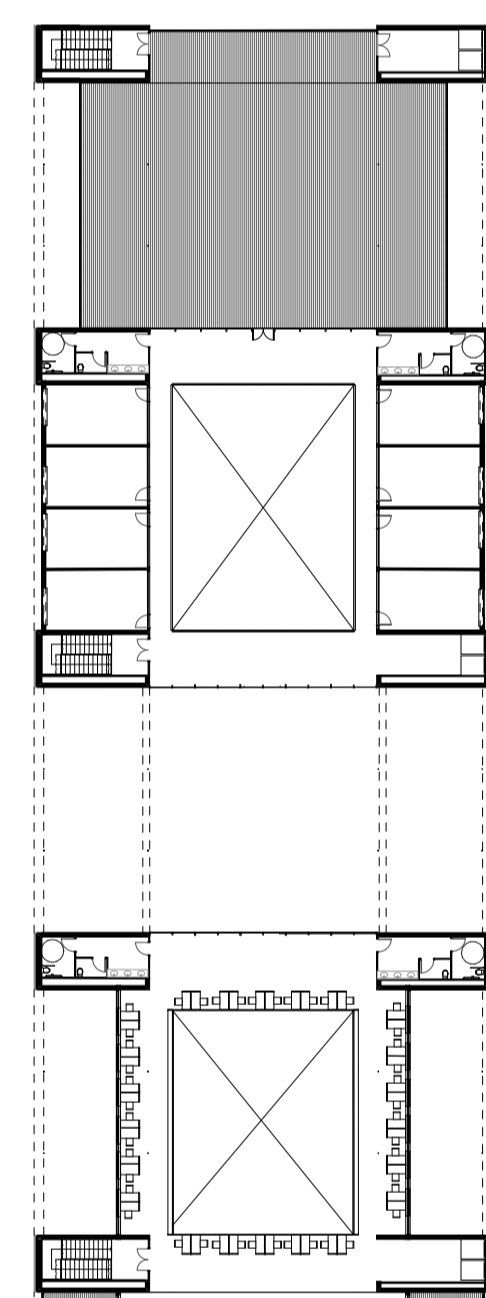
Plan RDC 1 : 500



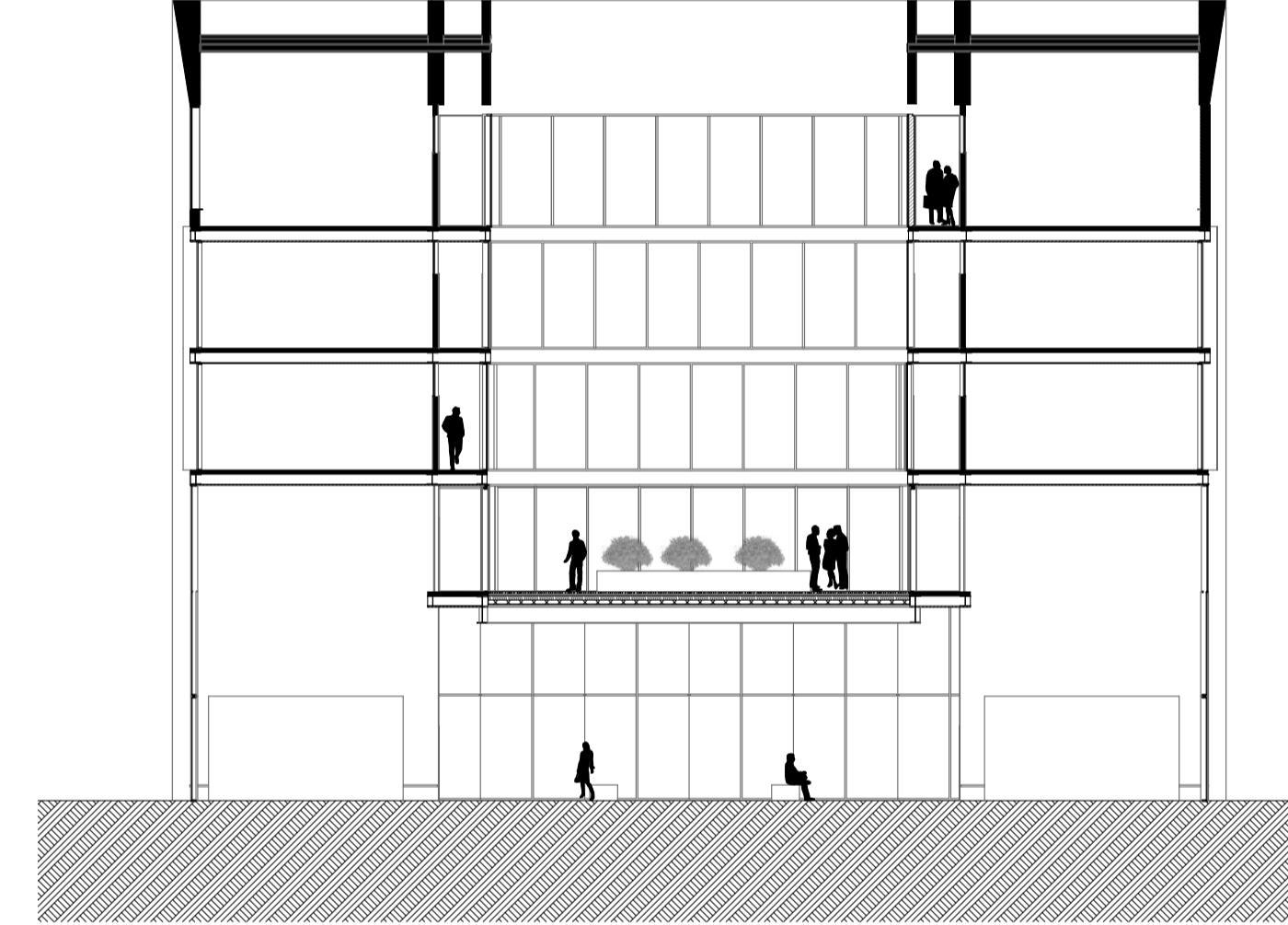
Plan R+1 1 : 500



Plan R+2 1 : 500



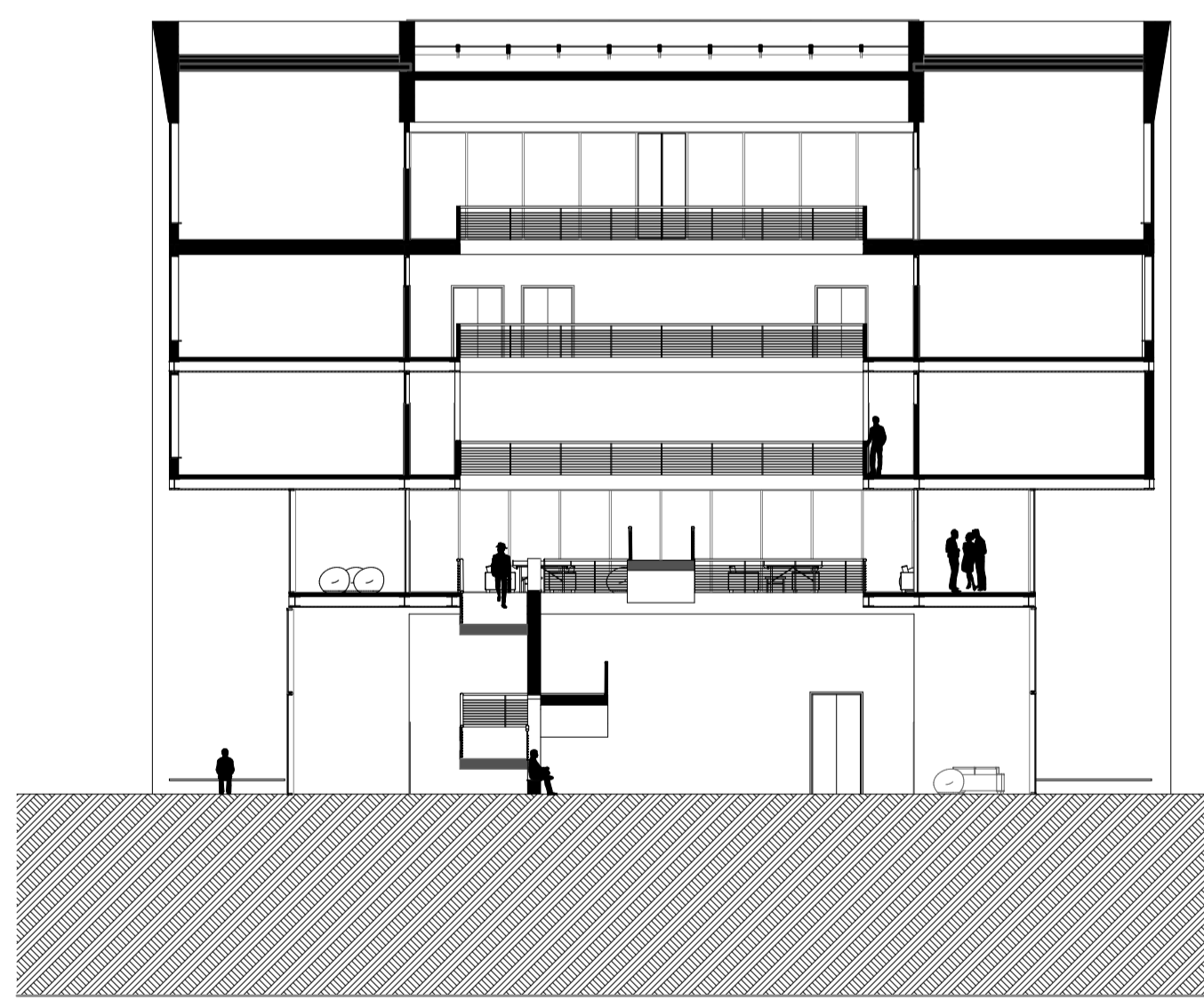
Plan R+4 1 : 500



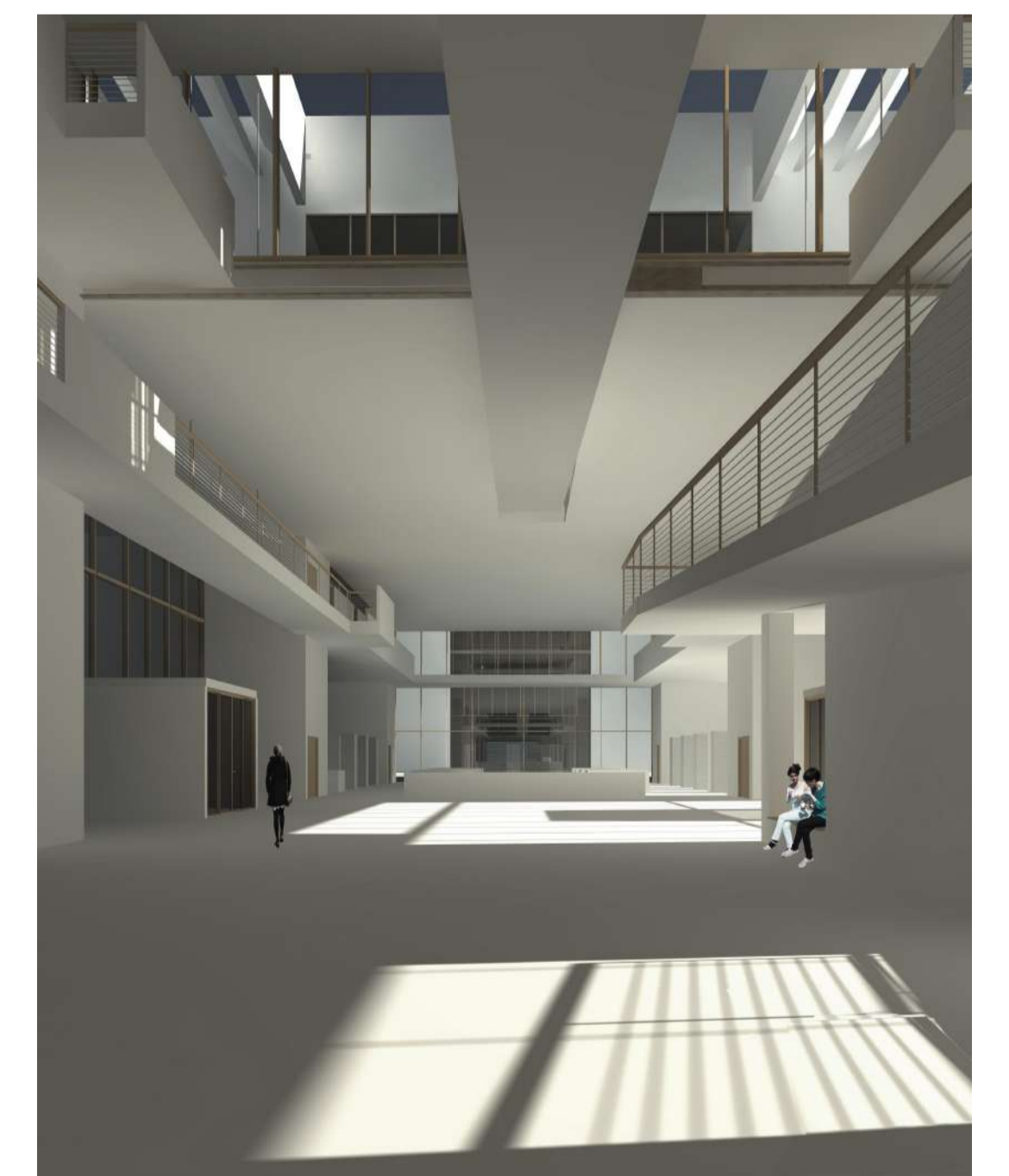
Coupe transversale sur le patio 1:200



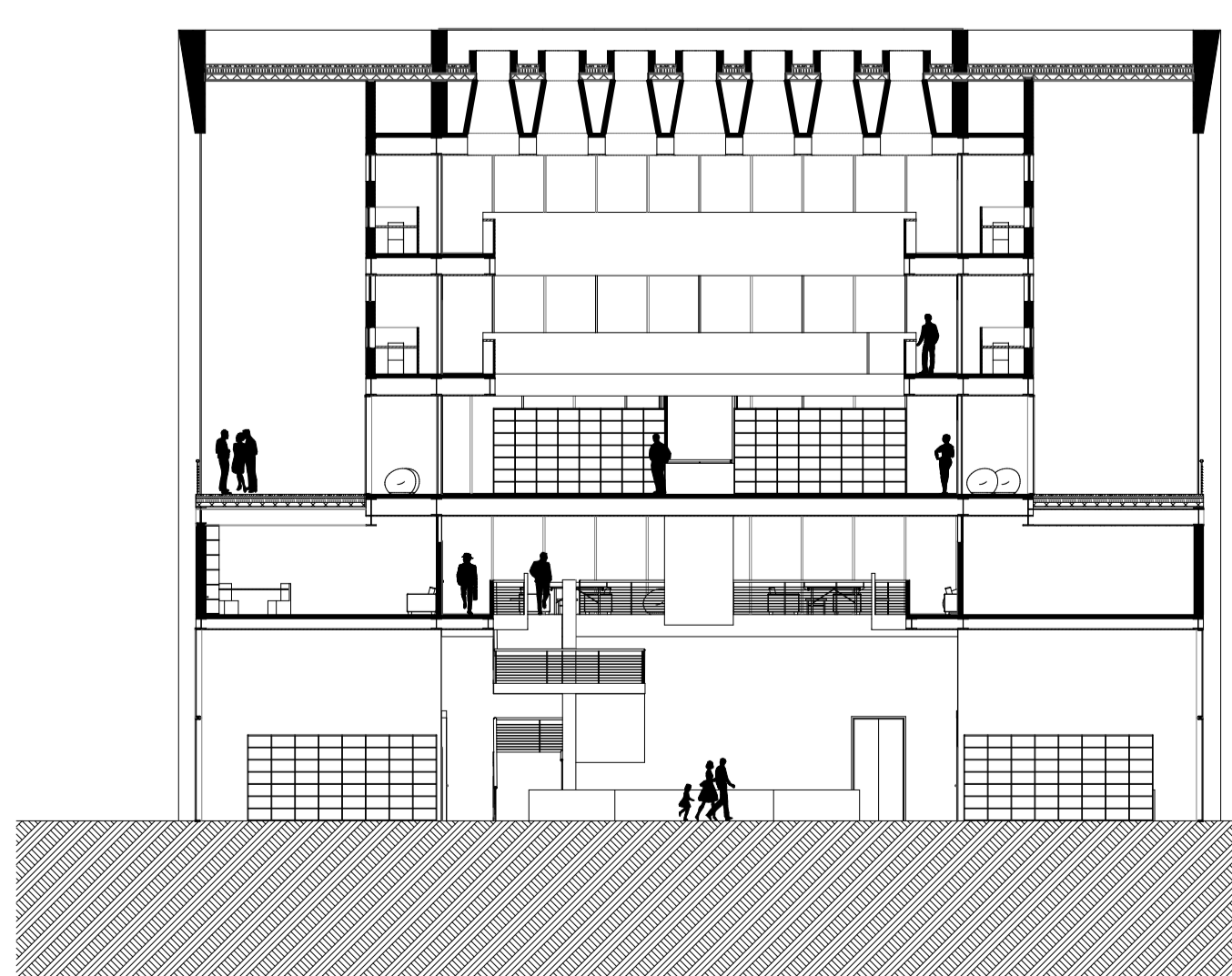
Vue sur la patio



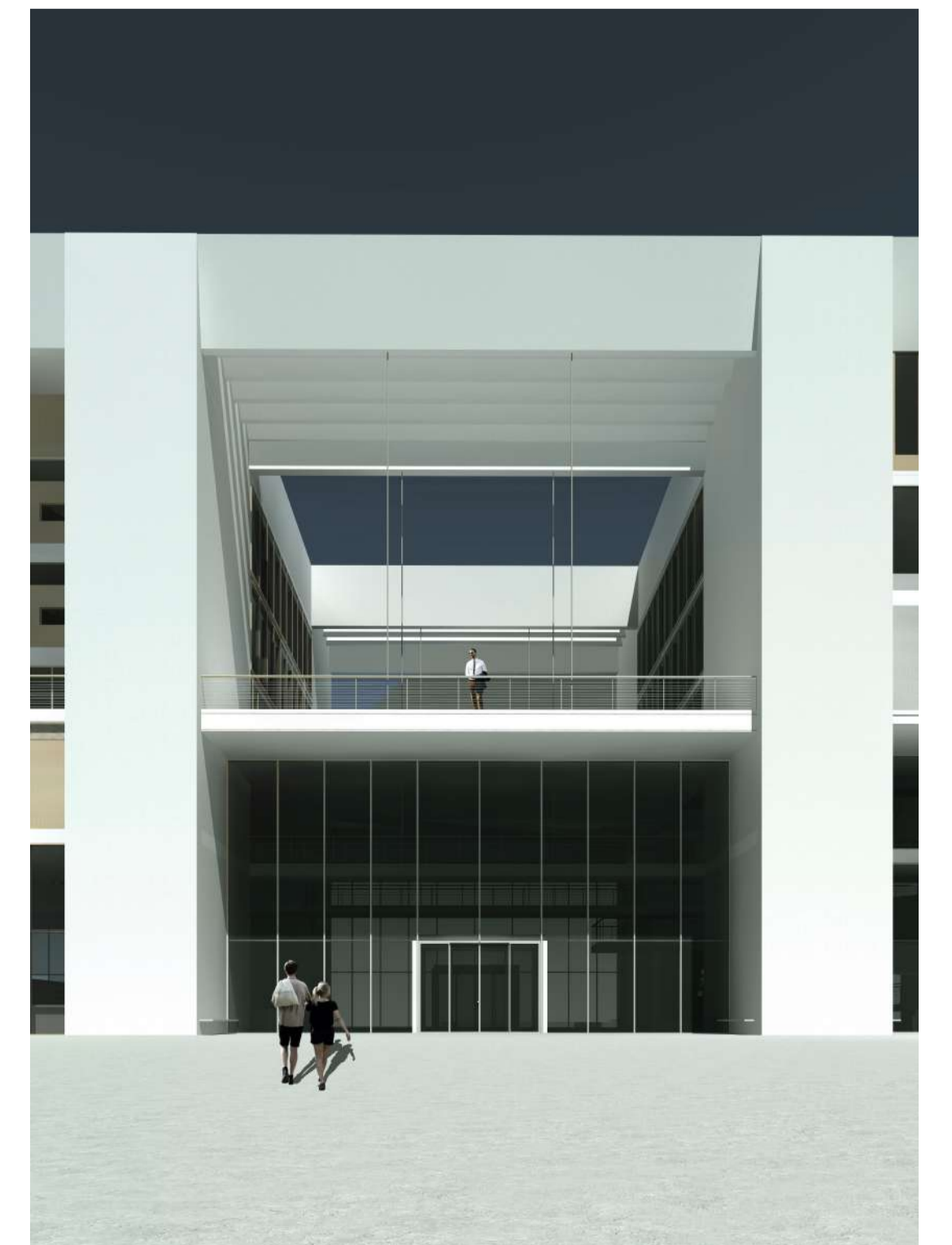
Coupe transversale sur l'atrium 1:200



Vue de l'atrium



Coupe transversale sur la bibliothèque 1:200



Vue de l'entrée