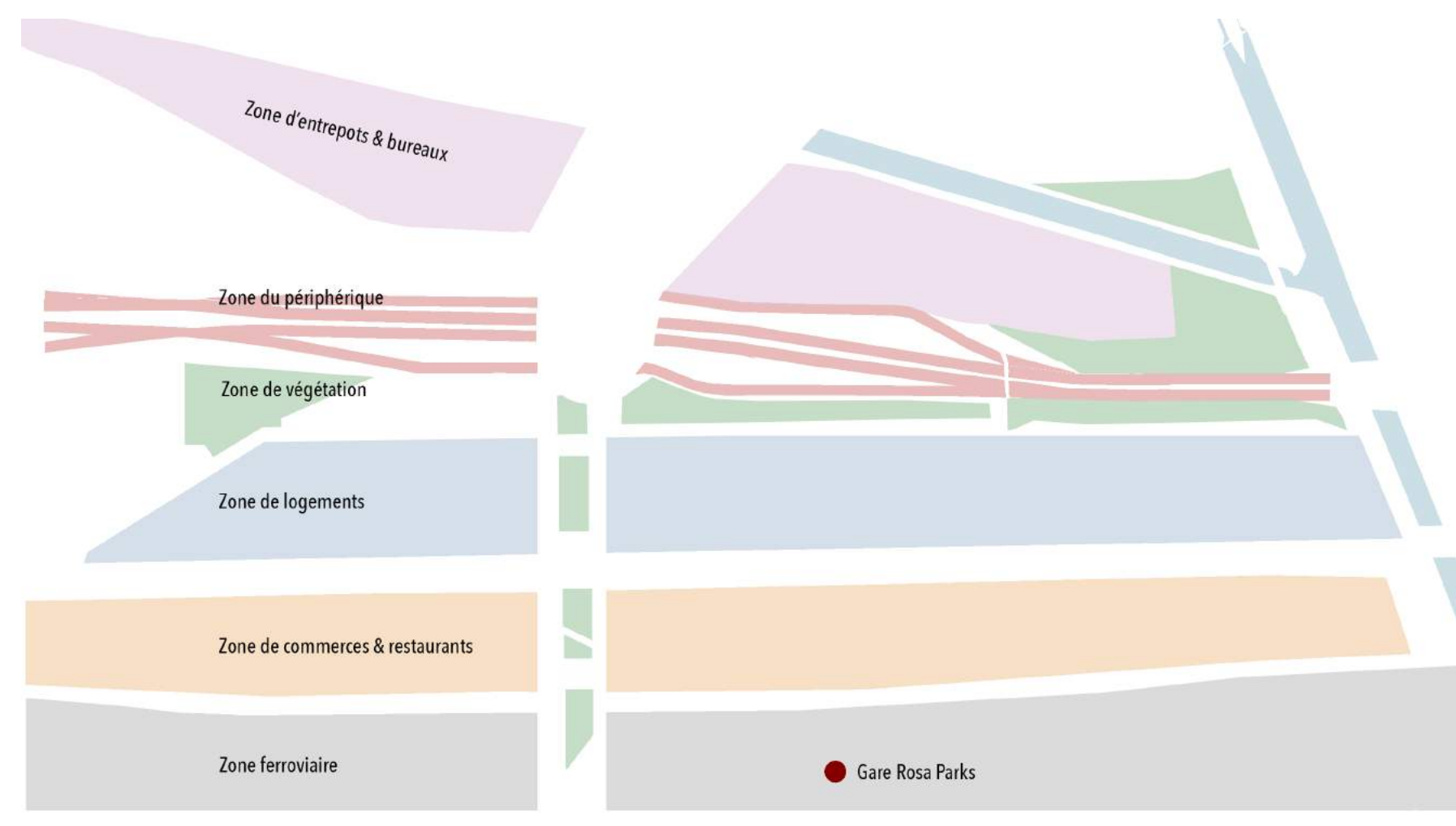
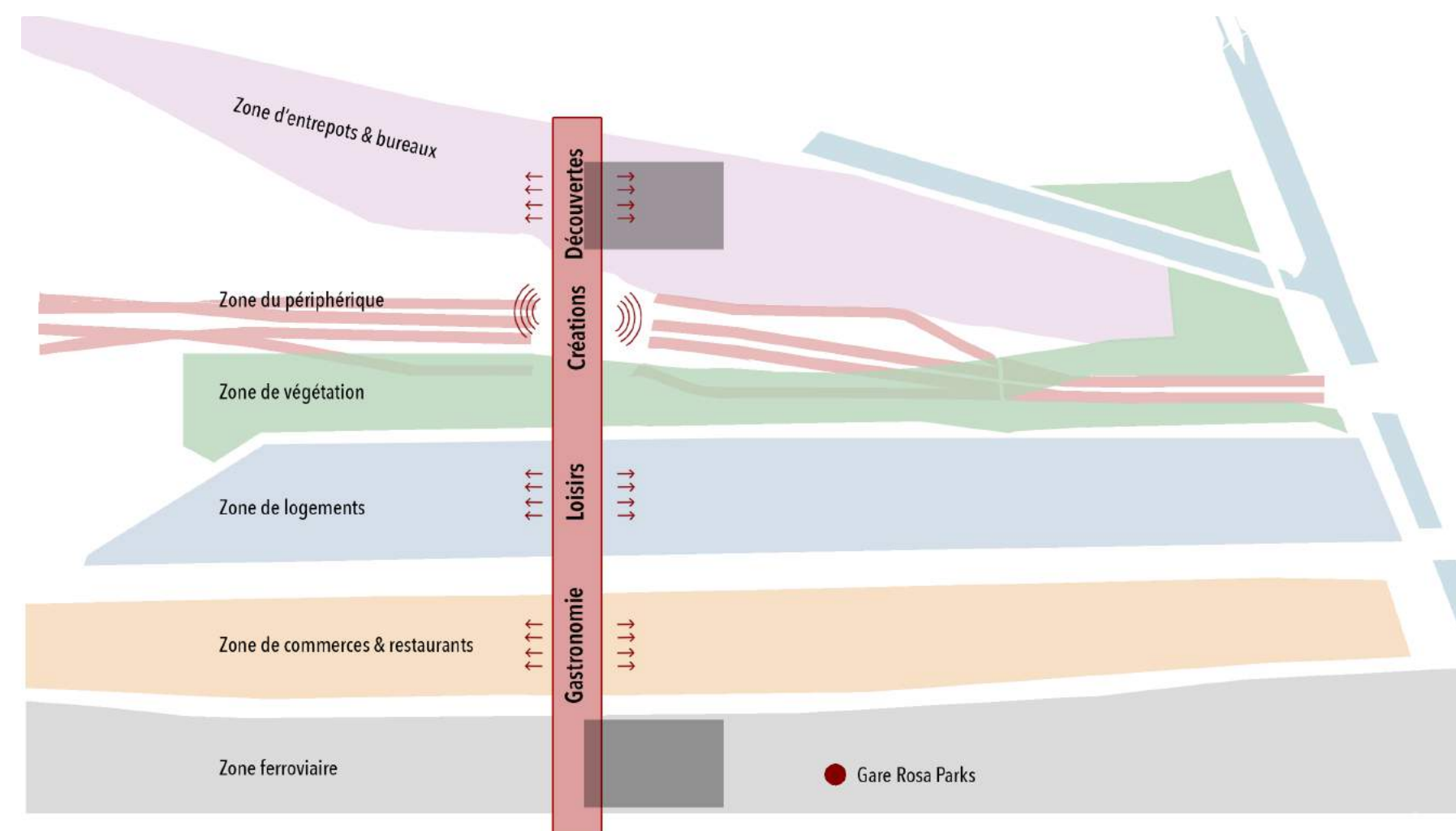


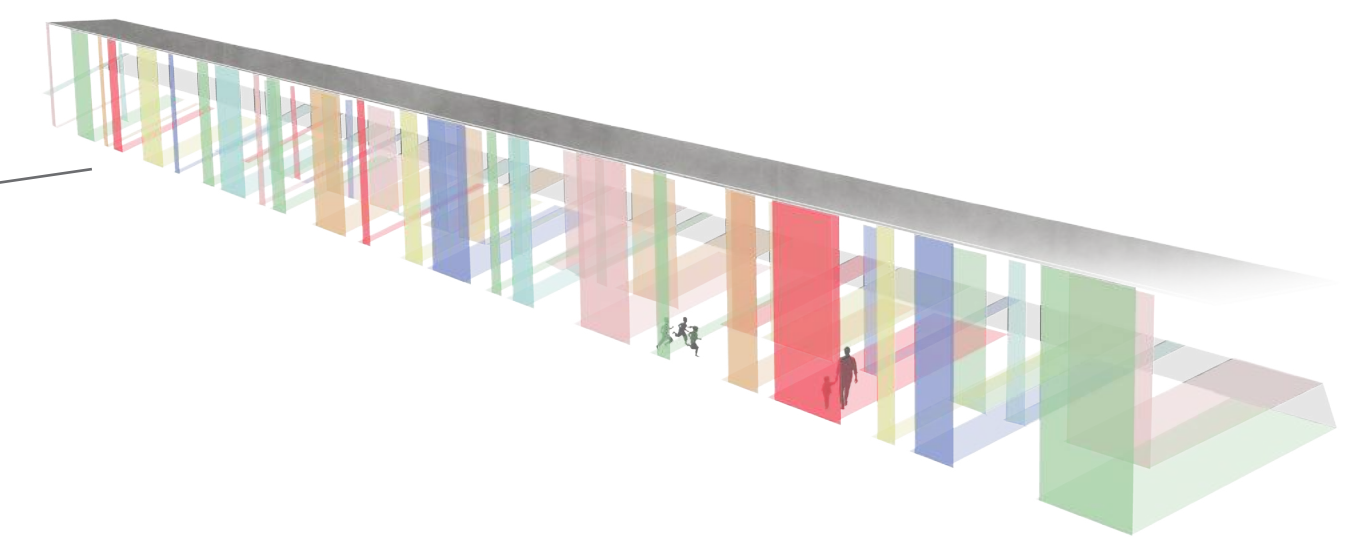
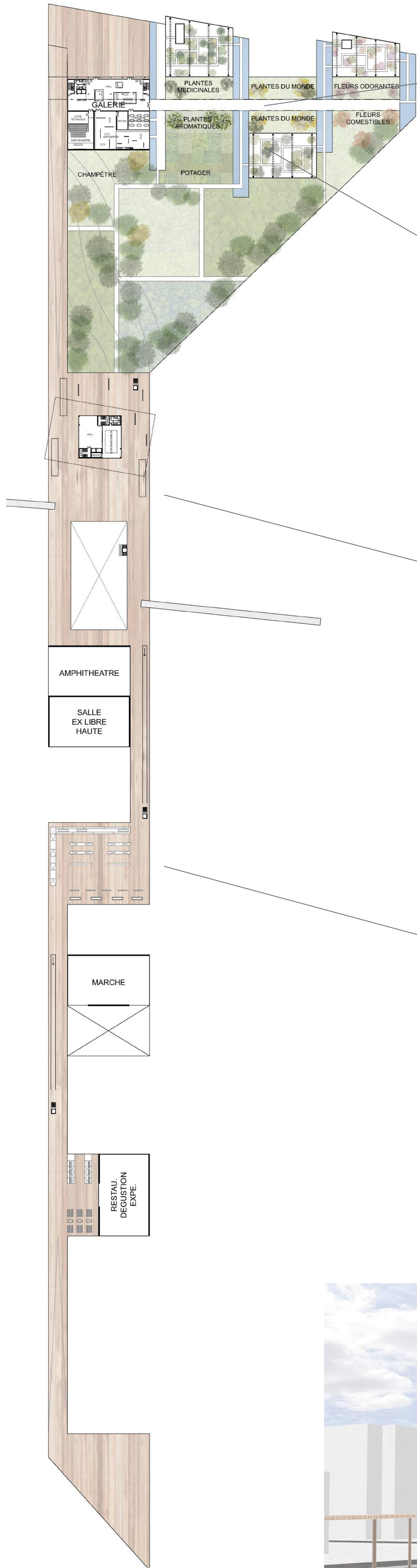
L'AXE EN DOUBLE HAUTEUR : le trait d'union entre Paris et Aubervilliers



Analyse



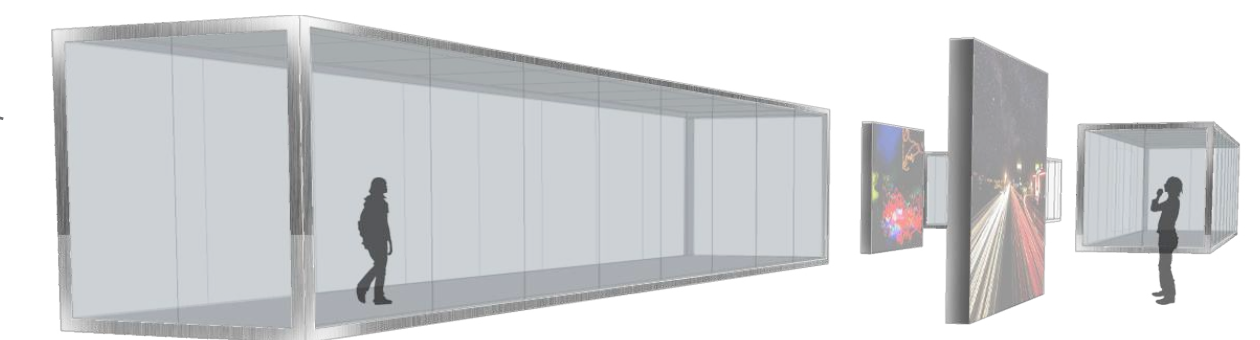
Intentions



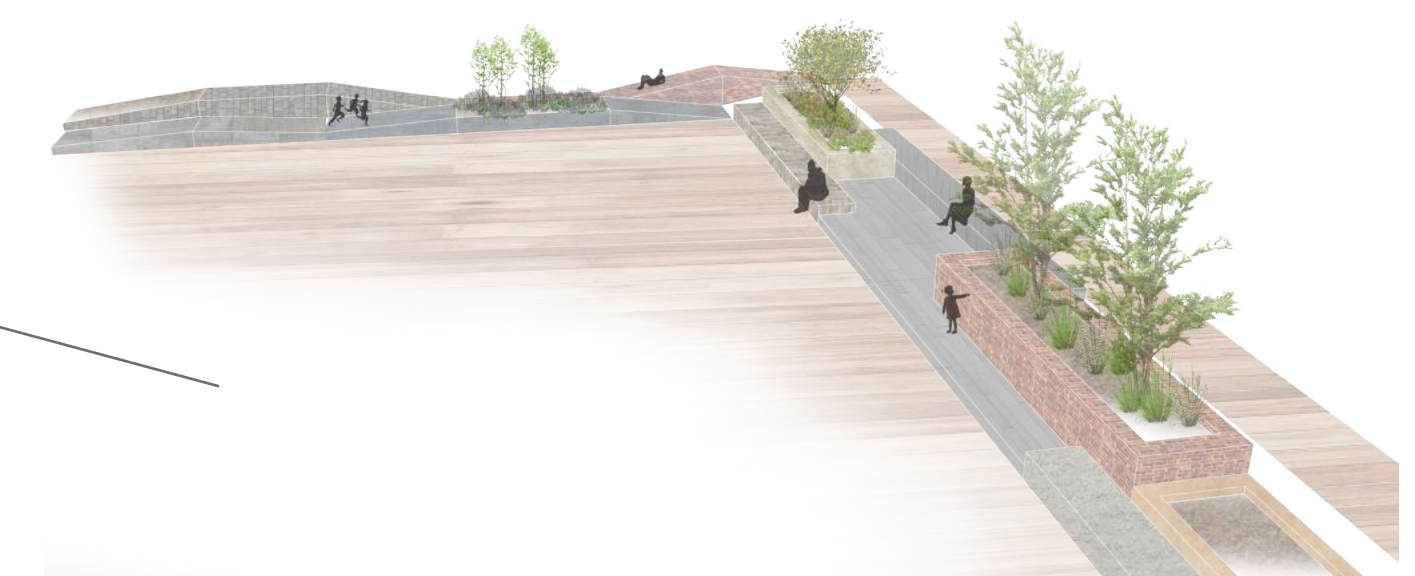
La vue



L'odorat et le gustatif

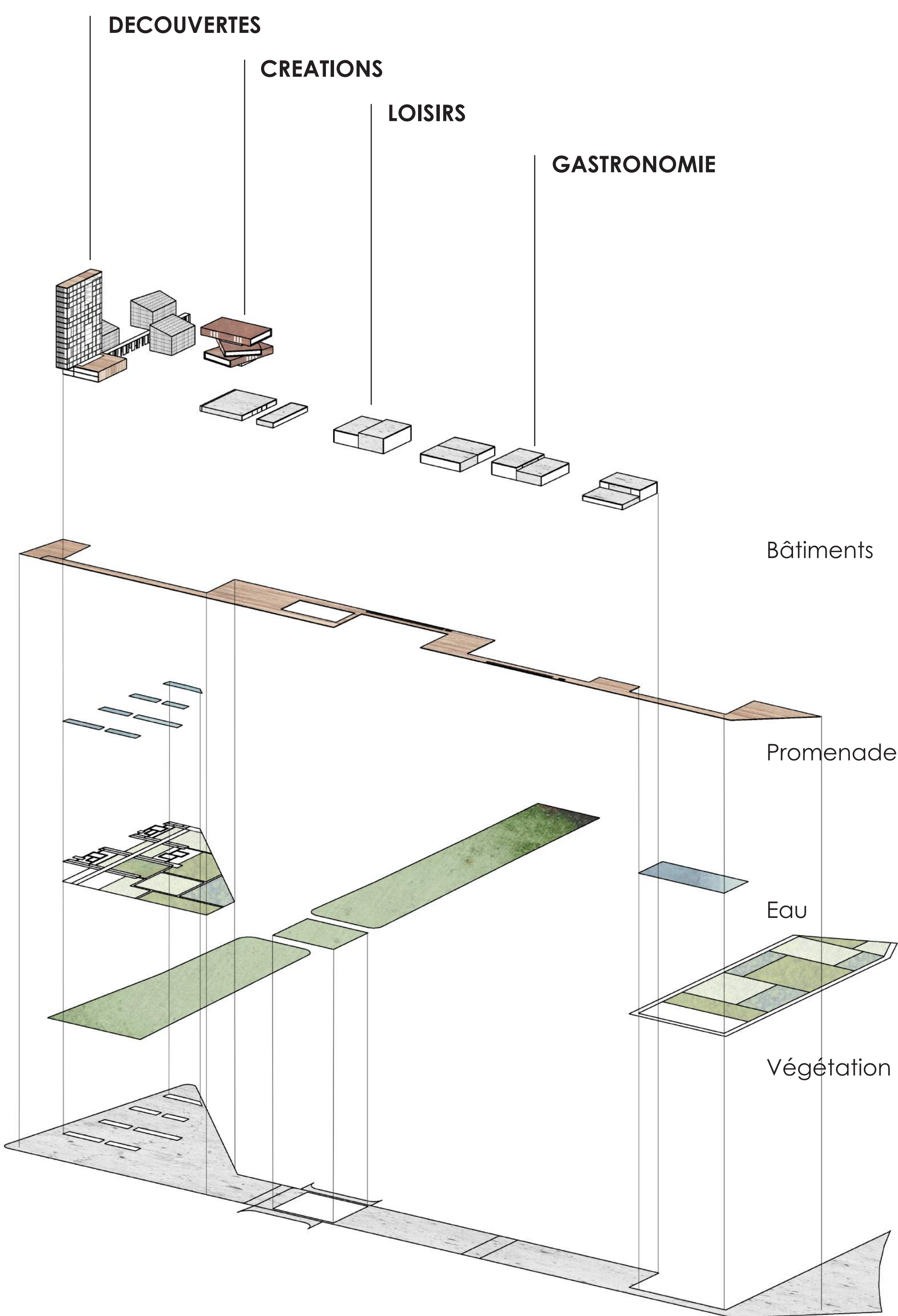


L'ouïe et la vue



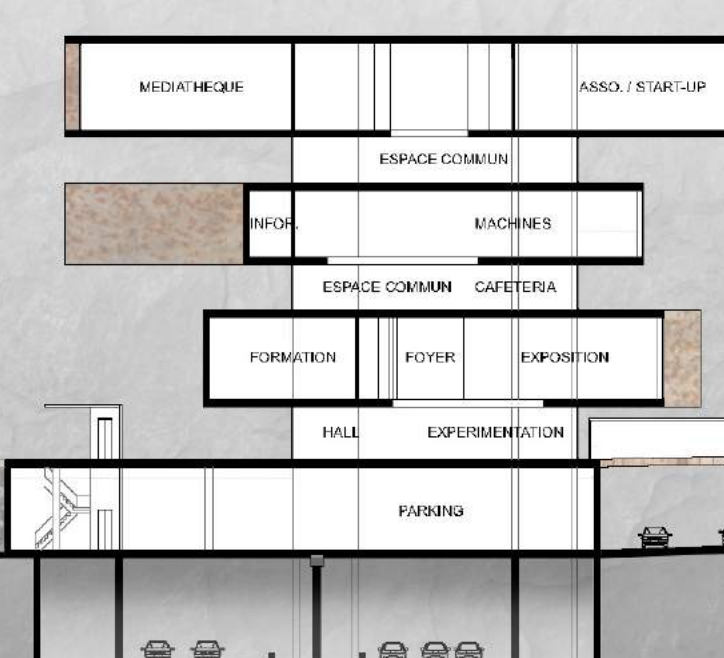
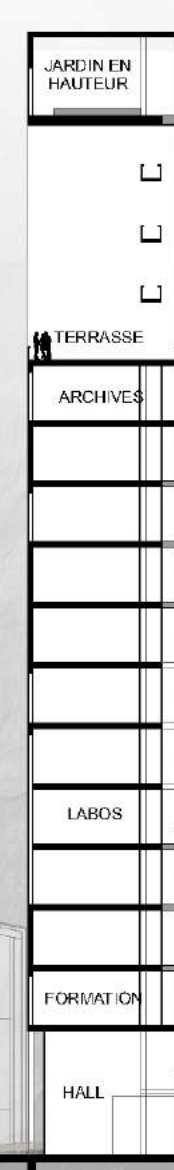
Le toucher

DISPOSITIFS SENSORIELS

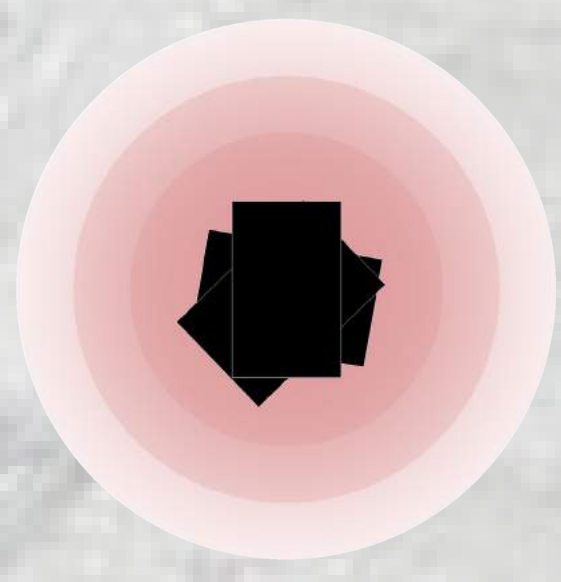


AXONOMETRIE ECLATEE

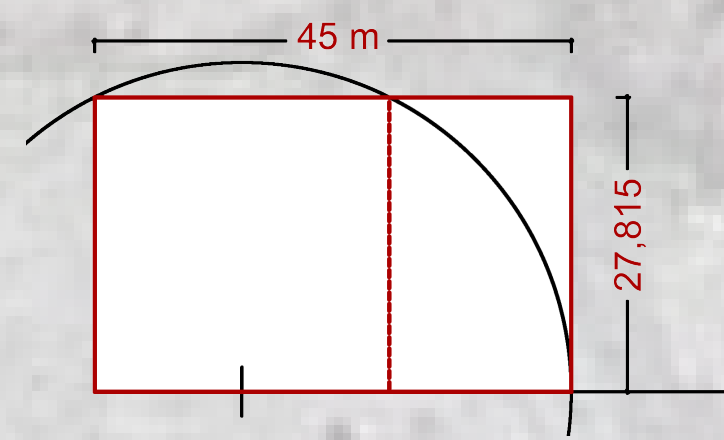
Rez-de-chaussée PLAN AXE 1:1000



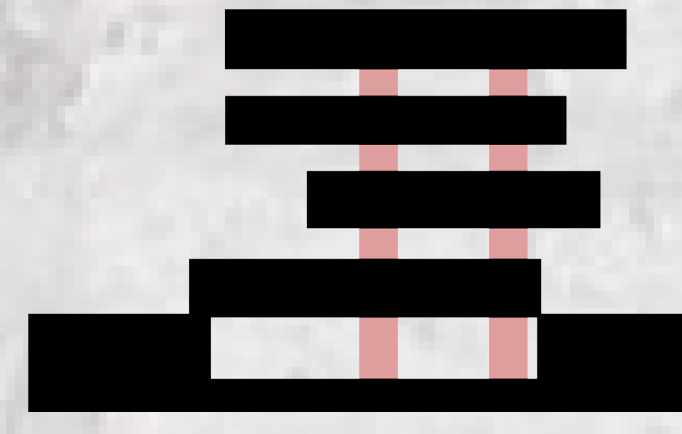
FABLAB



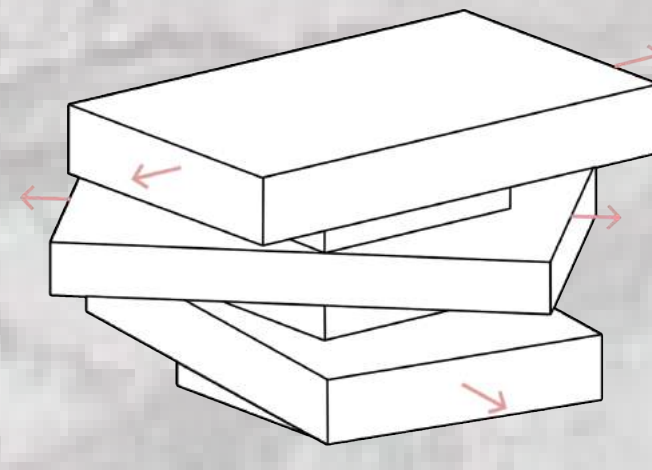
Bâtiment signal



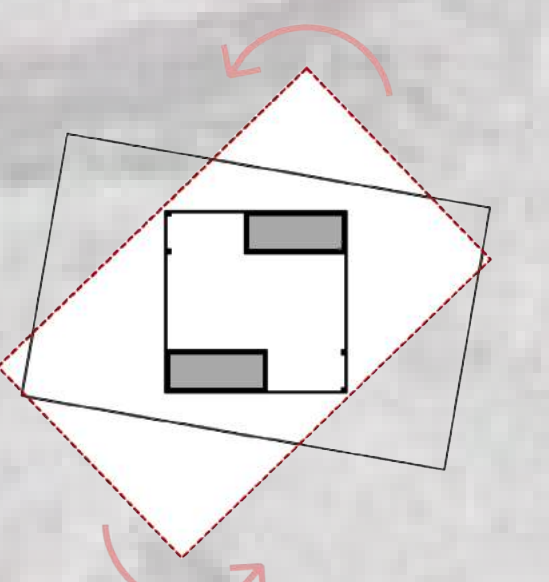
Rectangle d'or



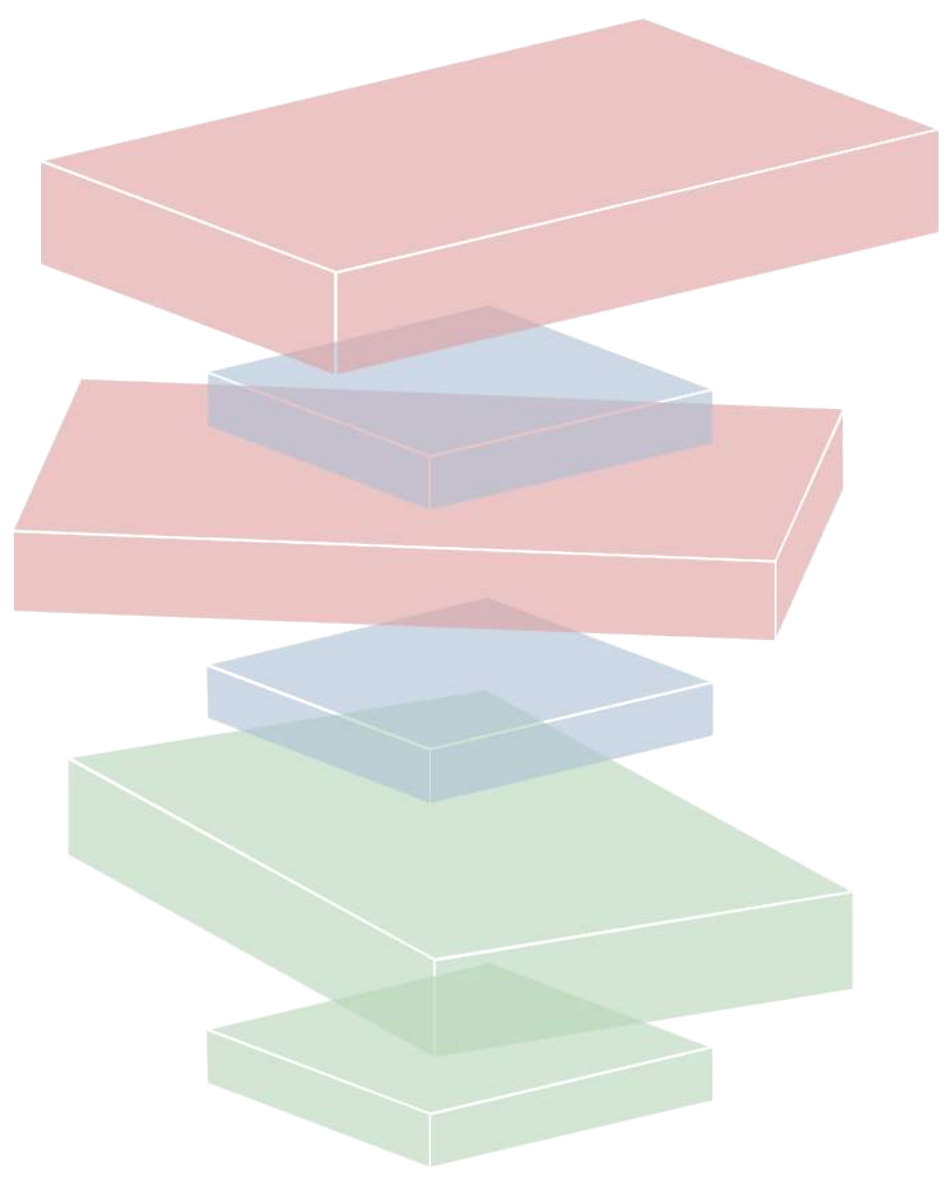
Pleins-vides



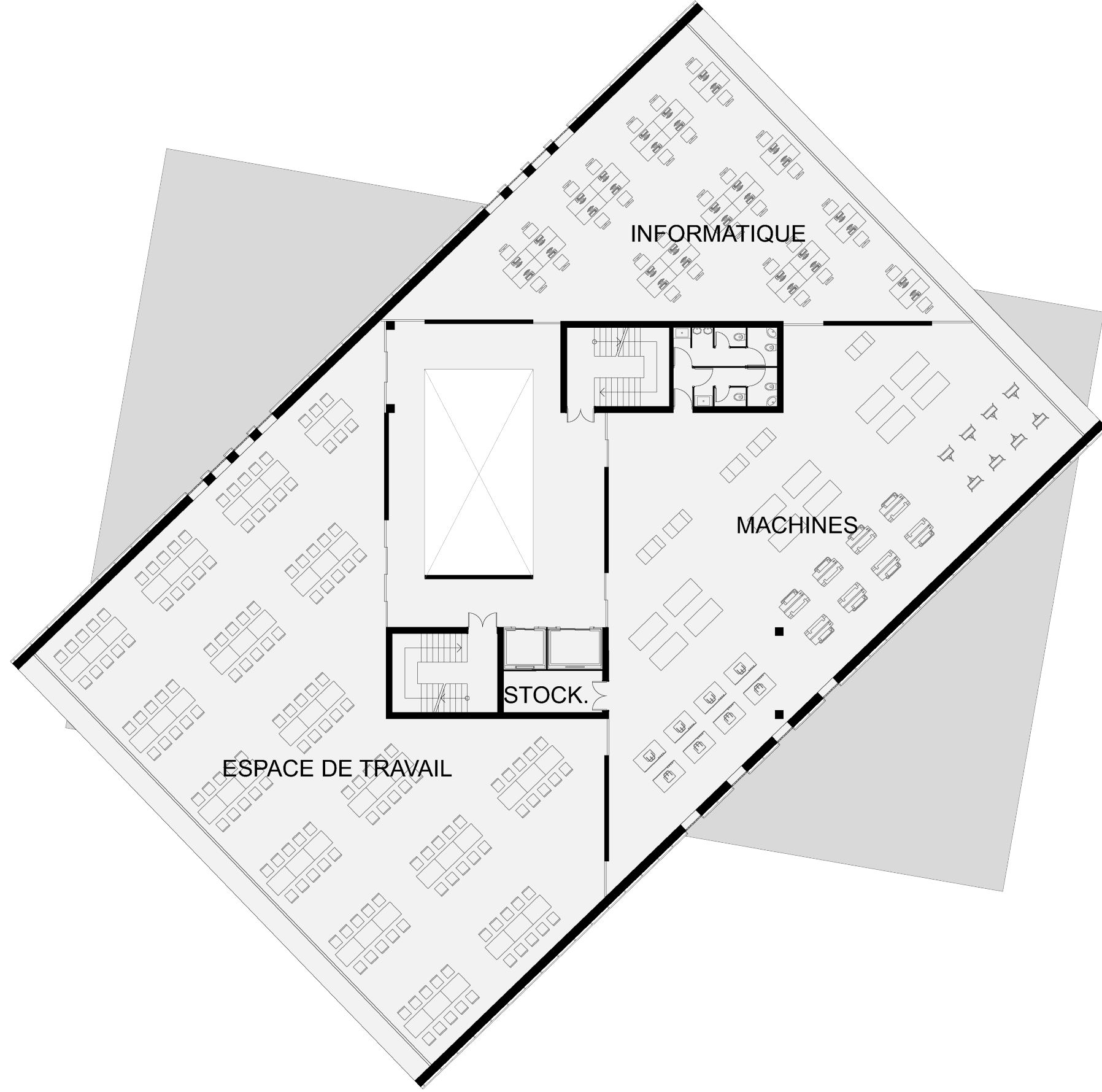
Orientation



Rotation



- espaces publics
- espaces création
- espaces communs



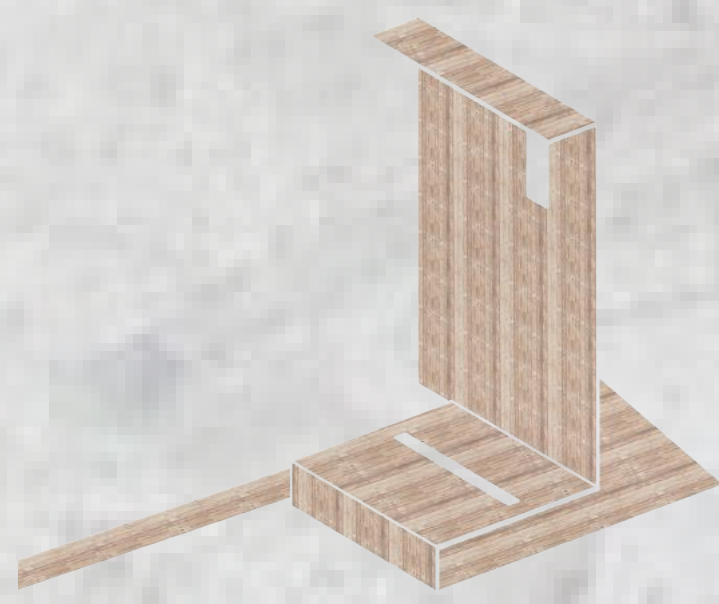
PROGRAMME

PLAN 3e

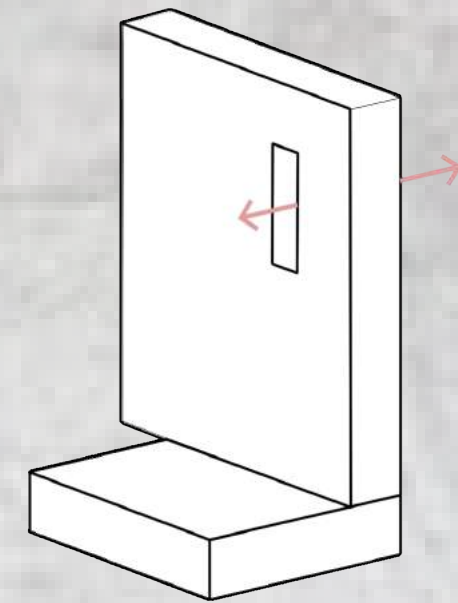


1:200

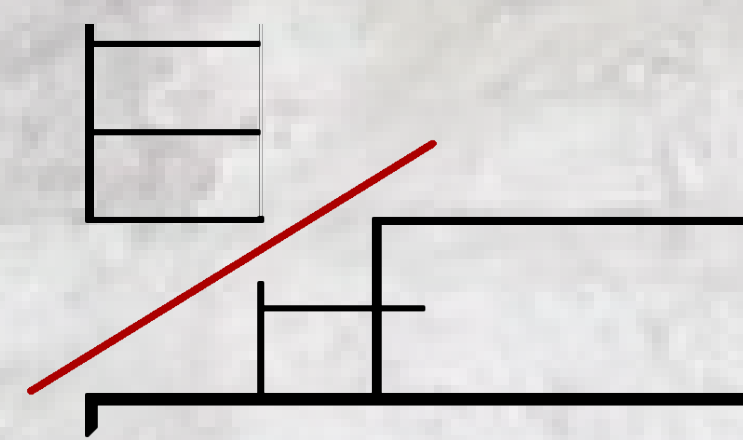
CENTRE DE BIODIVERSITE



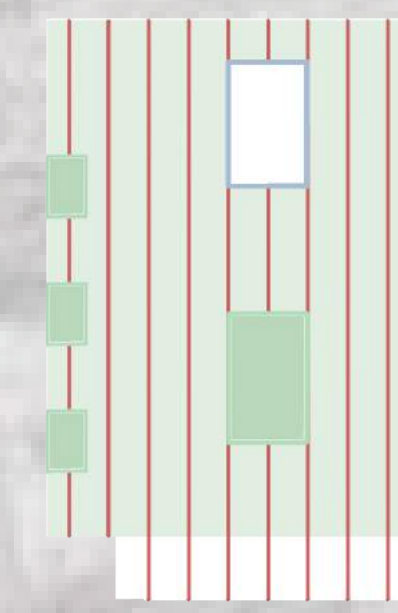
Retournement de l'axe



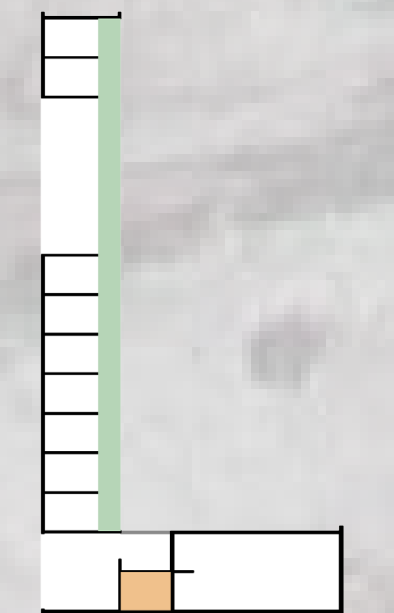
Ouverture



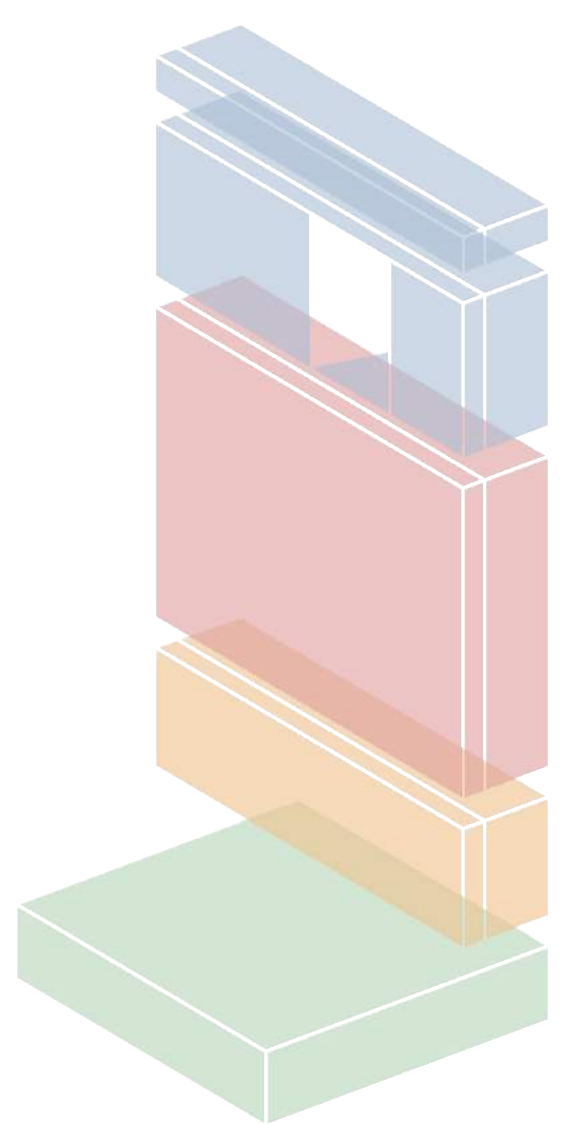
Transparence



Végétation



serres
galerie



- espaces publics
- espaces formation
- espaces recherche
- espaces communs



PROGRAMME

PLAN 3e



1:200

