

# LE VIVIER D'AUBERVILLIERS

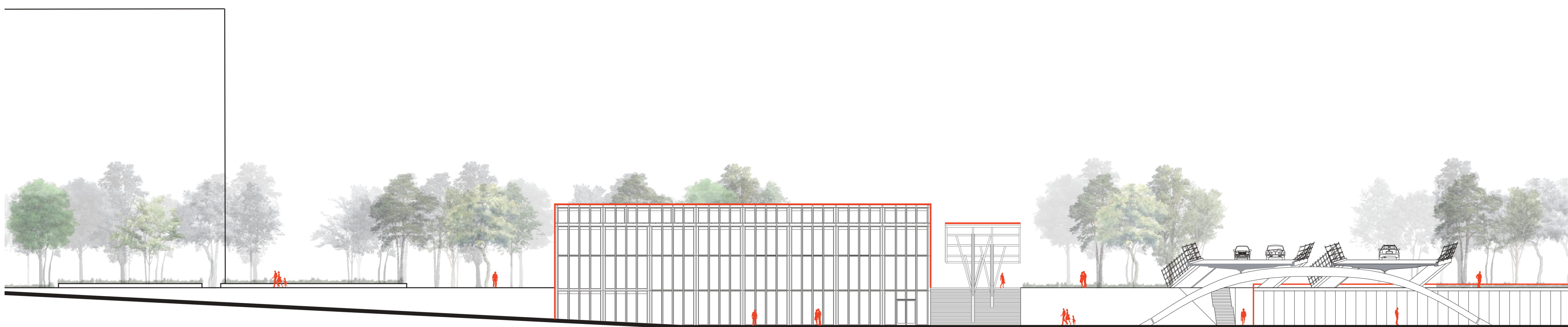
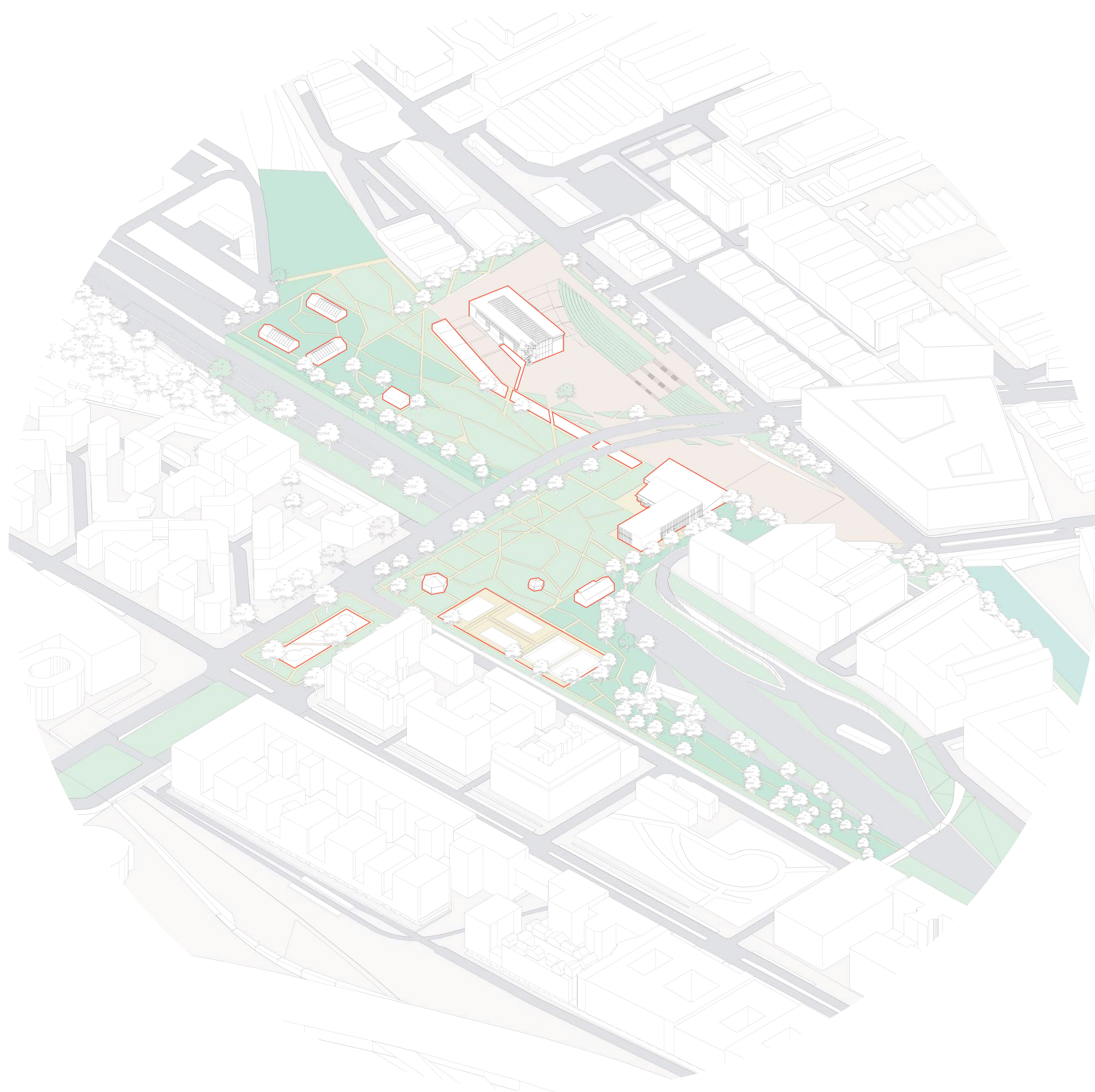


VUE DE LA MÉDIATHÈQUE DEPUIS LA PLACE



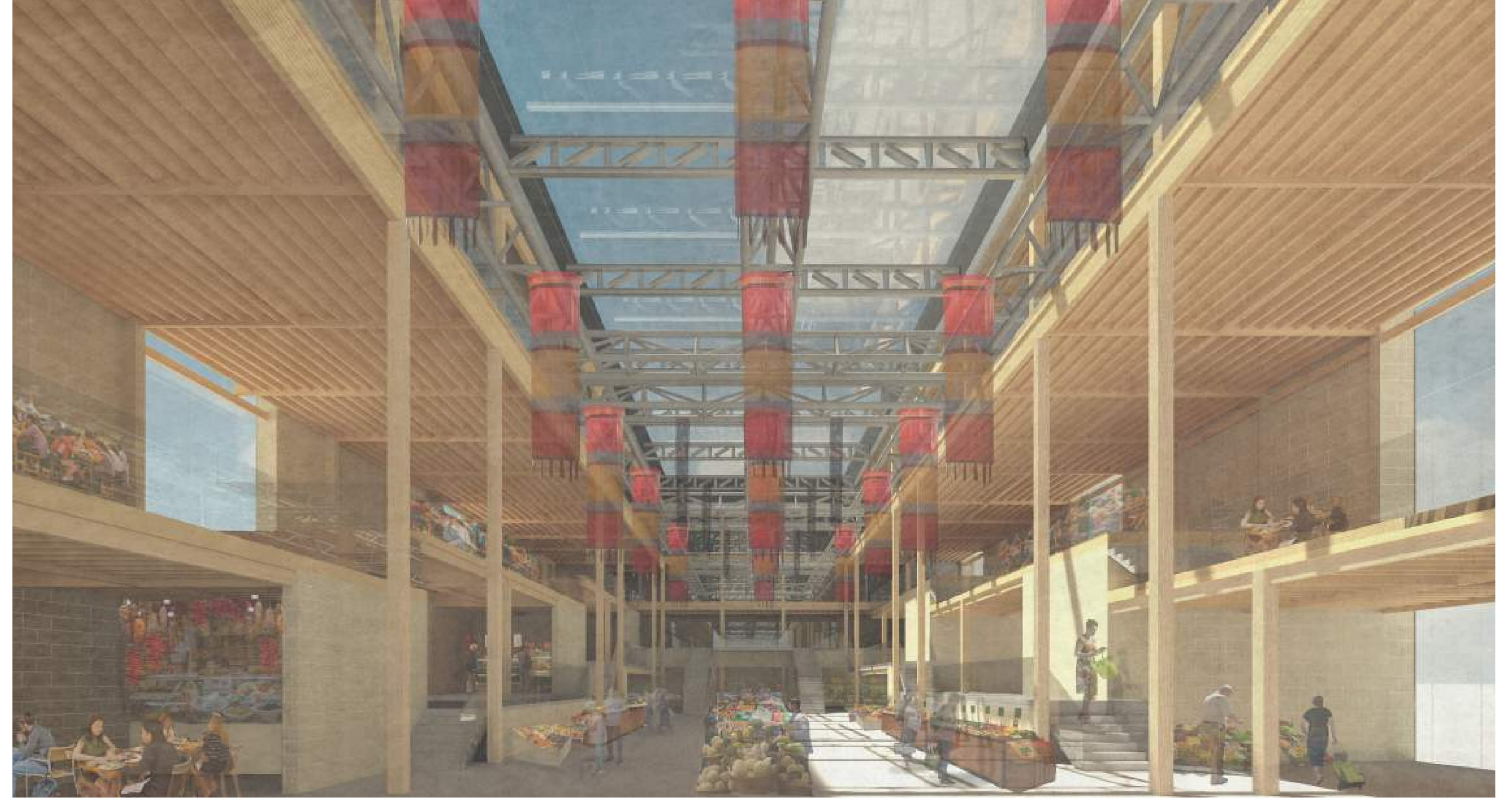
VUE DE LA MÉDIATHÈQUE DEPUIS LE PARC

## AXONOMÉTRIE PROGRAMMATIQUE

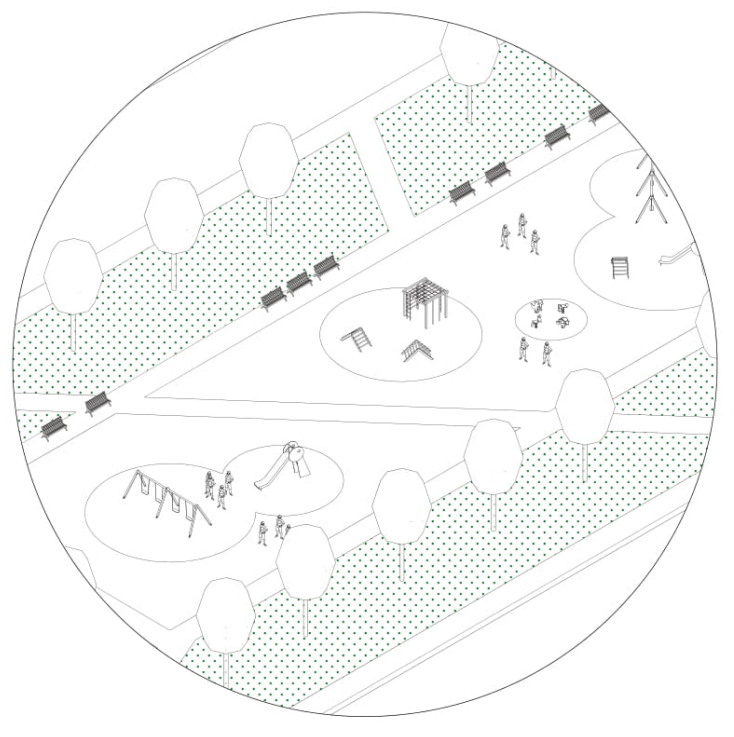




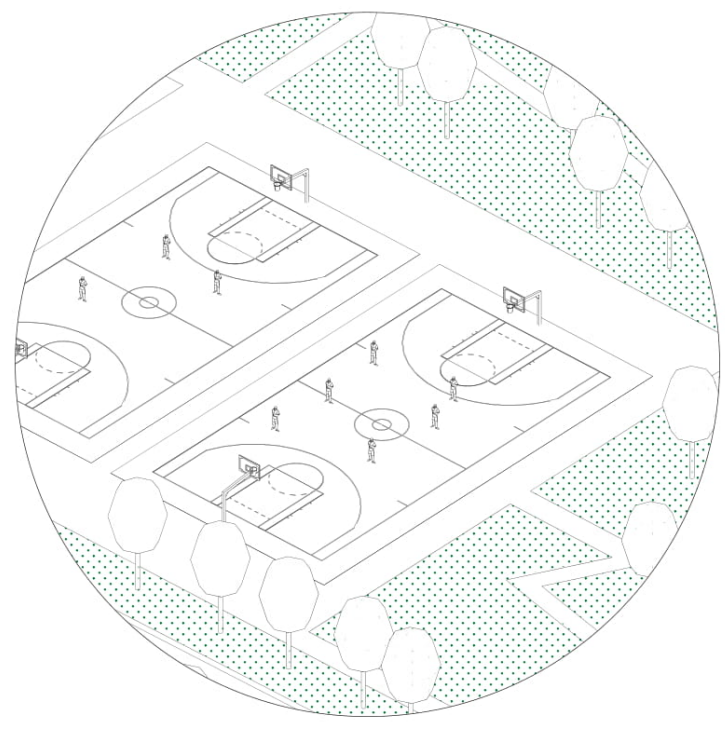
VUE DE LA HALLE DEPUIS LA PLACE



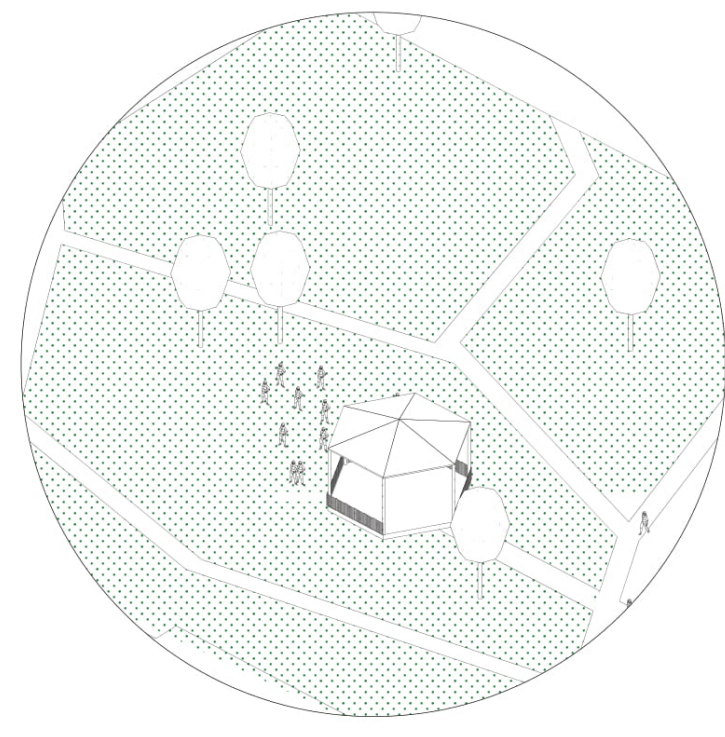
VUE INTÉRIEURE DE LA HALLE DE MARCHÉ



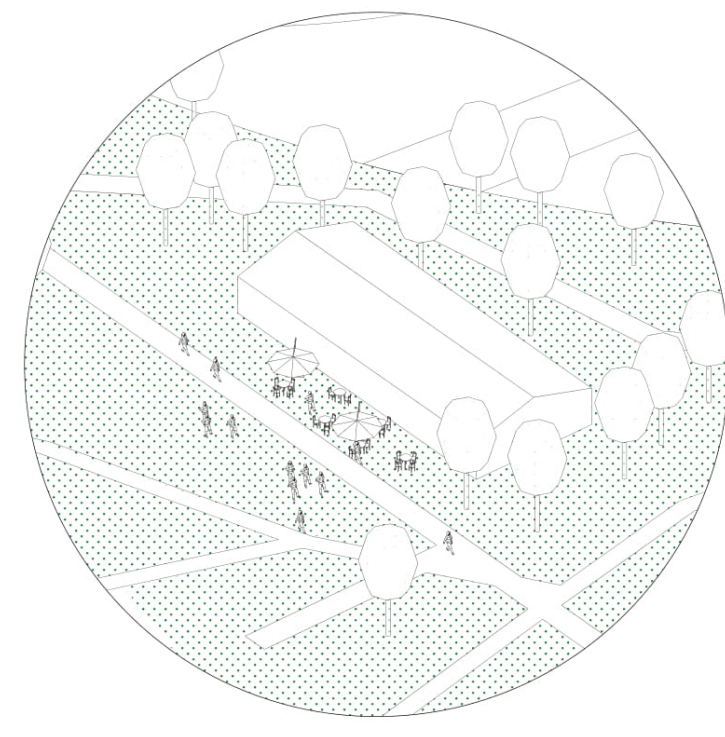
Jeux d'enfants



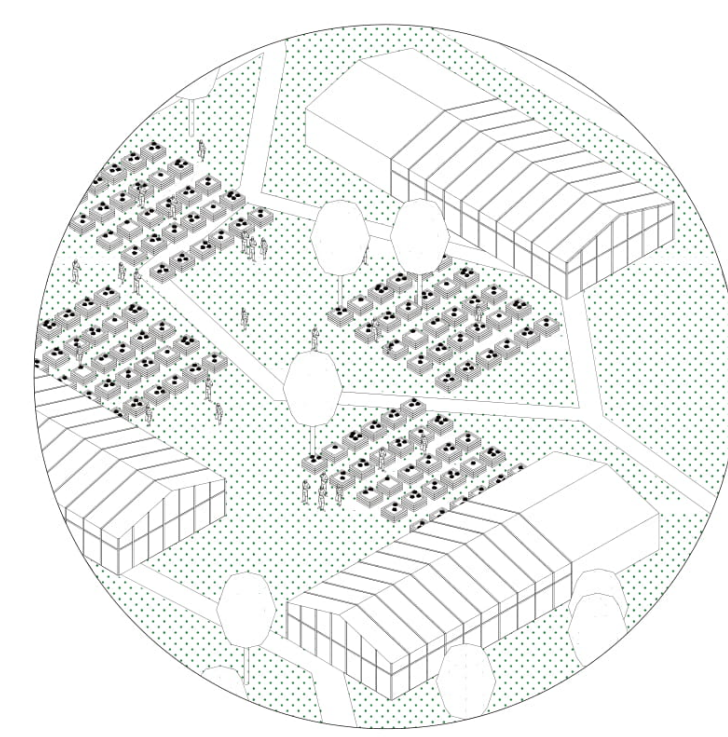
Terrains de sport



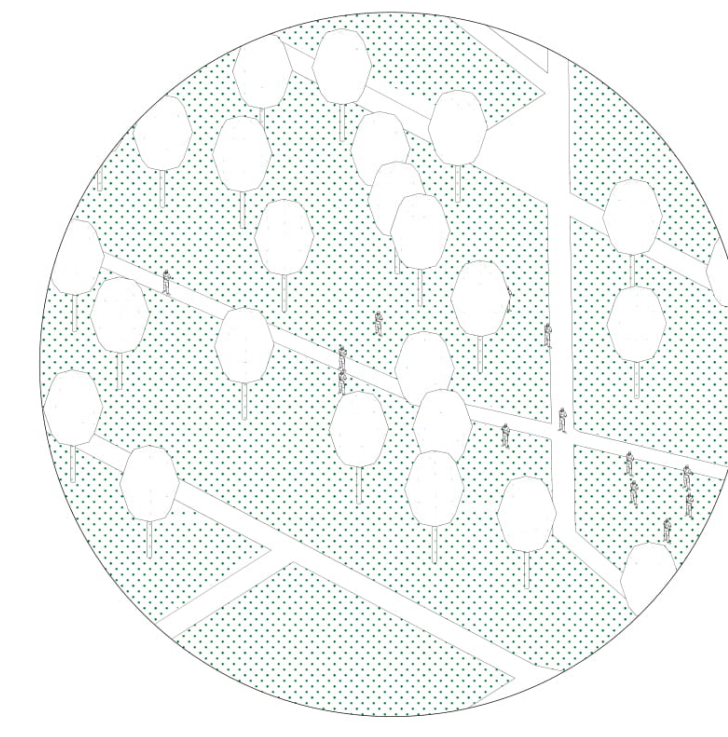
Kiosque à musique



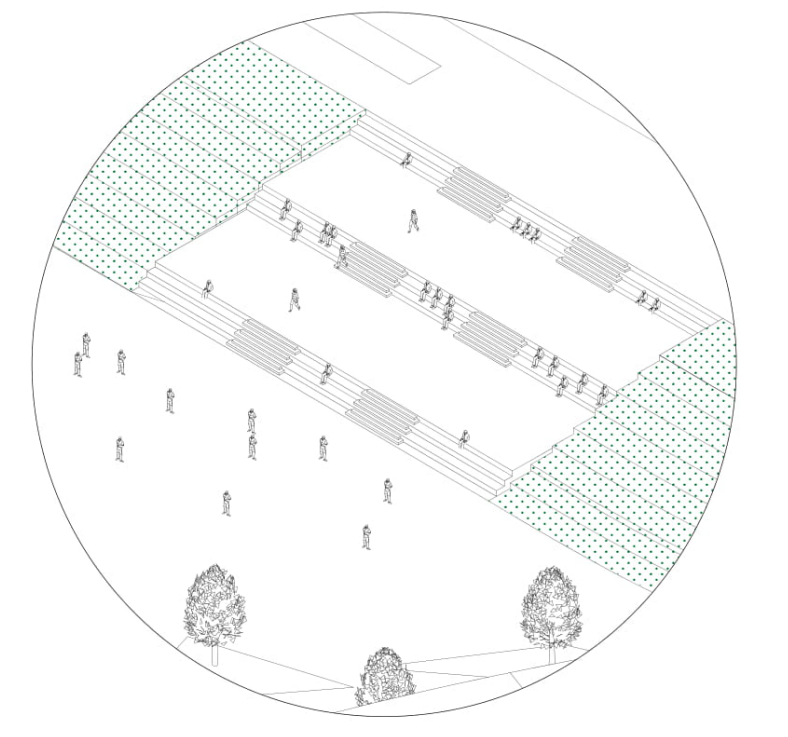
Guinguette



Serres agricoles



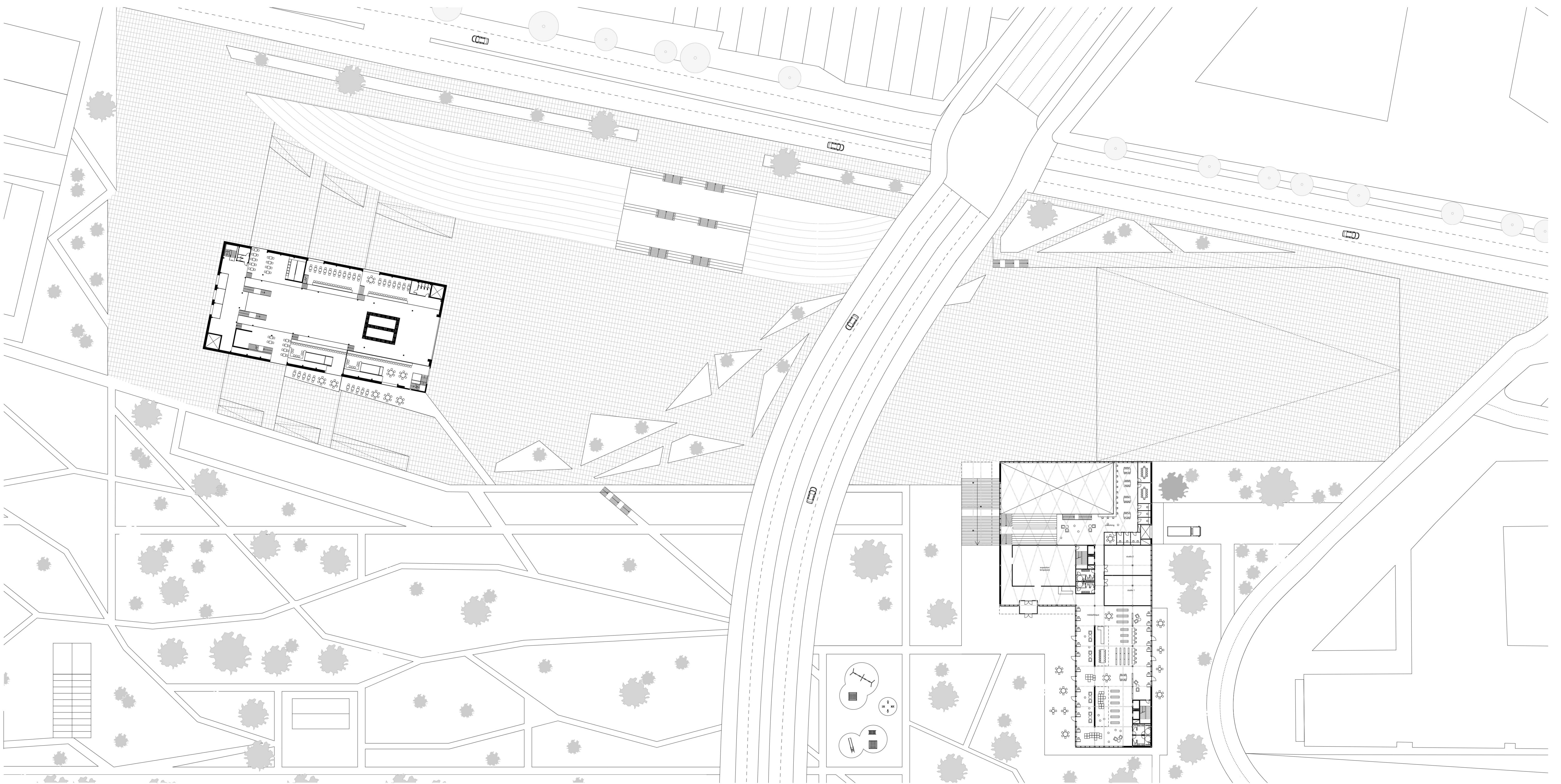
Arboretum



Gradins



PARCOURS VÉGÉTAL ET URBAIN



PLAN DE R+1  
1/500 ème

