



100% create by the students!



# Welcome at the architecture school Paris-Val de Seine !

SMALL GUIDE FROM THE STUDENT FEDERATION - ERASMUS





# Associations

**BDE** -the famous student office

@bde.ensapvs

The BDE, where to start... The BDE is an association of dynamic students motivated to help you enjoy your student life: By organising parties, festive events, cultural activities and trips, we can offer you lots of fun things to do together! Our members are always on hand to help you unwind and relax, and can answer any questions you may have at our HQ (on the 2nd floor opposite the coffee machine).



**Jaub** Young student, let's work

JAUB gives students opportunities to put into practice skills they have acquired during their studies. They will be able to work in an agency as part of their course. Therefore, any student at the School can join the association and be offered assignments or look for agency work themselves. This gives students the opportunity to gain professional experience and benefit from decent pay.



**Vert de Seine** -Think of our planet!

@vertdeseine

Vert de Seine is the first ecology association in this school, with the aim of raising awareness of a new architecture and new ways of thinking and living that are restorative and respectful of our environment. The challenge is also to make this action sustainable by giving time to new horizons, finding solutions, releasing creative energies, encouraging resilience and including future generations.



**Salobskur** -Film screenings at school? Sure!

@salobskur

Quite simply, we're a film association that organises two (quality) film screenings a week in an amphitheatre with great seats (after which we go to the bar). However, our main aim is to make short films under the impetus of students. Basically, we're an association of huge cracks (except for one).



**Aftercharrette** -The best mixes for your best parties!

@aftercharrette

AFTER CHARRETTE is the school's electro and techno association. It organises parties and other events for all. Whether we're talking about drinks or parties, we're here for one thing above all: TO PARTY and unwind after a performance. Throughout the year, we'll be putting on some great parties to get you thrill your sense.



**Coop** -Running out of something, come to the coop!

@coop.pvs

La Coop est une association étudiante à but non lucratif qui vend tout le matériel nécessaire aux études d'architecture, notamment pour les maquettes et le dessin, vendu à des prix très concurrentiels.



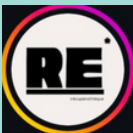
**Archi'pals** -For a better experience as a foreigner

@archipals\_pvs

ArchiPals is an association whose aim is to promote international mobility through various projects. It is made up of an events department offering cultural and recreational outings to help foreign students discover Paris, and to create a link between them, foreigners and ENSAPV5's students. Another centre serves as a point of reference for students on mobility programmes, whether French or international. It provides information on the different types of mobility and helps to circulate information.

recuperatheque\_ensapvs

Reuse and solidarity-based recycling. A desire to restore value to materials by giving them a second life. A desire to make these second-generation materials accessible to all.





## **FED** - Federation of associations & the masses

@fedensapvs

The FED is the association that creates links between the students, the administration and the masses (we'll explain what it is later)! We organise some really cool events (we've put together this little booklet, for example), and we also take care of our school student. Our goal is to make life in school easier and memorable.



## **D'ENSA** - Let's dance!

@densa\_pvs

The school's first dance association has just opened its doors in 2025! The aim of the association is to encourage students to take up dance, and to put on shows together based on a variety of styles and music. So if you're full of energy and want to have fun, join our Instagram to join us next year ;)



## **La Voûte**

@lavoutensapvs

La Voûte is an association that allows you to experiment and build to scale 1 in order to confront reality. Furthermore, the buildings are made using all kinds of materials, mainly recycled ones. Workshops are held throughout the year.



## **AM** - Like to play an instrument, then it's the perfect association for you!

@amensapvs

The aim of the Association Musique is to create a new dynamic of musical exchange, transmission and sharing. The association offers instrumental learning and improvement workshops open to student members, enabling them to acquire basic or advanced skills in several musical disciplines (music theory, guitar, piano or drums) at the school. Rehearsal and creative equipment is available: instruments, amplifiers, fixed M.A.O. workstations, microphones and sound systems, etc.



## **AS** Many sports for the great sportman or sportwoman that you're!

@asensapvs

The goal of this association is to organise and develop practice of sport as part of studies, both as a leisure activity and in competition. The school is represented in university championships by its team and individual sports teams. Moreover, it enables young sportsmen and women who are already practising a discipline at a high level to follow architectural training without disrupting the rhythm of training necessary to practise their sport properly.



## **À Pied d'Oeuvre** -- Come and learn directly from the field!

@apo.ensapvs

Our goal is to put people with humanitarian or charitable projects in touch with students and their teachers, or with young graduates who want to get involved in building projects and use their discipline to help develop or perpetuate local building cultures.



## **La Palette** - Our favorite cafet' (chocolat bread between two lectures)!

@la\_palette\_ensapvs

La Palette is the student cafeteria within the school. It offers a range of dishes, snacks and drinks to please as many people as possible, thus, students can eat at any time of the day at a reasonable price. It is a convivial place where students can get together to work or relax.



## **Grand Angle Studio**

@grandanglestudio

The Grand Angle Studio photo association wants to provide a creative space dedicated to photography and all kind of visual arts. The aim is to encourage the development of creative, collective photographic and artistic projects. The programme includes photo outings, exhibitions at the School, competitions and conferences.

# The Workshops

The School is made up of 14 workshops into which all the students in each year are divided. Each workshop has its own teaching methods and way of working, which is what makes our school so particular and interesting

## Masses

The masse is a delegate who is responsible for student life, cleanliness and activities/events in his or her workshop. Students can contribute by paying the masse.

Let's begin the second floor tour!



**G11**

These two workshops have the particularity of presenting different teaching methods over the years, which will be specific to each teacher, creating a wealth of teaching and knowledge.



**G12**

What's more, because of their small size, the members of G11 and G12 are even more closely knit and motivated thanks to their mutual support and solidarity!



## Up to the 3 floor!

### G5

G5 is a studio that grew out of the "École des Beaux-Arts", and its teaching methods are based on the artistic and conceptual side of architecture. Students are invited to come up with a concept, a guiding idea, which should be developed as far as possible as part of the project. The teaching also encourages students to find their own character as designer-artists, with the emphasis on experimentation and the quality of the means of representation (technical documents, models, sketches, perspectives, etc.). We'll be in Room 306 to talk to you and answer your questions!

### G7

From a teaching point of view, the G7 is not based on any particular doctrine or pedagogy. It's quite open. Thus, for many years, L1s have been trained by varying the scale and programme of the projects they work on. Developing a strong idea that determines and articulates the development of the project is fundamental. Students are also trained in representation and design techniques, both by hand and using computers.

The workshop, in room 301, is a place that brings together and welcomes all those who wish to work and spend time there, whether or not they are enrolled at G7.

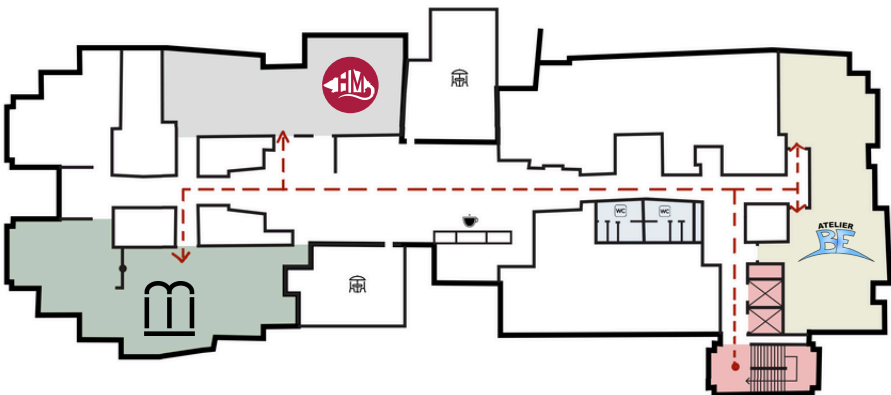
### G10

G10 was born out of the merger of two workshops (H and M)!

The workshop leaders organise various events throughout the year to bring together all the members from L1 to M2 and even some graduates.

The room allocated to the workshop is 305. It's a place where students like to get together to work, exchange ideas and receive advice on their projects, particularly from older students.

The workshop is like a big family where everyone can contribute their ideas, experience and, above all, good humour to make your studies a real adventure!



# Jumping to the 4 floor !

**G4**



The teaching at G4 pays particular attention to the representation and use. In the first year, students are introduced to architecture through the practice of hand-drawing and design, and the use of models in the project process. In order to acquire an architectural culture as early as the first year of the degree course, reference analysis reports accompany the project reports until the third year. The aim is to make students aware of the concepts of spatial qualities, use, pathways and dimensioning, rather than instilling in them a formal approach to architecture. One of the major challenges at G4 is to ensure mutual support and intergenerational links between the different classes in the studio.

**G8**



The G8 is one of three workshops whose architectural teaching is called ALTO (Architecture-Laboratoire des Territoires Ouverts).

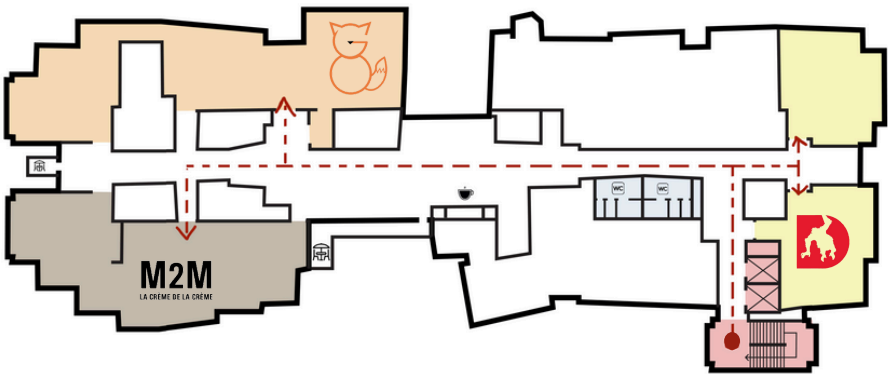
Theoretical project practice is at the heart of the teaching. Experimentation is the key word. This practice is based on a knowledge of the living environment and related social practices. It approach allows each student to reason and experiment freely. A good atmosphere and mutual support reign supreme in the workshop :) We look forward to seeing you in 405!

**G9**



G9 brings together the skills needed to develop a project using a global approach: the teaching is centred on the architectural design process with an experimental vision. This allows us to test new concepts, techniques, thinking and modes of representation. We start in L1 with in-depth computer training, with a particular focus on the notion of scale.

In addition to its teaching, G9 is unique in that it is small, being divided into two rooms with two different atmospheres. The space lost by the separation is regularly used as a convivial dining room.



## Upper to the 5th floor?

### G1

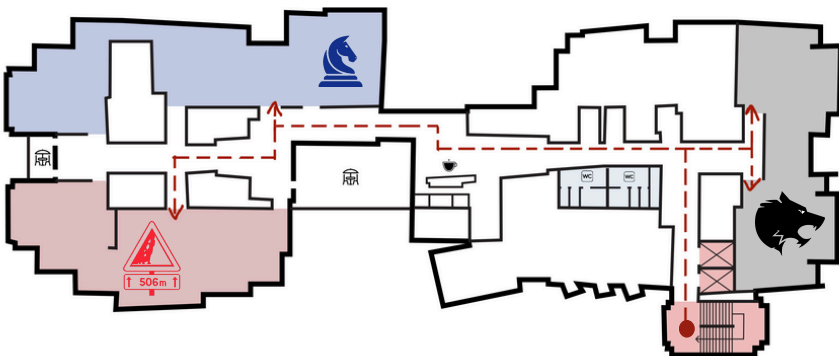
Le G1 est un groupe de projet où l'enseignement s'appuie principalement sur des outils numériques, où l'expérimentation et la recherche d'idées nouvelles y sont très importantes. Depuis la conception du projet jusqu'à la réalisation de la maquette, les étudiants sont encouragés à tester leurs hypothèses, innover, expérimenter, découvrir, dans le but de créer une architecture contemporaine riche. La création de maquettes en argile, en plâtre ou même en métal passant par la soudure, montre cet intérêt pour l'expérience mais aussi du contact avec les matériaux. Grâce au Fablab, les étudiants de première année ont pu créer un projet qui utilise les dernières technologies : la réalité virtuelle. Si vous voulez en savoir plus, venez en 505 pour discuter avec nous !

### G3

Au G3, on aborde l'architecture à travers une analyse de site importante, les conditions écologiques et l'expérimentation. Au G3, on invite aussi le numérique et les nouvelles technologies (VR, Impression 3D) tout au long des projets. Notre pédagogie permet de créer des solutions urbaines, paysagères et architecturales durables et qui répondent aux questions environnementales et sociales de demain. On t'invite à venir nous voir en 501, découvrir les projets qu'on a fait cette année et d'autres surprises !

### G6

Aucun courant architectural n'est fondamentalement mit en avant au sein du groupe 6. Une certaine liberté est laissée à l'étudiant.e quand à son orientation architecturale. Cependant, si une doctrine est belle est bien présente à l'atelier, c'est celle de la mise en oeuvre. Par conséquent, une attention toute particulière est accordée à la matérialité et aux détails architecturaux, développant l'idée que l'architecture est affaire de construction et non pas seulement de conception. On t'invite à venir nous voir en 506 pour en découvrir plus sur nous !



## Almost there, but now the 6th floor!!

### G2

LG2 is an arts workshop. Hand-drawing is essential: it's the origin of the project. You will inevitably go through the 'representation' stage. Conceptualising is one thing, but representing it is quite another. Knowing how to handle it will help you go further in your intentions: and that's vital! Finally, because knowledge is at the root of everything, it relies heavily on analyses of remarkable architectures: you'll be surprised to discover just how much you too can do with the same keys in your hands!

### G13

G13 is one of three workshops whose architectural teaching is called ALTO (Architecture-Laboratoire des Territoires Ouverts). This means that the teaching of projects is based on the theoretical practice of architecture. The issues revolve around open space, the contribution of light and the place of the body in space. Rigour and the search for the ideal space are the watchwords of this workshop. The atmosphere in the workshop is dynamic and supportive, and the students who are members are encouraged to help each other. You'll be very welcome, and we can't wait to meet you!

### G14

The G14 is a workshop whose general teaching style is hard to describe, so varied are the lessons from one semester to the next! In the first year, there is a different teacher for each semester, with two very different visions of the project... Currently in the midst of an internal restructuring with the departure of some teachers, a brand new G14 awaits you next year! We invite you to join us in 601 to observe our work and ask any questions you may have!

